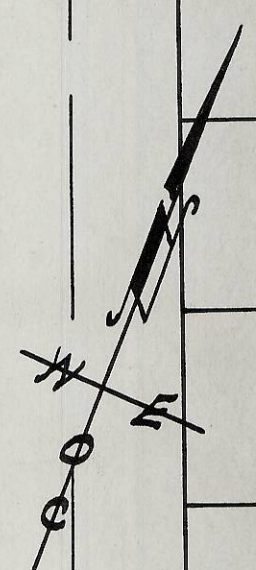
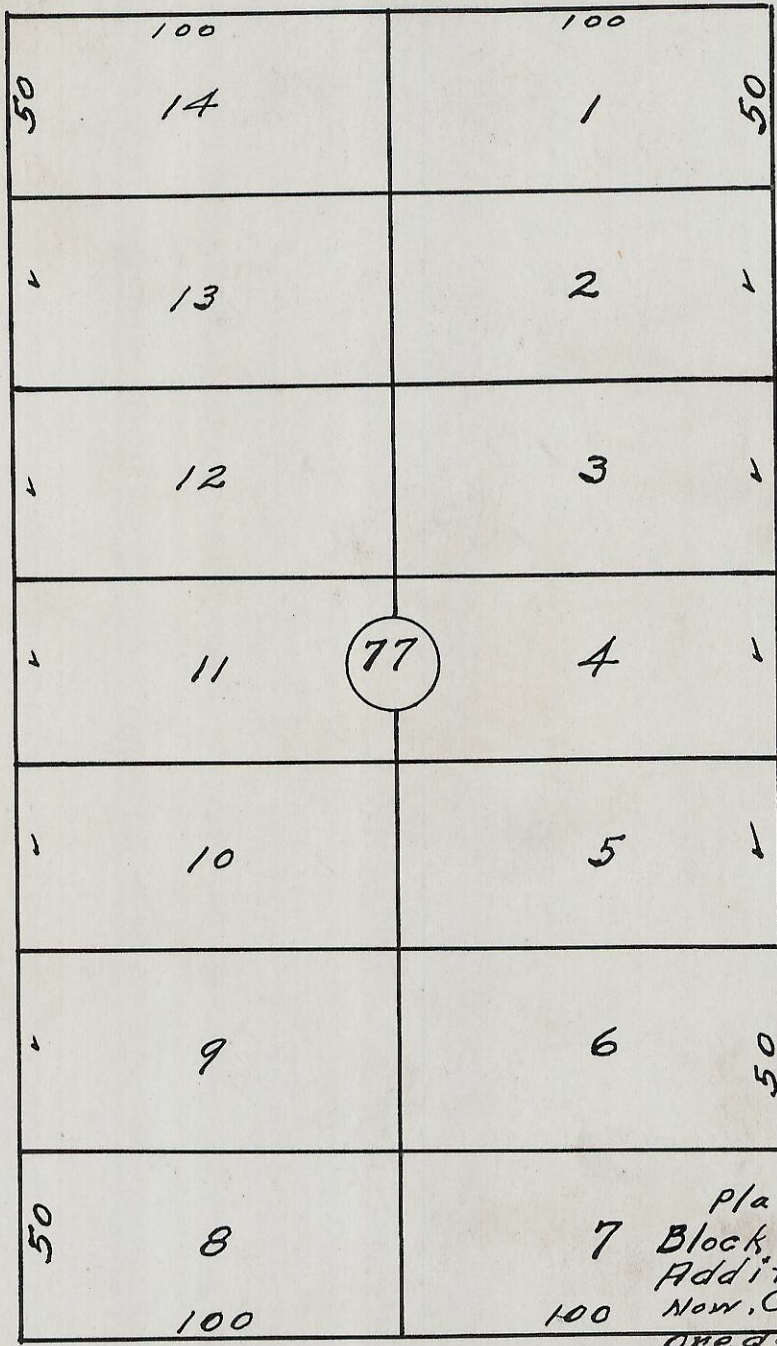


60 S.W. Emigrant Ave. 60



plat showing
 7 Block 77 of Reservation
 Addition to the town,
 Now, City of Pendleton,
 Oregon -
 surveyed, staked & platted,
 March 1950 By W.E.O. Criger.
 Scale: 1" = 50'

REGISTERED PROFESSIONAL
 ENGINEER
 1497
 W.E. Criger
 OREGON
 MAR. 9, 1931
 W. E. O. CRIGER

S.W. Frazier Ave.

Rec'd 2/21/13
 D. Tolant
 13-115-Ax

2N 32 10 AD

Hutchinson