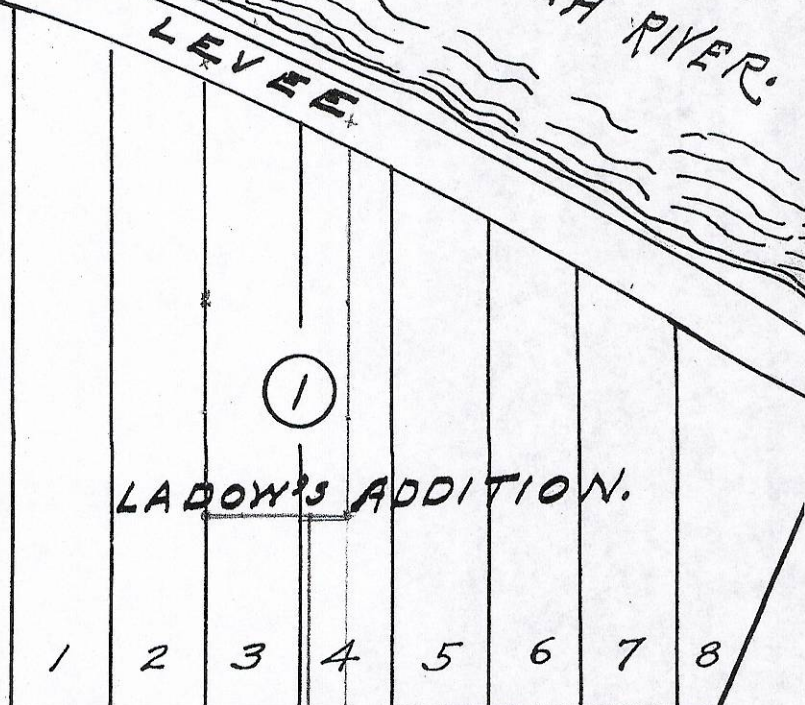
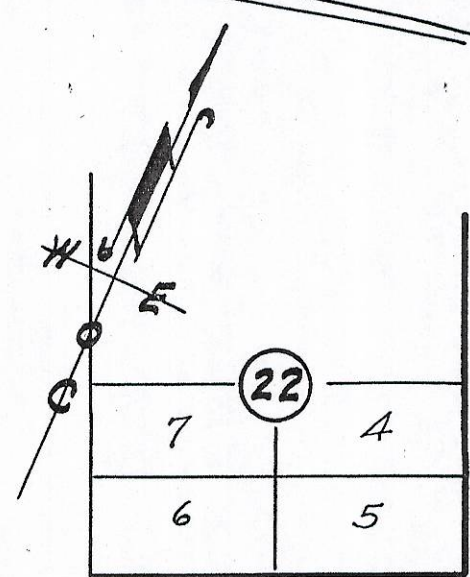


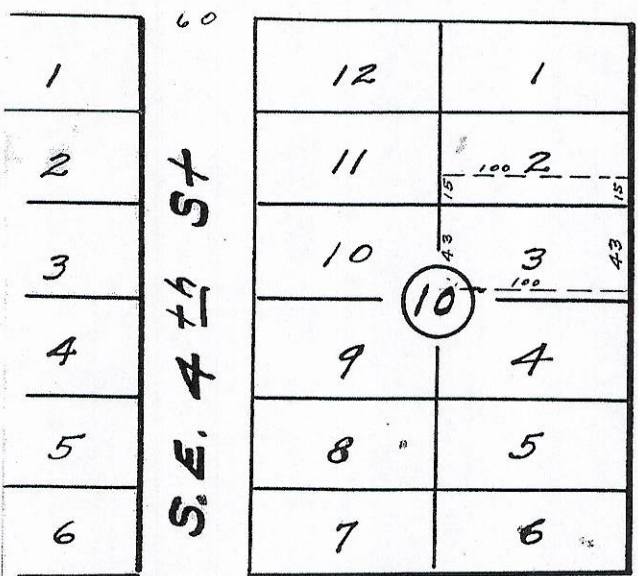
UMATILLA RIVER

LEVEE

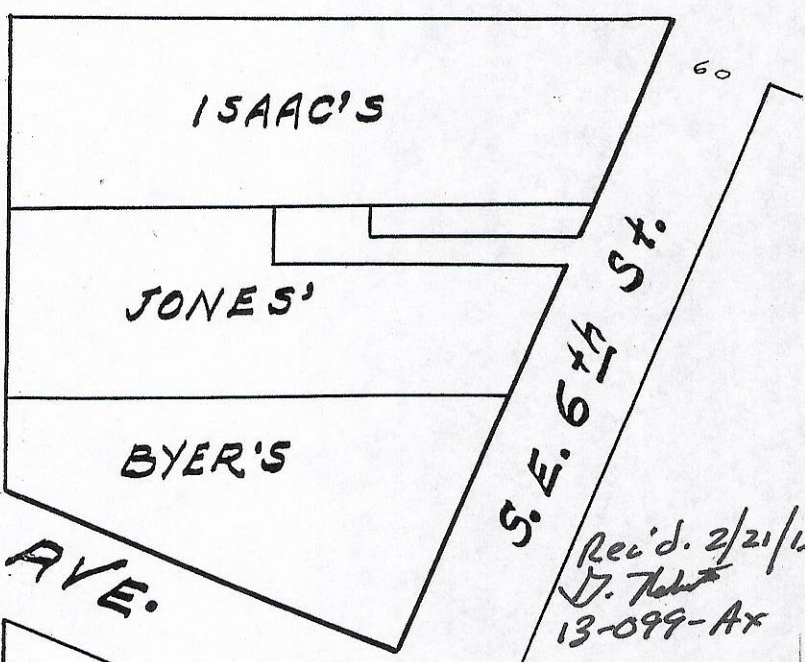


LADON'S ADDITION.

S. E. BYERS AVE.



S. E. 5th St.



S. E. COURT

AVE.

Rec'd. 2/21/13  
D. T. T. T.  
13-099-Ax

COURT HOUSE

REGISTERED PROFESSIONAL ENGINEER 1497 (12)

W. E. O. CRIGER

OREGON

MAR. 8, 1931

W. E. O. CRIGER

Plat Showing  
a Portion of the Original  
Town of Pendleton, Oregon.  
Ladon's Addition, and other  
ownerships.  
Scale: 1 inch = 100 Feet.  
surveyed and Platted Oct. 1947  
By W. E. O. Criger, Ore. Reg. C. E. No. 1497.

2N 32 02C