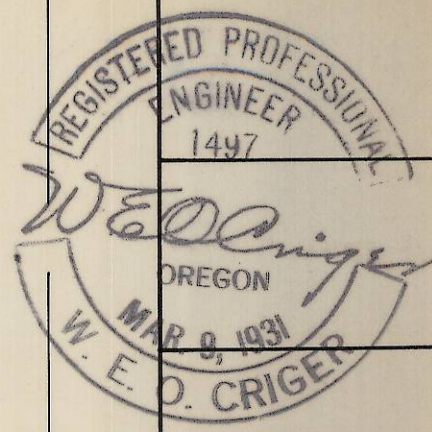
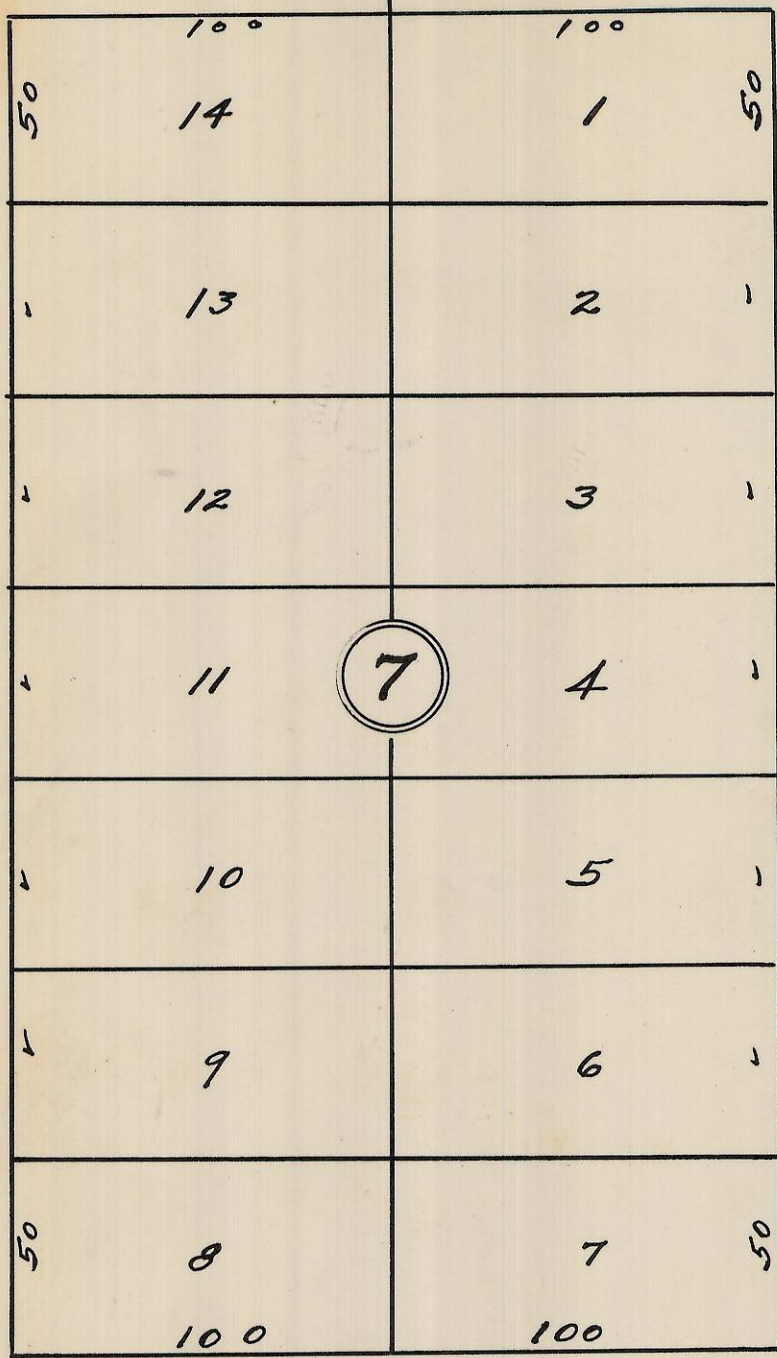


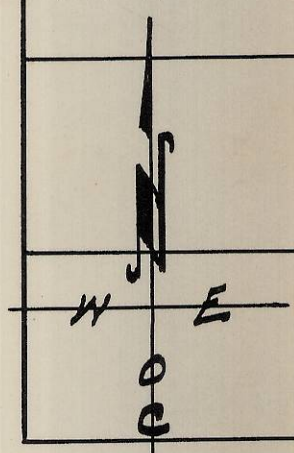
S.E. Byers Ave.

S.E. 9th N. 0° 47' W Drive



Plat showing
 Block 7 of
 Reservation Add.
 to City of Pendleton
 Oregon.
 Surveyed, staked and
 Platted - Oct. 1949.
 By W. E. O. Criger
 Scale: 1" = 50'

S.E. 10th St.



S.E. Court Ave.

Rec'd. 2/21/13
 D. Tolbert
 13-088-A7

2N 32 W BA