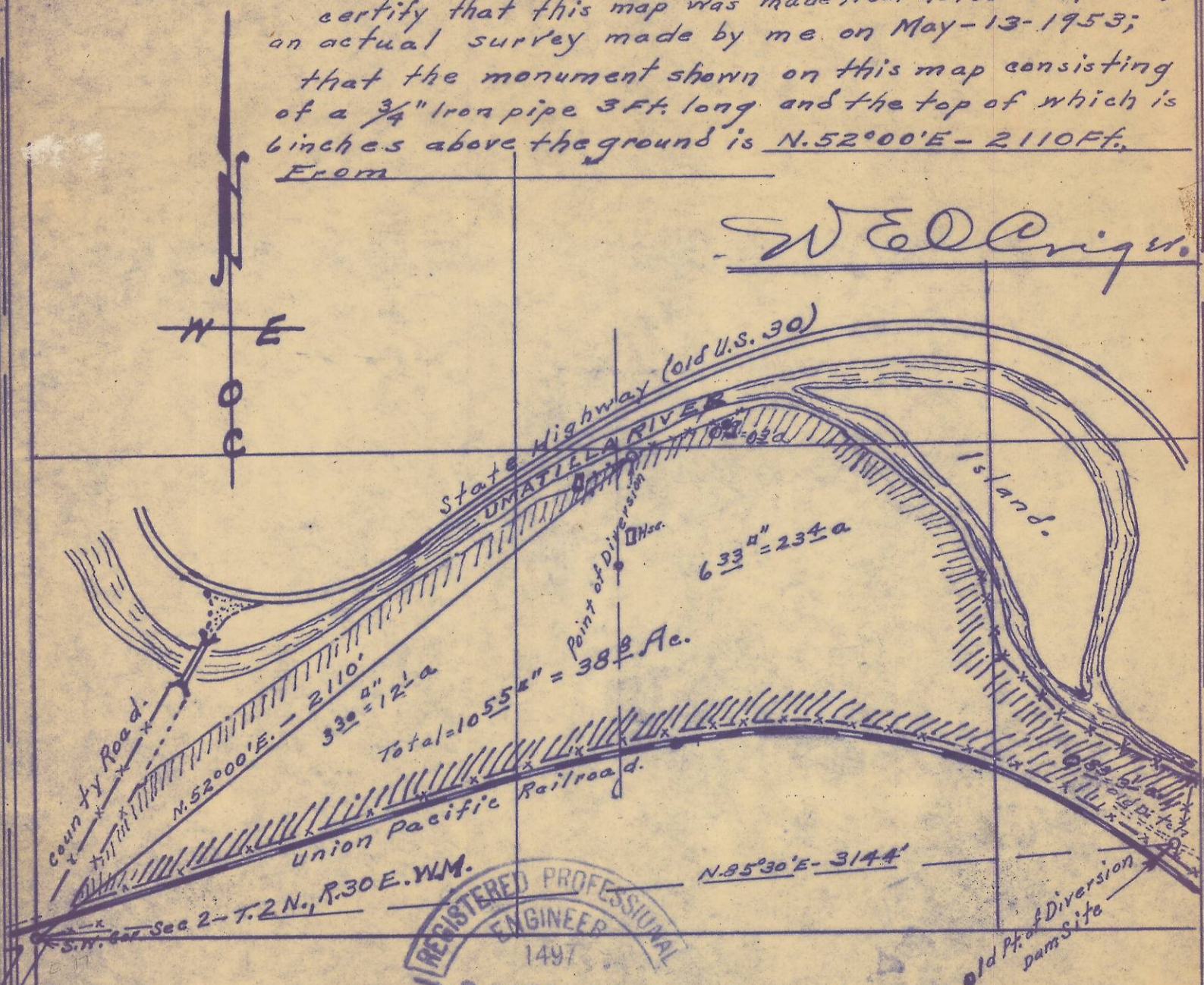


me

Plat showing part of
Sec. 2 T.2 N. R. 30 E. W. M. Owned & operated by
Clint Lewis - Pendleton, Ore.
Surreyed, staked & platted May - 1953 -
By W. E. O. Criger - Scale: 1" = 400' Const = 1.0" = 3 1/2 a.

I, W. E. O. Criger of Pendleton, Oregon do hereby
certify that this map was made from notes taken during
an actual survey made by me on May - 13 - 1953;
that the monument shown on this map consisting
of a 3/4" Iron pipe 3 Ft. long and the top of which is
6 inches above the ground is N. 52° 00' E - 2110 Ft.
From

W. E. O. Criger



REGISTERED PROFESSIONAL
ENGINEER
1497
W. E. O. Criger
OREGON
MAR. 9, 1991
W. E. O. CRIGER

Received by
Umatilla County Surveyor
Date: 2/6/2013
Rec'd by: S. Rex
No.: 13-025-AX

T2N R27-30 Ph. 397/ or 134

⑤