

5.89°58'W

80.78 ch. =

5331.5 Ft.

stone
4'x8'x12"

Dec. 19°45'

stake
stake

stake

stake

stake

stake

26662.

1333°

1320

stake

stone
stake

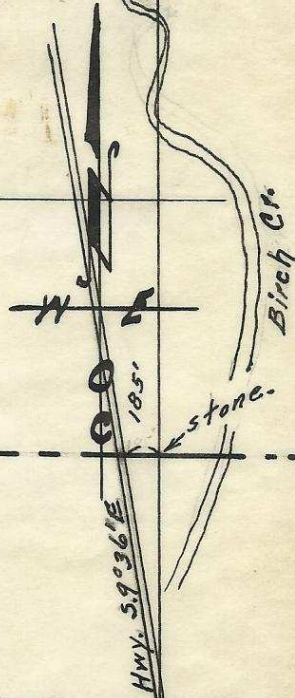
stake

106

15

2640

pine - (Found)
P.N. 12°30'E.
157 lks = 103.62 Ft.
stone 6'x8'x14"
Not Found.



21

22

Map showing
Parts of Secs. 15, 16, 21 & 22, T. 2 S., R. 33 E. W.M.
Platted Apr. 1950
By W. E. O. Criger.

Scale: 1 inch = 1000 Ft.

06367 Ar