

S.W. Emigrant Ave.

60

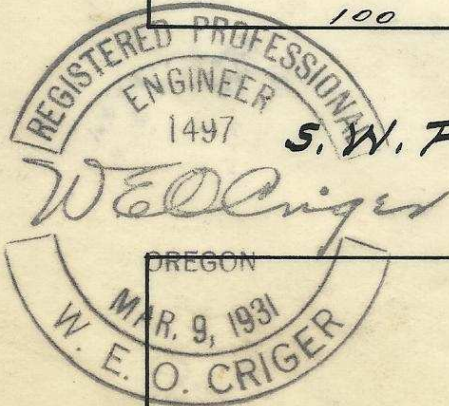
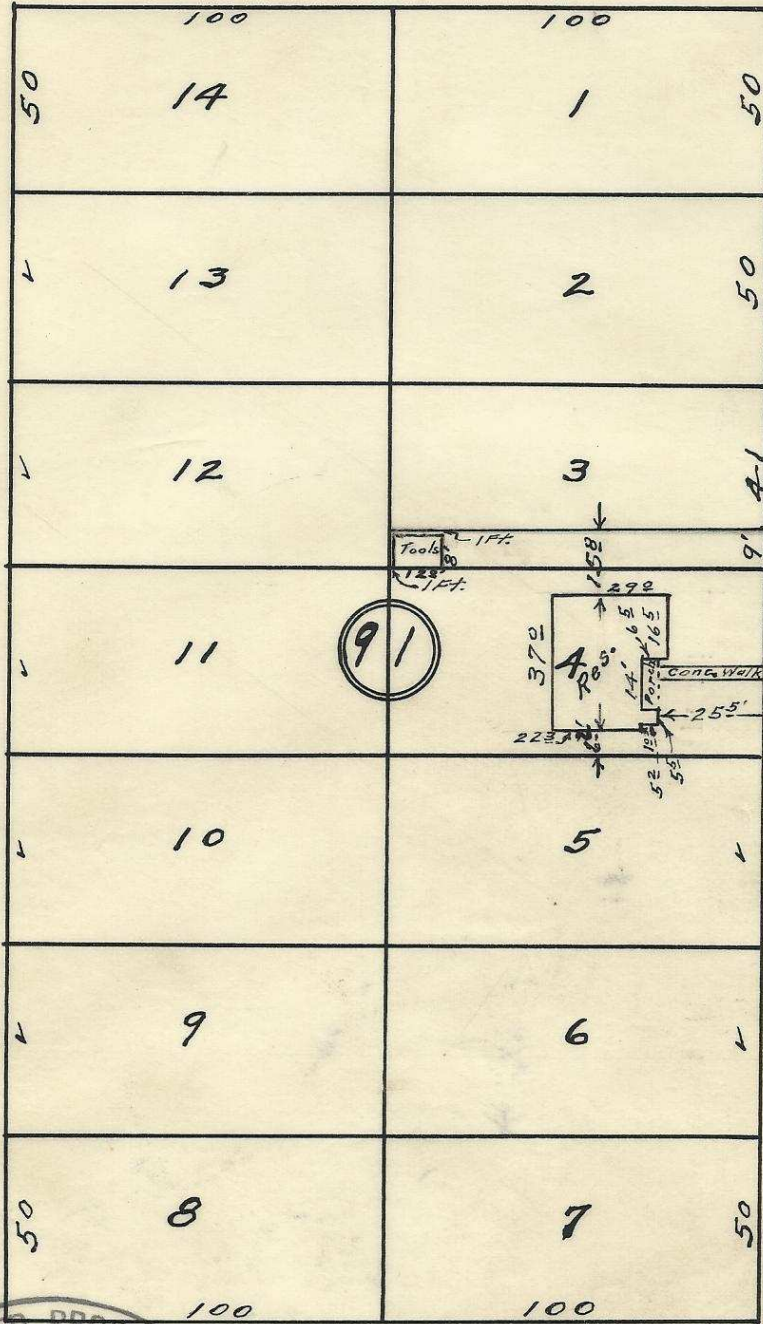
60

60

60

S.W. 19th St.

S.W. 18th St.



S.W. Frazier Ave.

plat showing Block 91 of Reservation  
 Addition to the town, now City of  
 Pendleton, Umatilla County, Oregon.  
 Surveyed, staked and platted - Oct. 1949.  
 By W. E. O. Criger  
 50 Feet

Scale: 1 inch = 50 Feet  
 2032 10CB  
 Ph. 2534 06-363-A8 (5)

George Brandt

2