

60

60

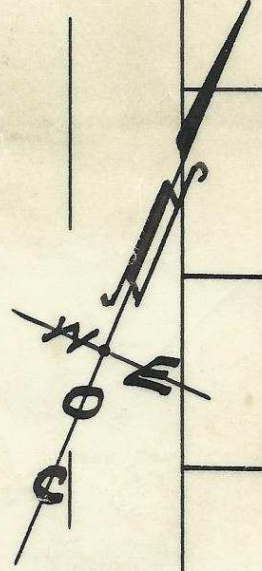
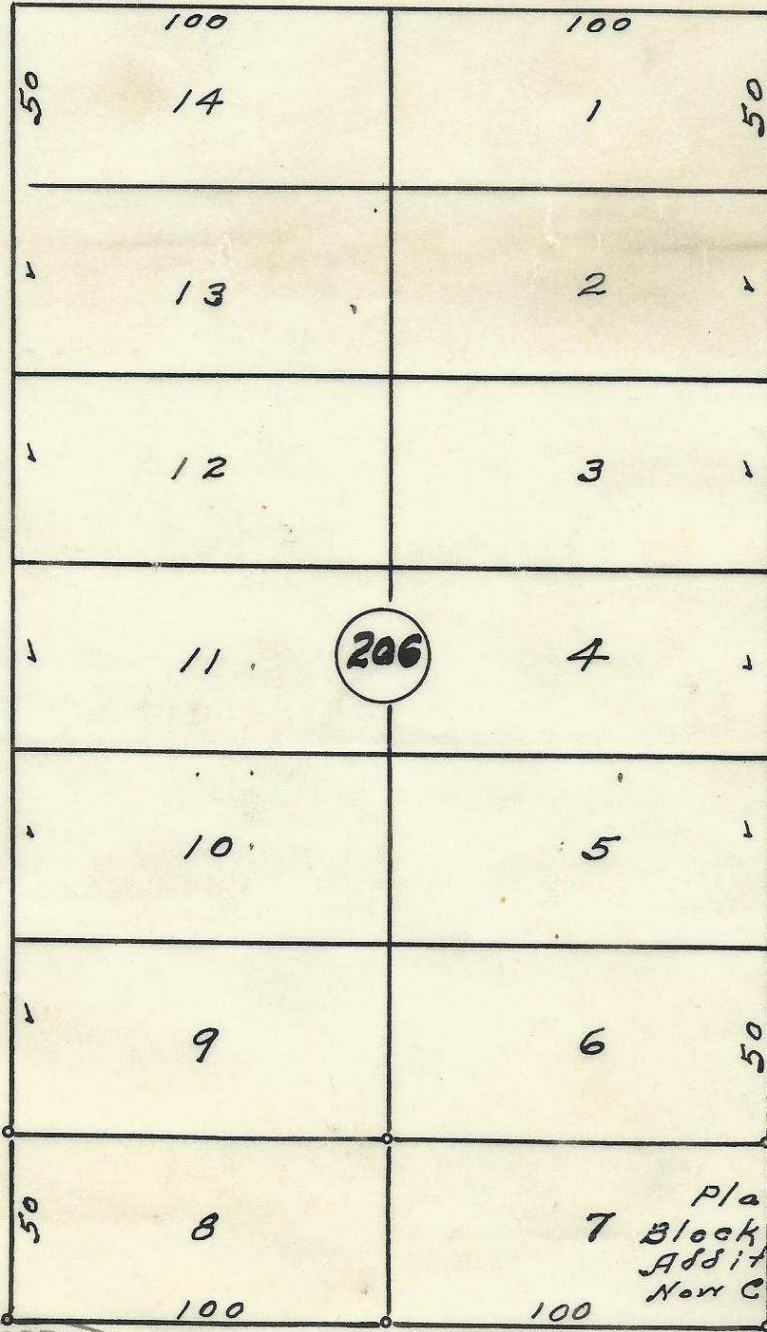
60

60

S. W. Hailey Ave

S. W. 19th St.

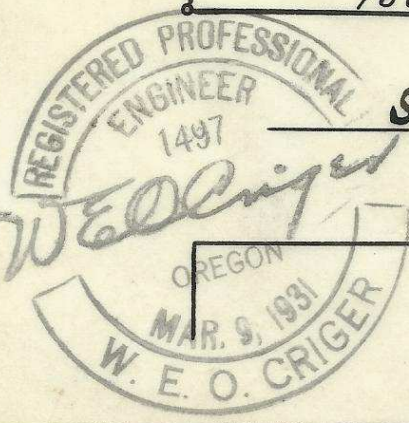
S. W. 18th St.



Plat showing
 7 Block 206 of Reservation
 Addition to the town,
 New City of Pendleton, Ore.

surveyed, staked & platted
 By - W. E. O. Criger.
 Scale: 1 inch = 50 Feet.

S. W. Isaac Ave.



2032 10 CD

06-362-Ax

6