

60

60

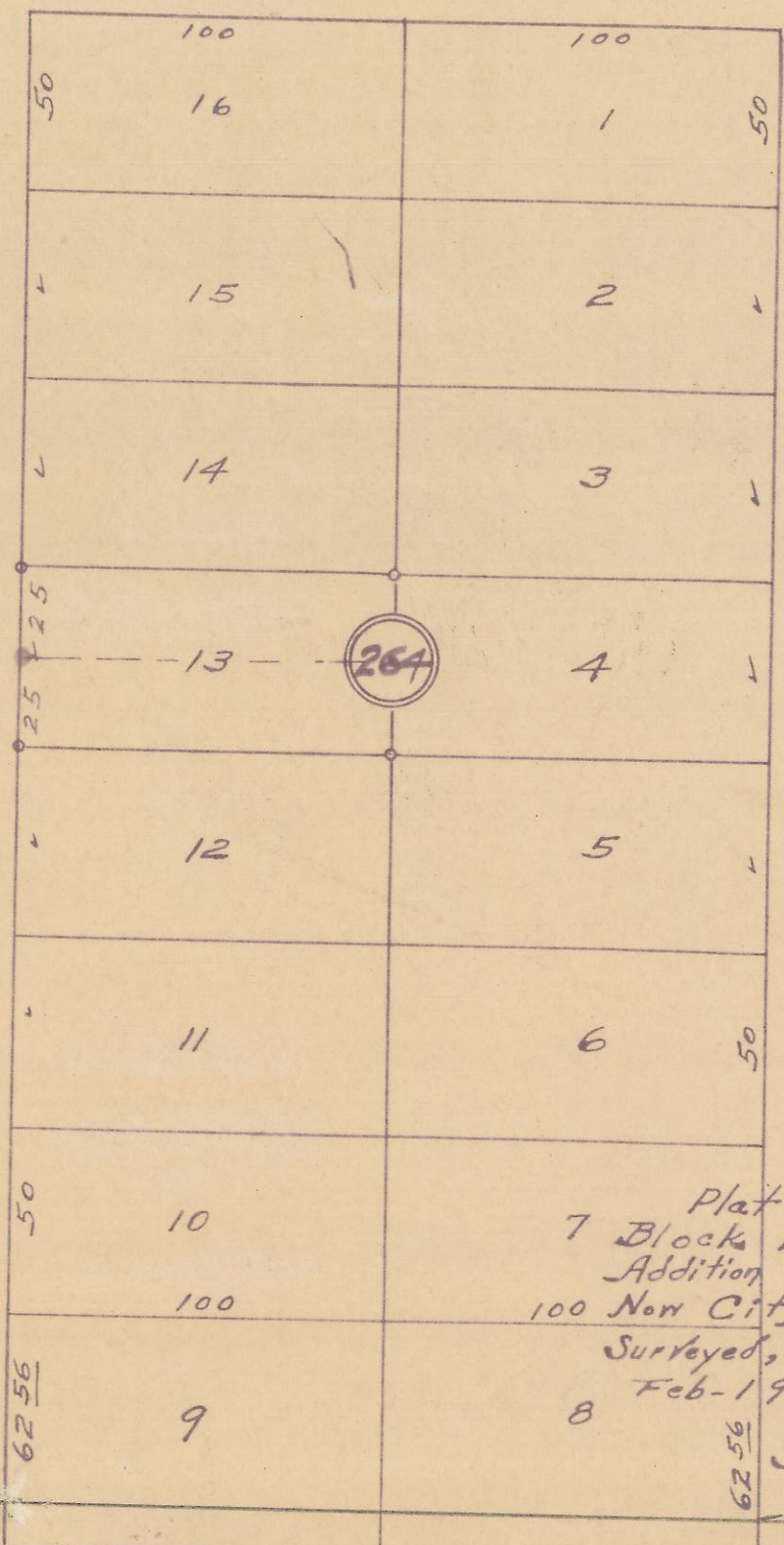
60

60

S.E. Isaac Ave.

S.E. 1st St.

S.E. 2nd St.



Plat Showing
 7 Blocks 264 of Reservation
 Addition to the town
 100 New City of Pendleton, Ore.
 Surveyed, staked & platted,
 8 Feb-1952-By W.E.O. Criger.
 Scale: 1" = 50'

South Boundary of Reservation Addition.

06-361-Ax