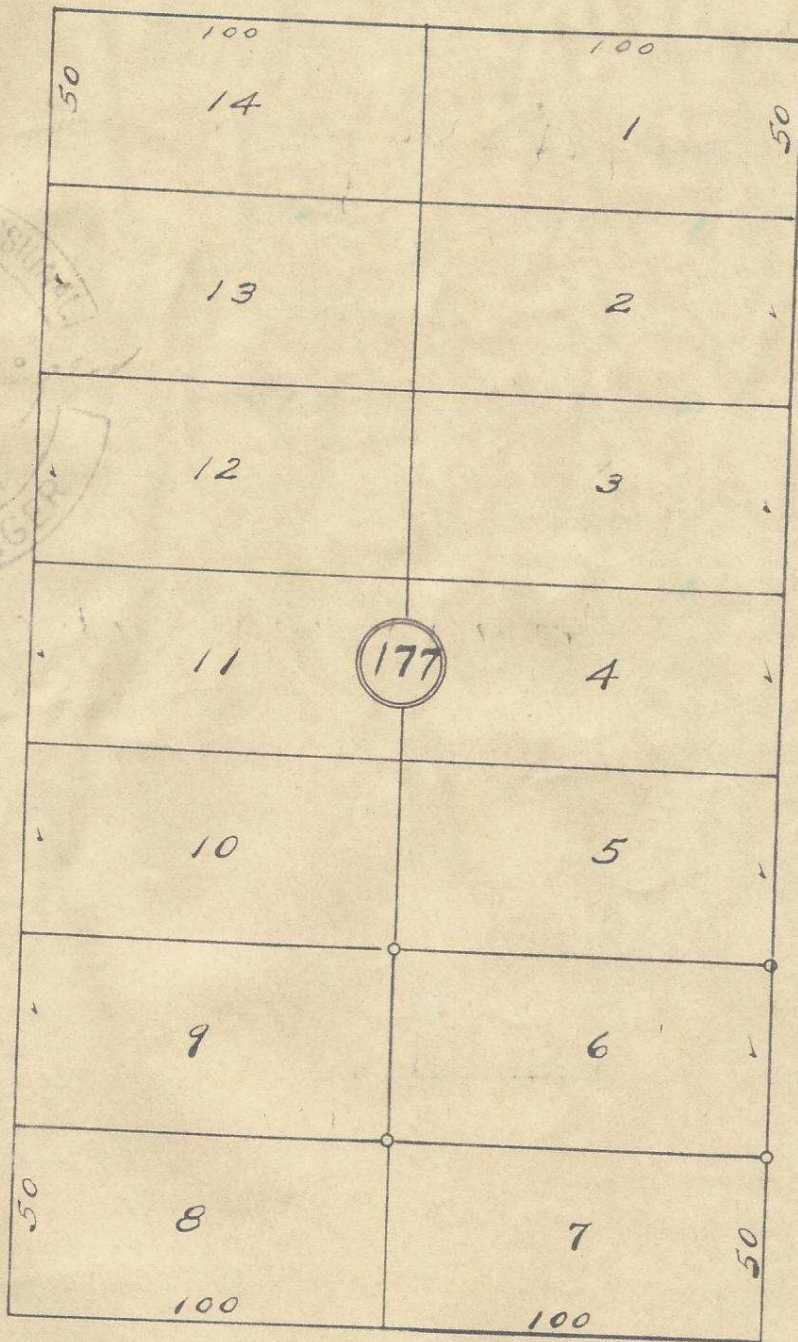


S.E. Goodwin Ave.



S.E. 3rd St.

S.E. 4th St.

S.E. Hailey Ave.

Plat Showing
 Block 177 of Reservation Addition
 to the Town, New City of Pendleton, Oregon.
 Surveyed, staked & platted Jan-1953-
 By W. E. O. Criger.

06-360-Ax Scale 1" = 50'

203211BD

4

