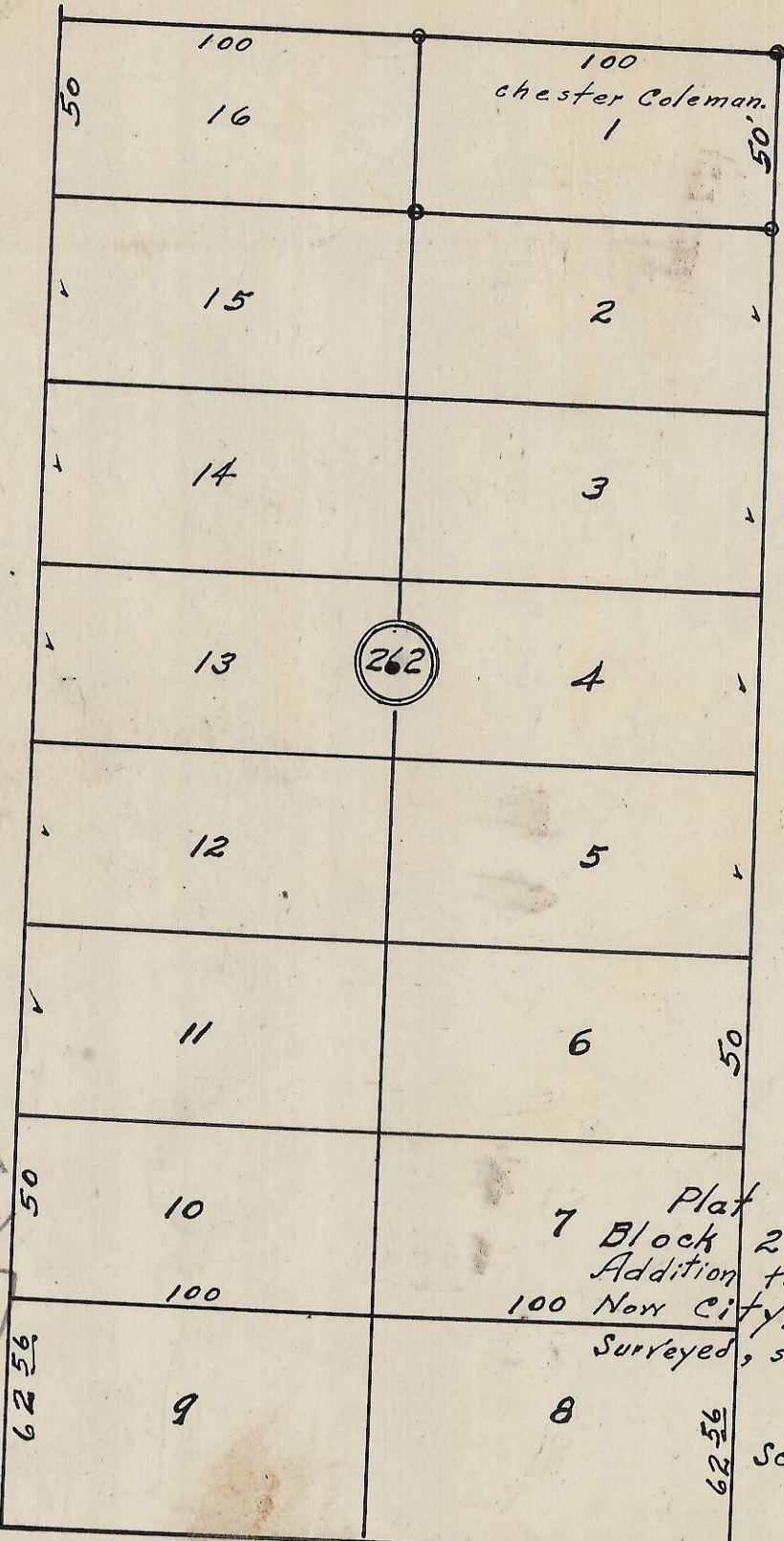


S.E. Isaac Ave.

60 60 60

S.E. 3<sup>rd</sup> St.

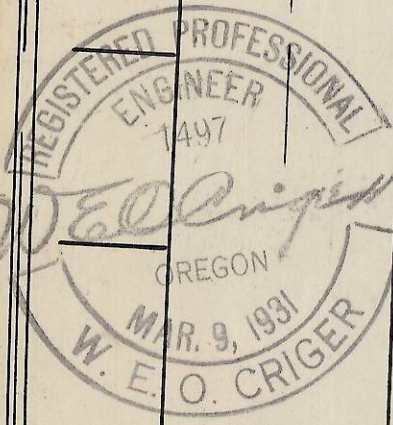
S.E. 4<sup>th</sup> St.



262

Plat showing  
 7 Block 262 of Reservation  
 Addition to the town -  
 100 Now City, of Pendleton, Ore.  
 Surveyed, staked & platted -  
 By W. E. O. Criger.

Scale: 1" = 50 ft.



South Boundary of Res. Add.

06-358-AX