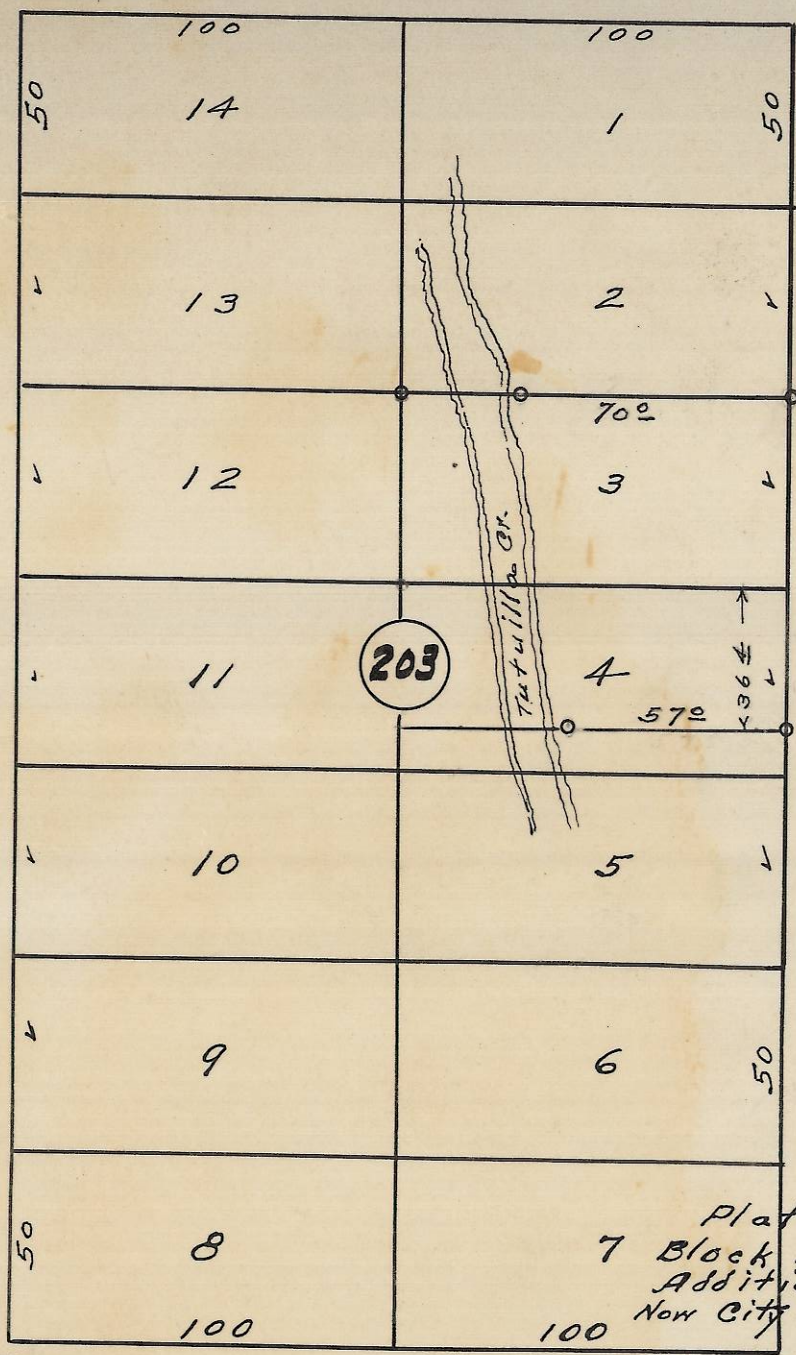


60 S. W. Hailey Ave 60

S. W. 22nd St.

S. W. 21st St.



Plat showing
 7 Block 203 of Reservation
 Addition to the town,
 Now City of Pendleton, Ore.
 surveyed, staked & platted.
 By - W. E. O. Criger -
 Scale: 1 inch = 50 Feet.

S. W. Isaac Ave.



06-353-Ax