

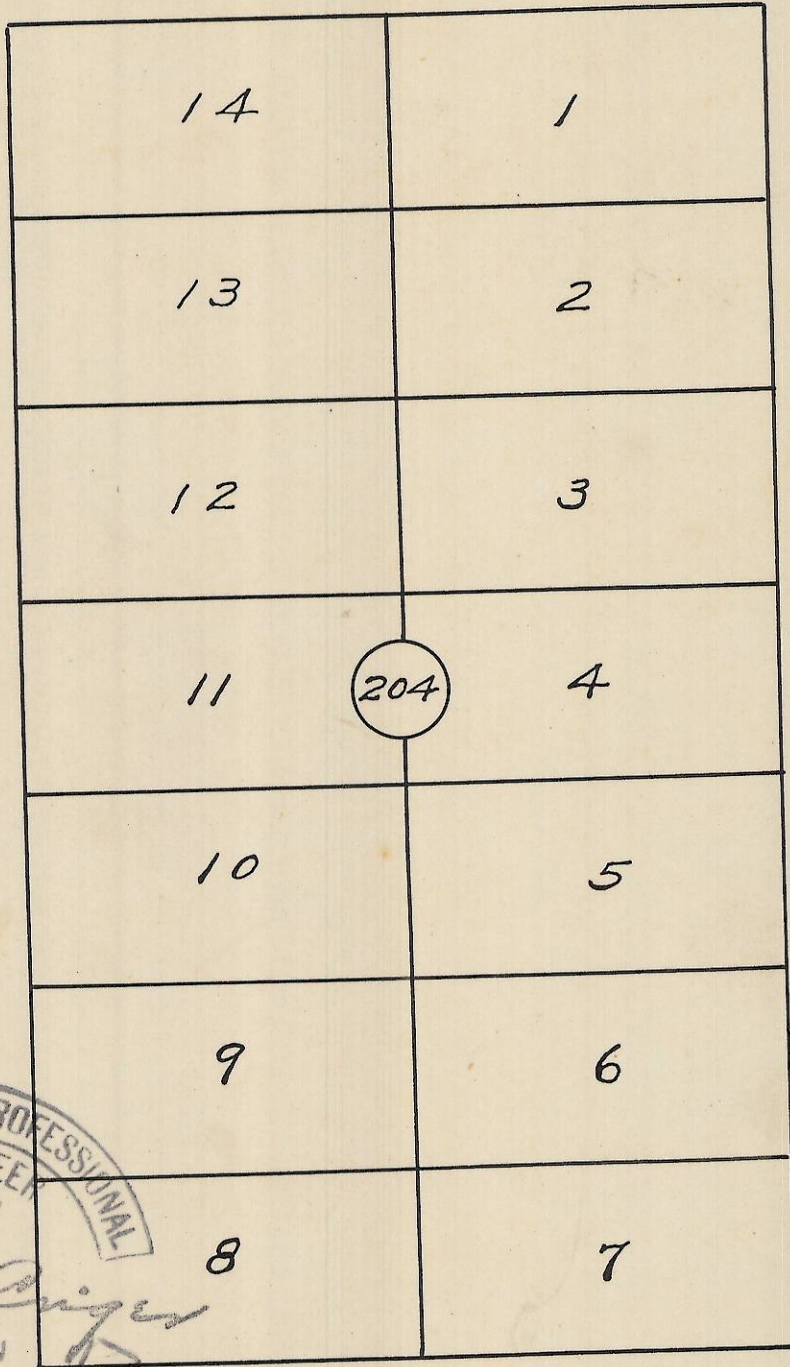
60

60

60

S.W. Hailey Ave.

60.



S. St.

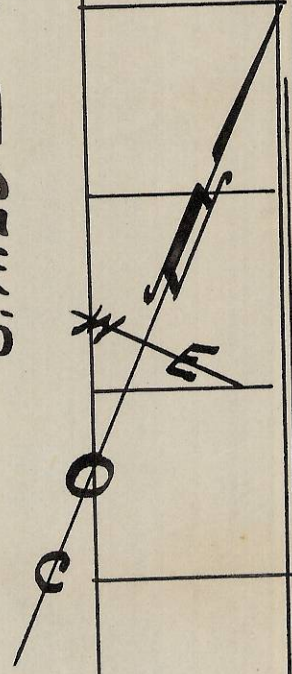
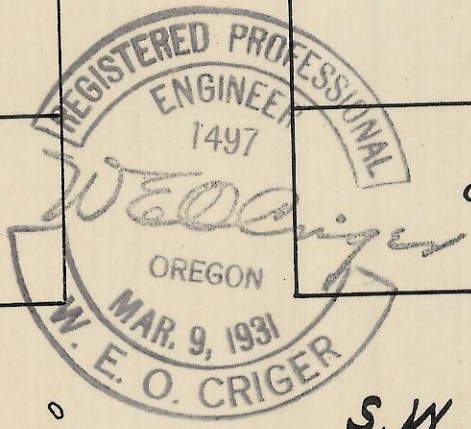
21st St.

S.W. 21st St.

S. St.

20th St.

S.W. 20th St.



60

60

S.W. Isaac Ave.

Plat showing
 Block 204 of Reservation Add.
 to the City of Pendleton, Ore.
 Surveyed, staked & platted,
 Oct - 1952 - By W.E.O. Criger.

60

06-351-AX

Scale: 1"=100'

Leo. Garrett - Em. Tr. Court - R. 2 - Bx - 56 C.