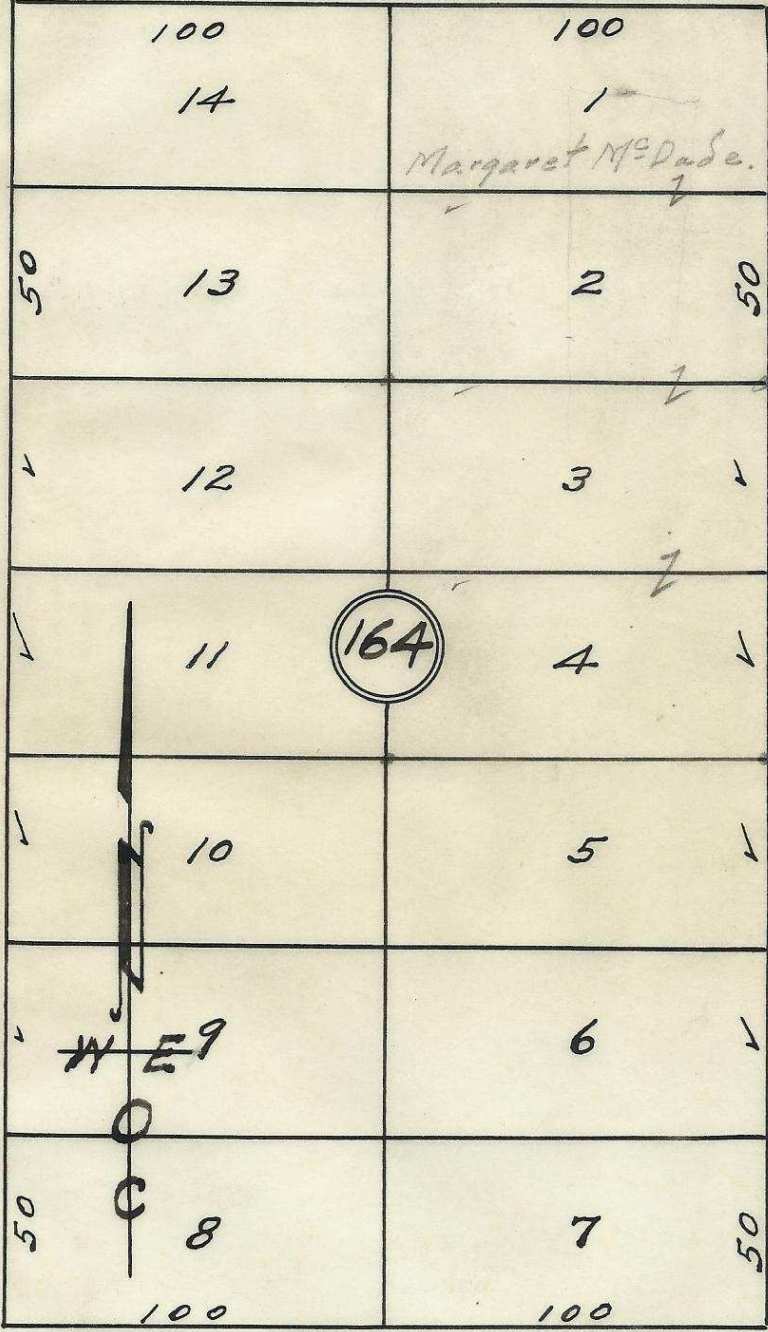
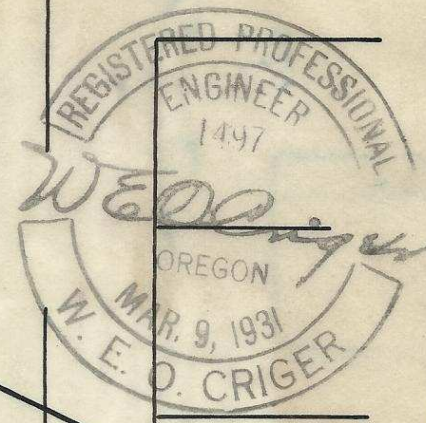


S.E. Court St. (Highway 30)



Plat of Block 164 of Res. Add. to the town, now City of Pendleton, Oregon. Surveyed, staked, & platted 1955. By W. E. O. Criger. Scale: 1" = 50'

S.E. 14th St.

S.E. 15th St.

S.E. Goodwin Ave.

2N32 11AA

06-340-AX

see James Petrie