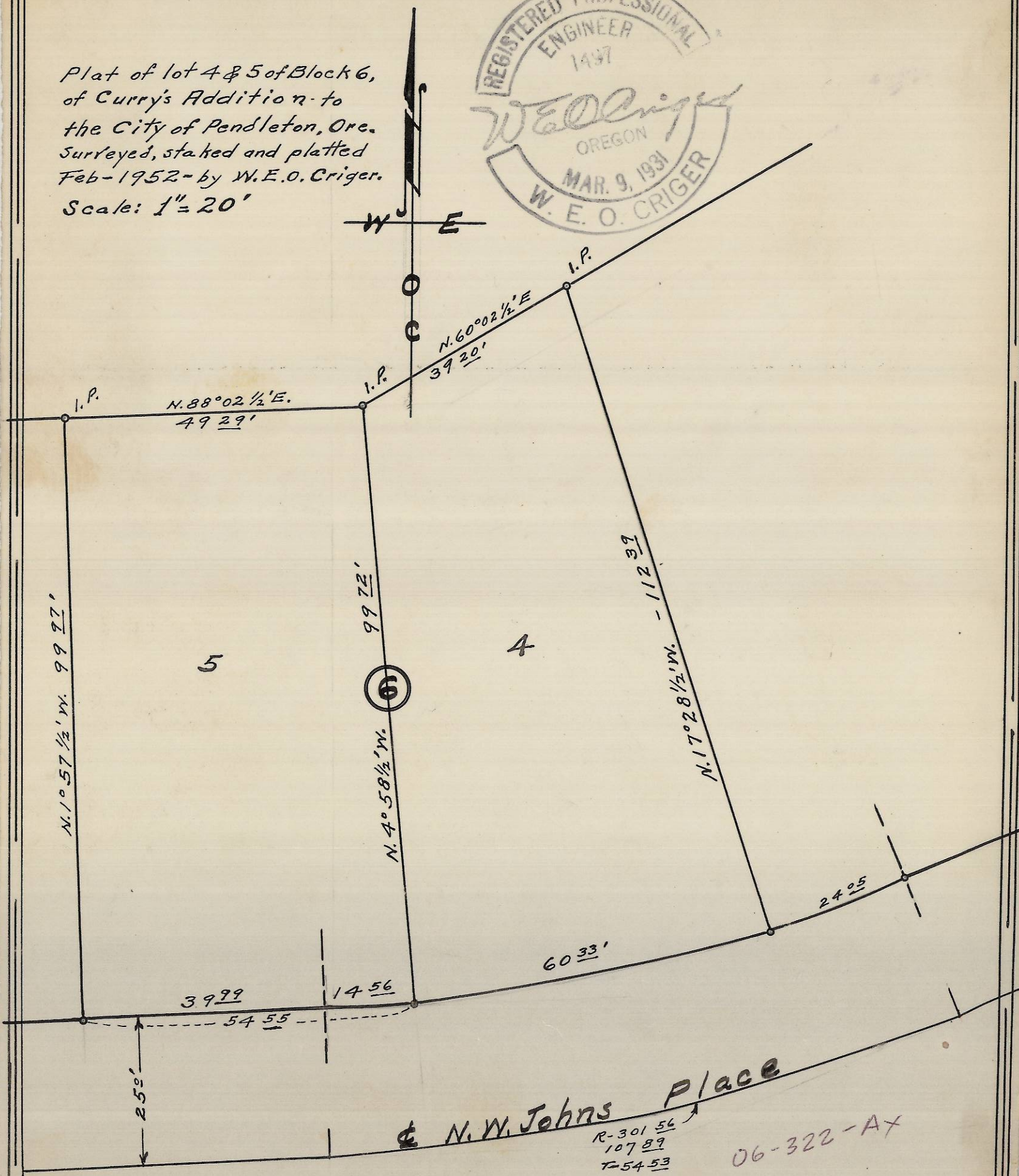


Plat of lot 4 & 5 of Block 6,
of Curry's Addition to
the City of Pendleton, Ore.
Surveyed, staked and platted
Feb-1952-by W.E.O. Criger.
Scale: 1" = 20'



N. W. Johns Place
R-301 56
107 89
T-54 53
06-322-A7

E.L. Fletcher. (4)