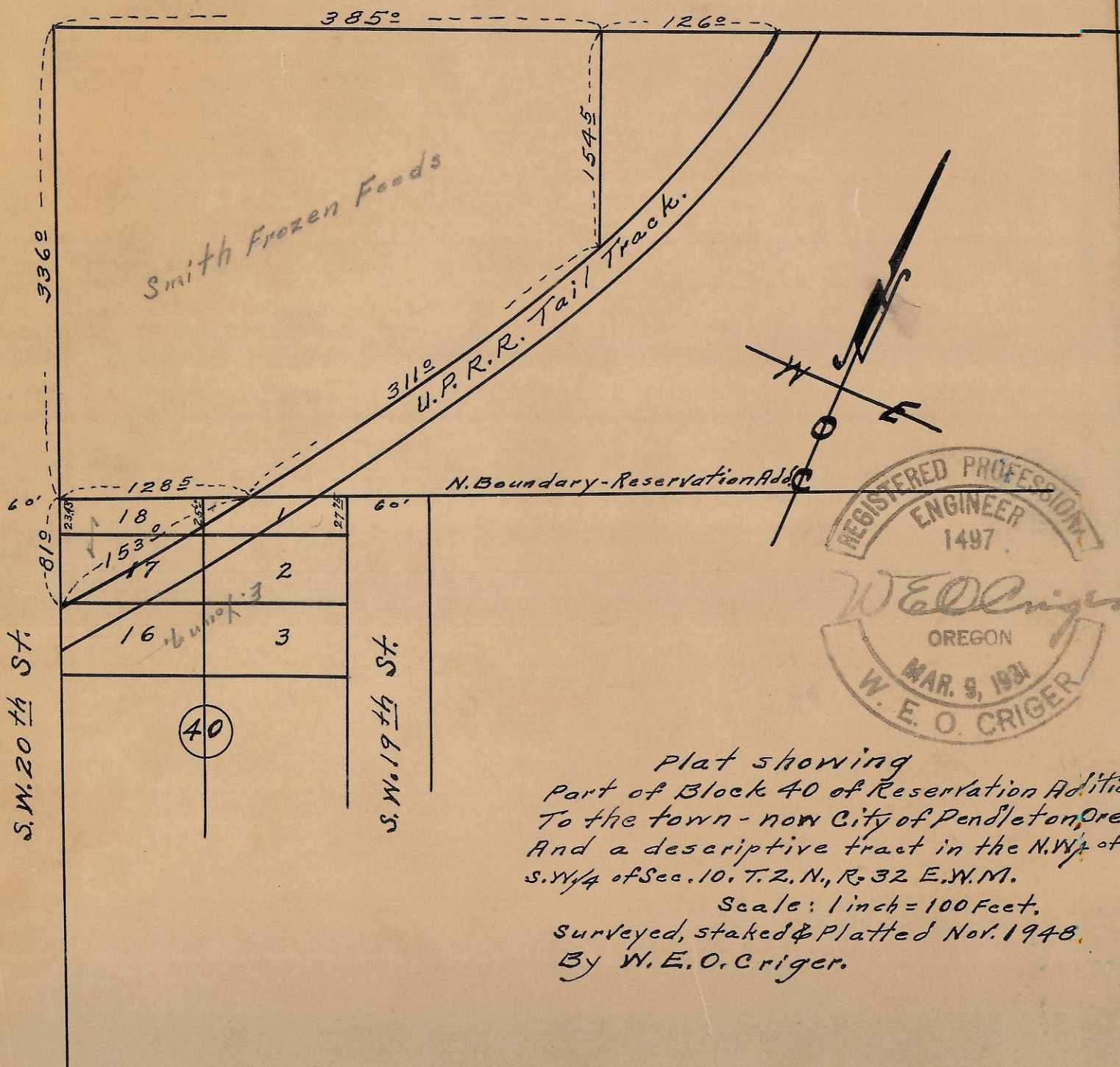


S.W. Court Place.



Plat showing
 Part of Block 40 of Reservation Addition
 To the town - now City of Pendleton, Ore.
 And a descriptive tract in the N.W. 1/4 of
 S.W. 1/4 of Sec. 10, T. 2, N., R. 32 E., N.M.
 Scale: 1 inch = 100 Feet.
 Surveyed, staked & Platted Nov. 1948.
 By W. E. O. Criger.

06-303-AX