

60'

60'

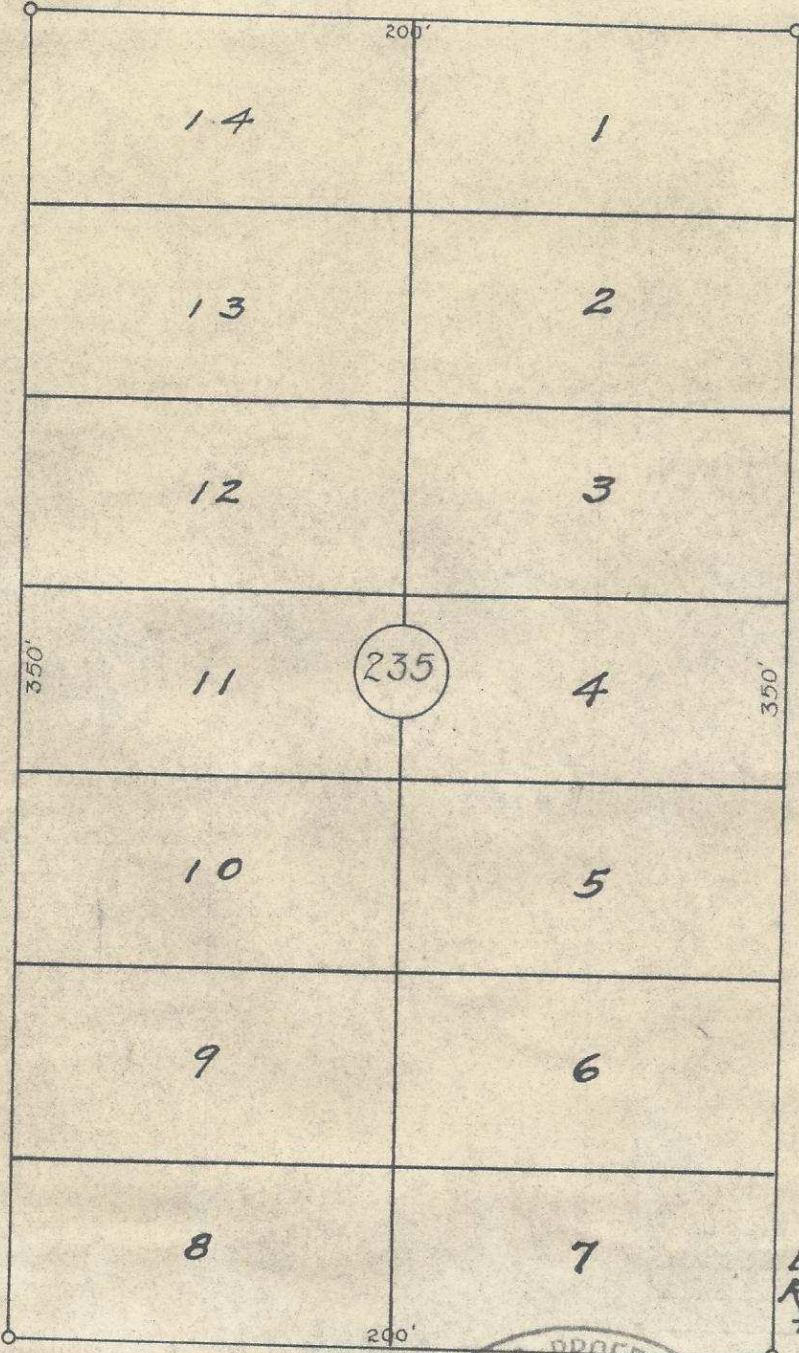
60'

60'

S. E. HAILEY AVE.

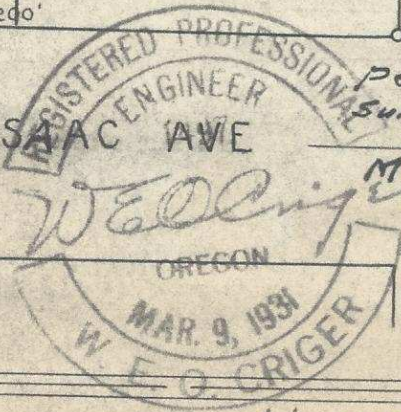
S. E. 10th St.

S. E. 11th St.



Plat of
 Block 235 of
 Reservation Add.
 to the town,
 Now City of
 Pendleton, Oregon.
 Surveyed, staked & platted

S. E. ISAAC AVE



Mar 1950
 By W. E. O. Criger
 Scale: 1"=50'

06-300-Ax

2N3211AC

Live say-807-S. E. 11th