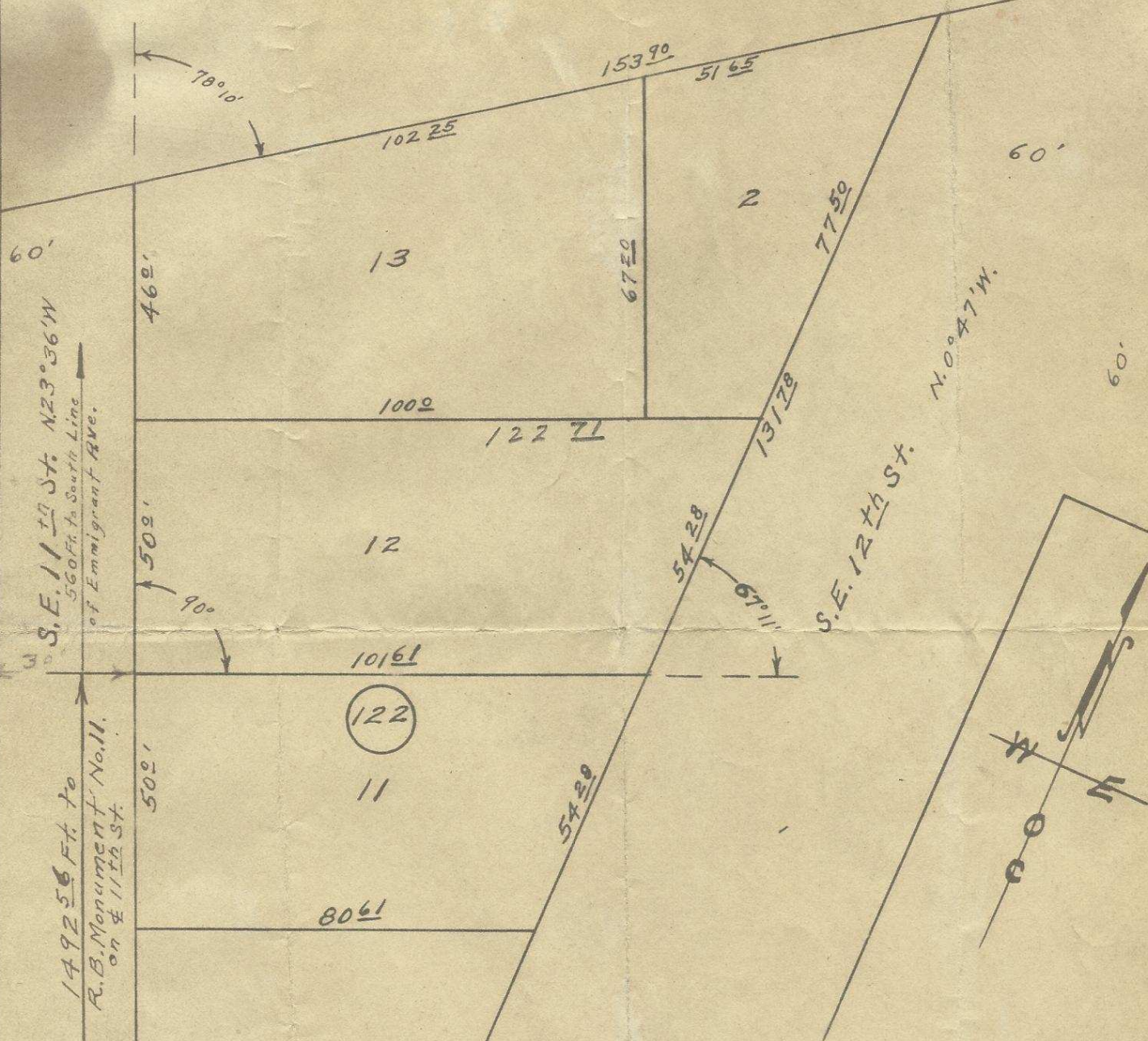


O. W. R. & N. R. R. CO.



REGISTERED PROFESSIONAL
ENGINEER
1497
W. Edinger
OREGON
MAR. 9, 1931
W. E. O. CRIGER

Plat showing
Lots No. 2, 12, & 13 of Block 122
of Reservation Addition to
The City of Pendleton, Oregon.
Surveyed August 1948.
For Alton White.
Scale: 1 inch = 30 Feet.

2N 32 WAB
06-292-Ax