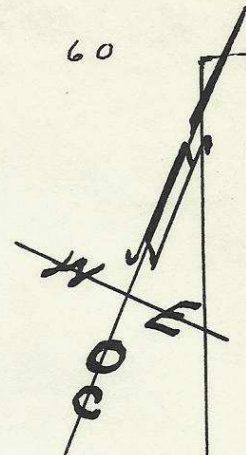
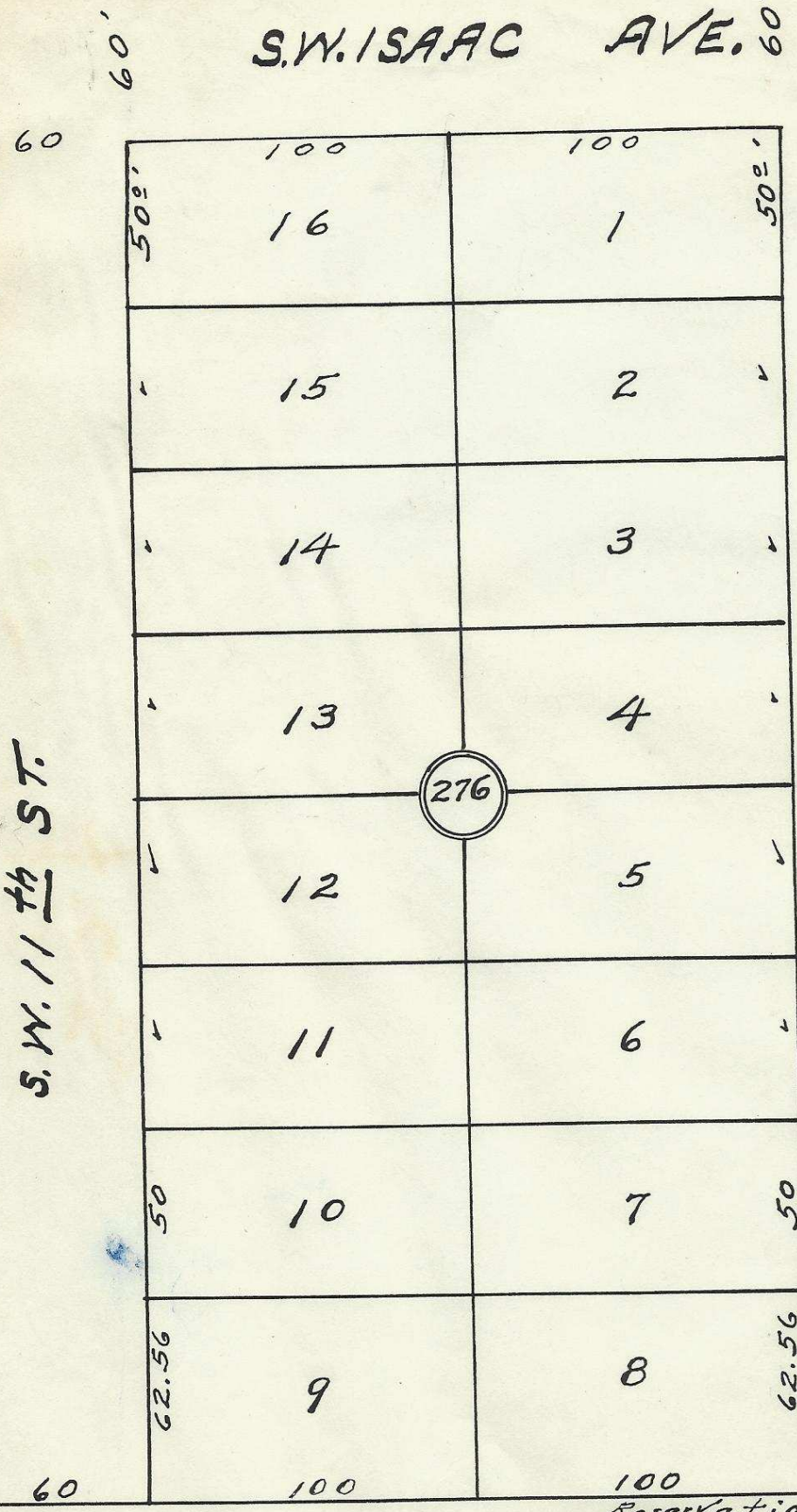


S.W. ISAAC AVE. 60'



Plat of Block 275 of Reservation Addition to the town, now City of Pendleton, Oregon. Surveyed, Staked, and platted, Jan. 1954 By W.E.O. Criger - Scale: 1 in. = 50 Ft.

S.W. 11th St.

S.W. 10th St.



276

Reservation Boundary

06-281-Ax

L.V. Carr - 1, 2, 3, 4 - 13 to 16. - (McKay Co.)

Chas. McQuinn - 14-2