

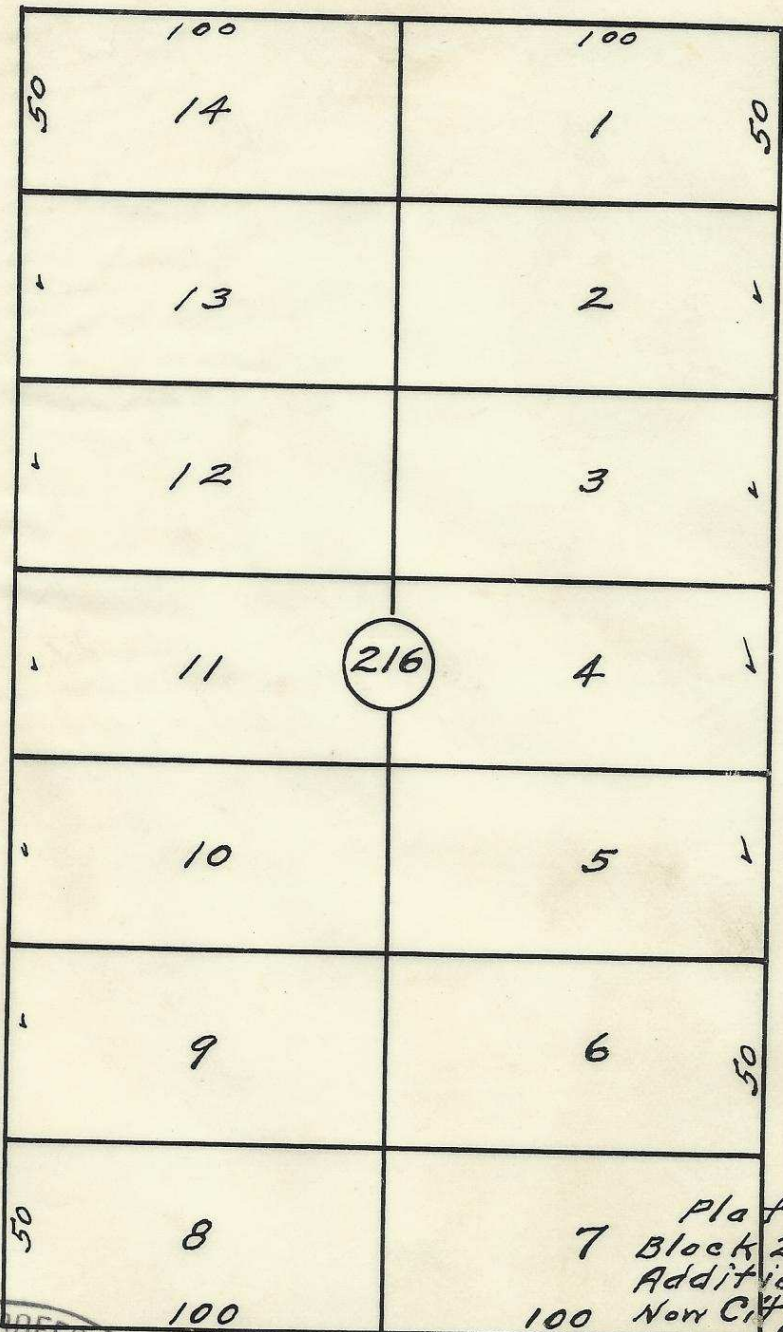
60

60

S. W. Hailey Ave.

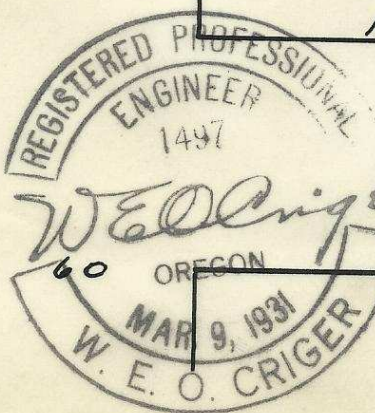
S. W. 9th St.

S. W. 8th St.



Plat showing
 7 Block 216 of Reservation
 Addition to the town,
 100 Now City of Pendleton, Ore.
 surveyed, staked & platted,
 Apr [redacted] - By W. E. O. Criger.
 Scale: 1 inch = 50 Feet.

S. W. Isaacs Ave



2032 10DA

06-277-Ax

60

60