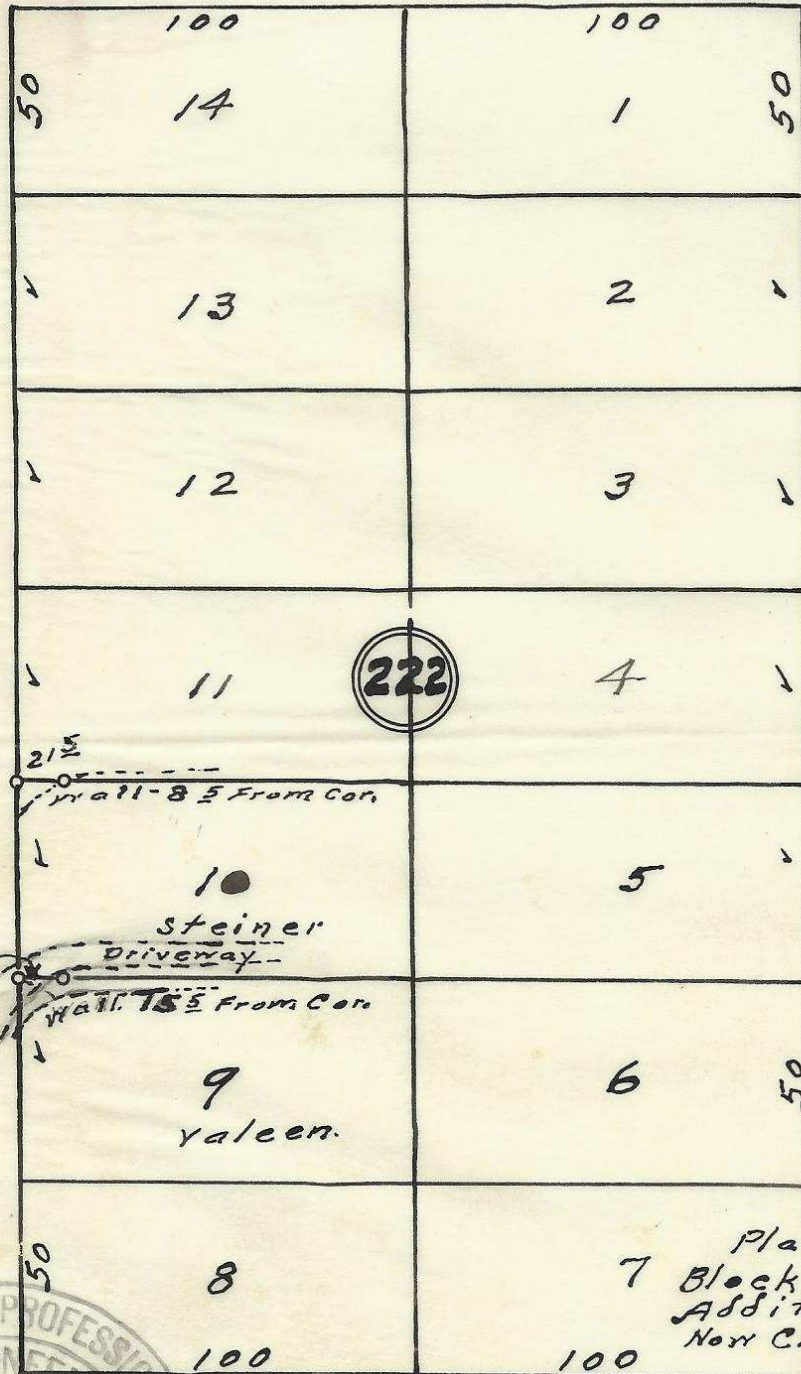


S. W. Hailey Ave

60

60

60



S.W. 3rd St

S.W. 2nd St

222

21 1/2

11-8 1/2 From Cor.

Steiner Driveway

21 1/2

15 1/2 From Cor.

Yaleen

Plat showing
7 Block 222 of Reservation
Addition to the town,
New City of Pendleton, Ore.

surreyed, staked & platted
By W. E. O. Criger.
Scale: 1 inch = 50 Ft.

S.W. Isaac Ave.

60

60



2032 11 CB

06-250-Ax

60

6