

60

60

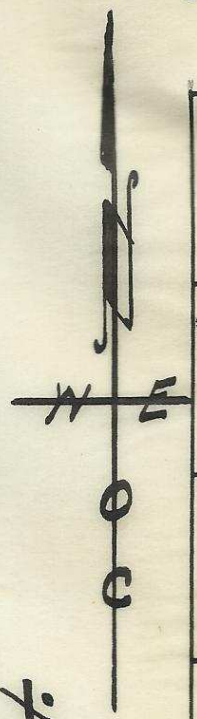
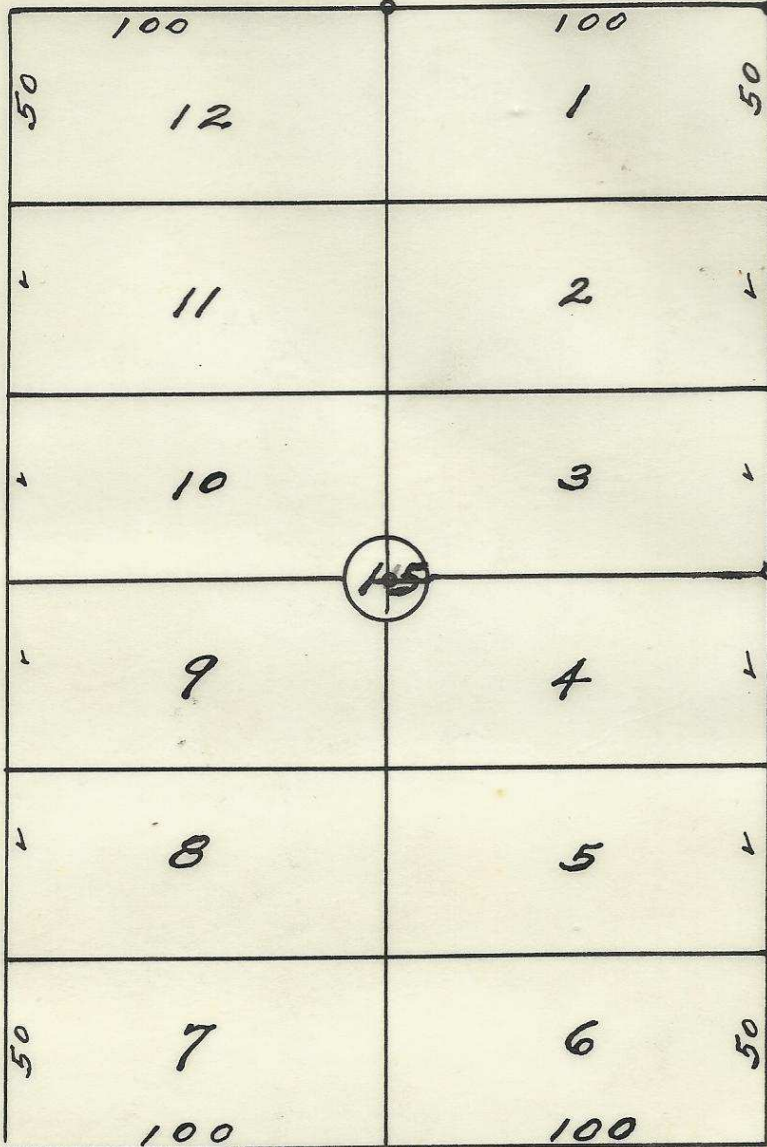
80

60

N. W. Gilliam Ave.

N. W. 3rd St.

N. Main St.



60

N. 88° 32' 24" E

80

N. W. Furnish Ave.



2032 3DD

Plat showing
 Block 15 of Livermore's Add'n
 to the town, now City of
 Pendleton, Oregon.
 Surveyed, staked, and platted
 Nov. - 1950 - By W. E. O. Criger.
 Scale: 1 inch = 50 Feet.

06-214-Ax