

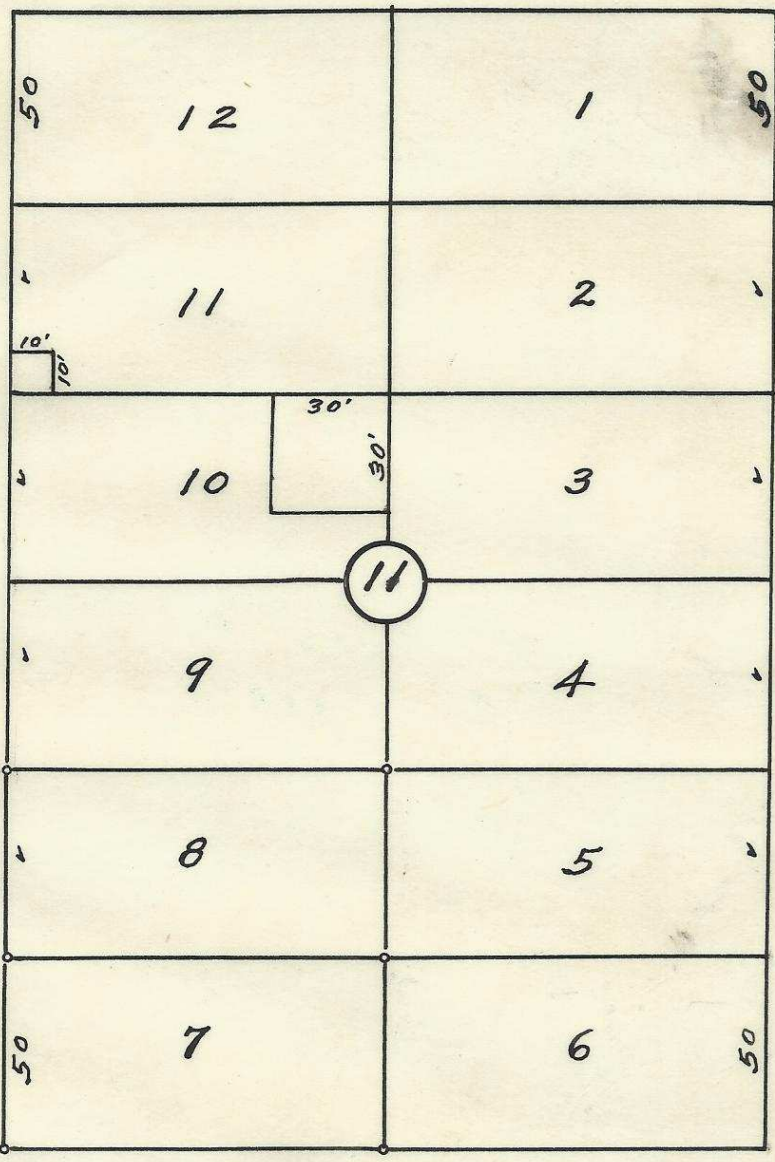
60

N. W. Furnish Ave.

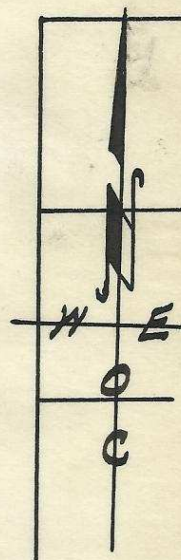
60

60

N. W. 6th St.



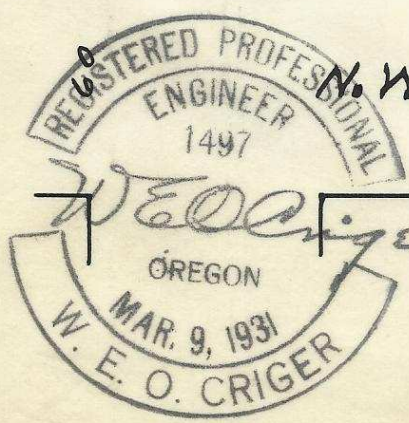
N. W. 5th St.



60

60

N. W. Ellis Ave.



2032 3DC

Plat showing
 Block 11 of Livermore's Add'n
 to the town, new city of
 Pendleton, Oregon.
 Surveyed, staked, and platted
 June - 1950 - By W. E. O. Criger.
 Scale: 1 inch = 50 Feet.

06-213-Ax