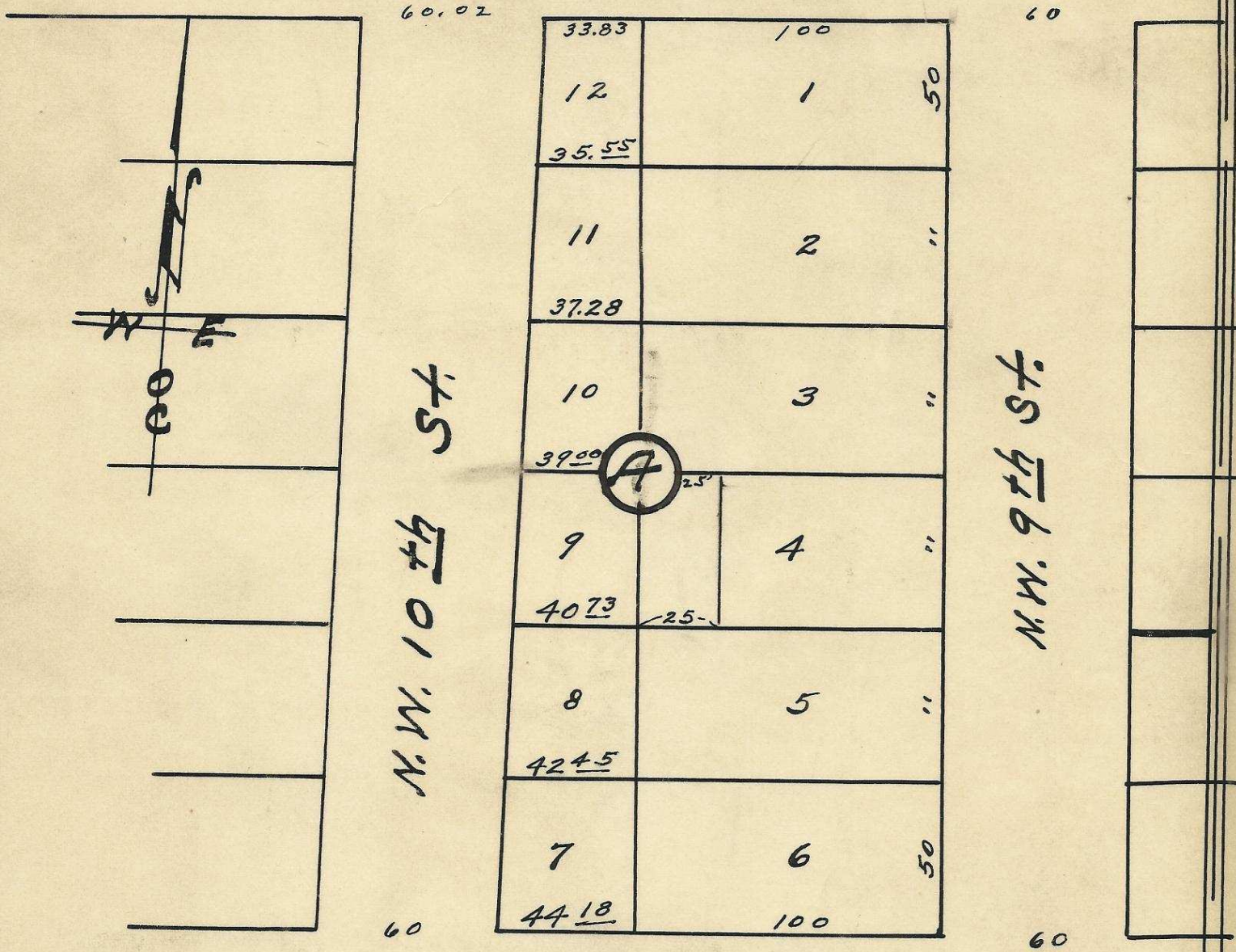
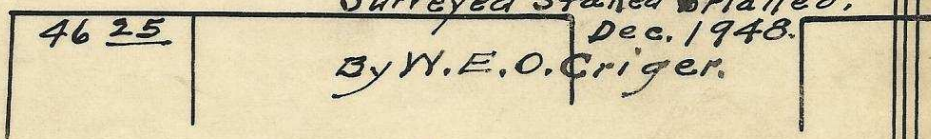
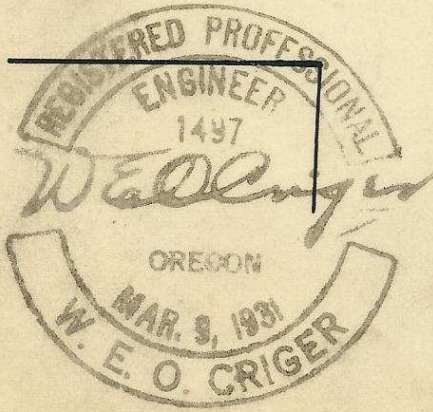


N.W. Gilliam Ave.



N.W. Furnish Ave.

Plat showing
 Block "A" of Livermore's
 Addition to Pendleton, Ore.
 Scale: 1 inch = 50 Ft.
 Surveyed, Staked & Platted,
 Dec. 1948.
 By W. E. O. Criger.



2 N 3 2 3 DC

06-198-Ax

Henry Schaefer