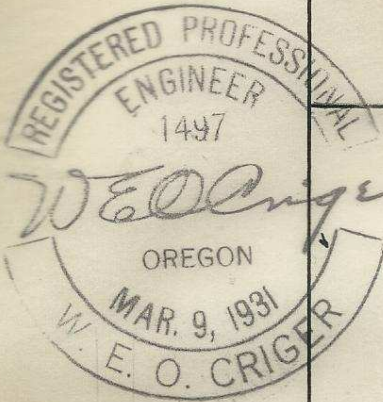


60'

50'

2

11

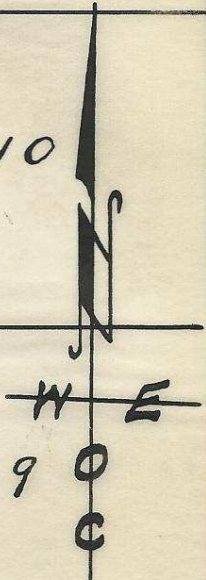


S. E. 9th St.

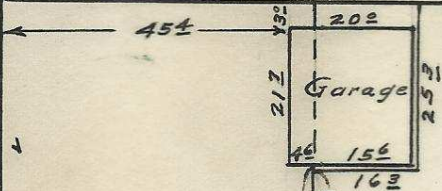
3



10



4



8

50'

6

7

Plat showing
Part of Block "D" of Jacob's
Addition to Jacob's Addition
to the town, now City of

Pendleton, Oregon.
Surveyed, staked, & platted,
June - 1949 - By W. E. O. Criger.
Scale: 1 in = 30 Ft.

S. E. Byers Ave.

2N 32 2 CD

50'

60'

06-196-Ax