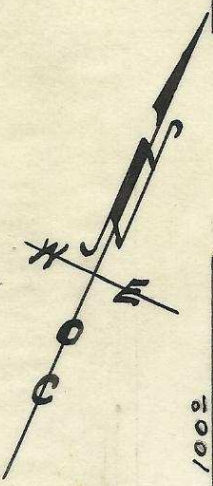


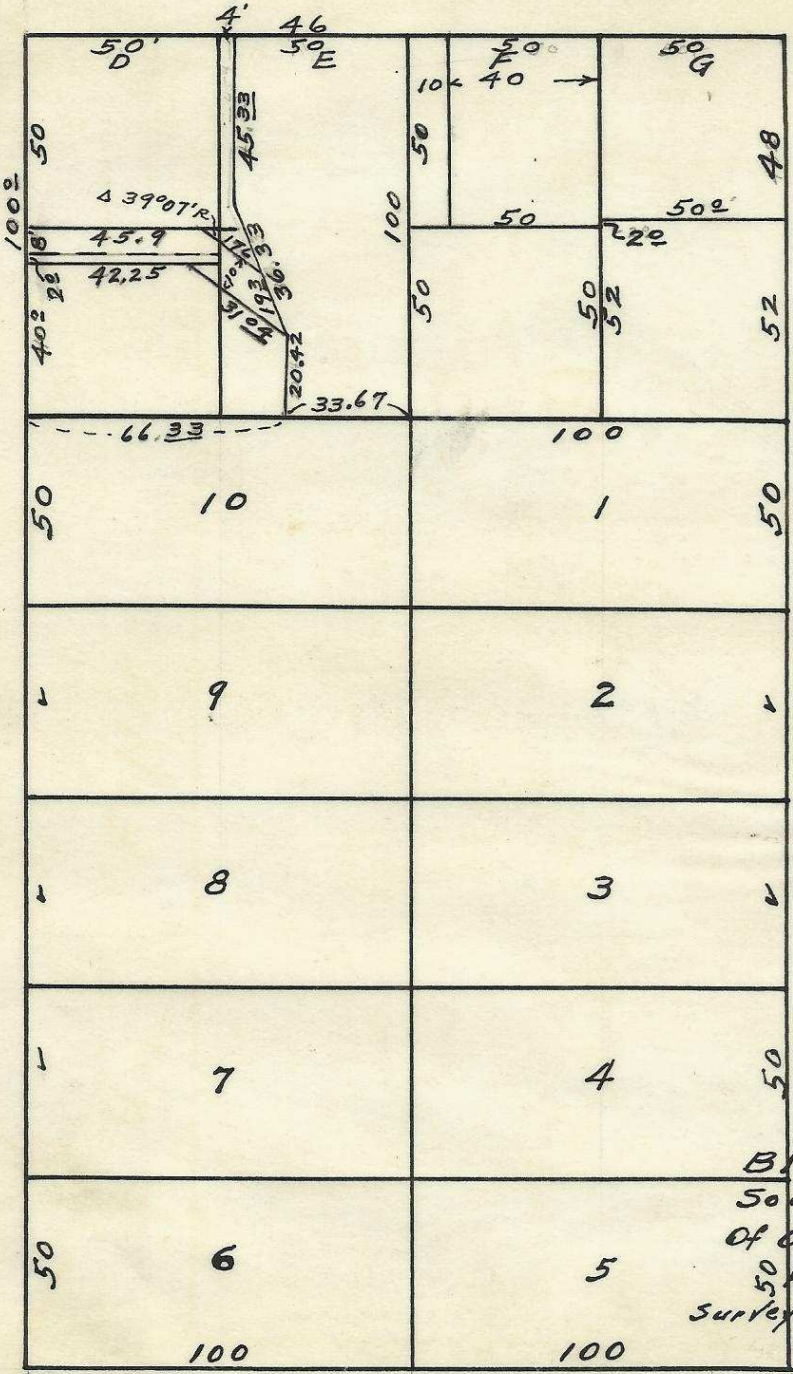
S.E. DORION AVE.

(Alta.)



S. E. 3rd ST. (Thompson)

S. E. 4th ST. (college)



Plat of
Block "B" of
South Pendleton
of original town of
Pendleton, Ore.
surveyed, staked & plotted May, 1950
By W. E. O. Criger.

Scale: 1" = 50'

S.E. EMIGRANT AVE.

(webb)

2N32118B

06-179-Ax