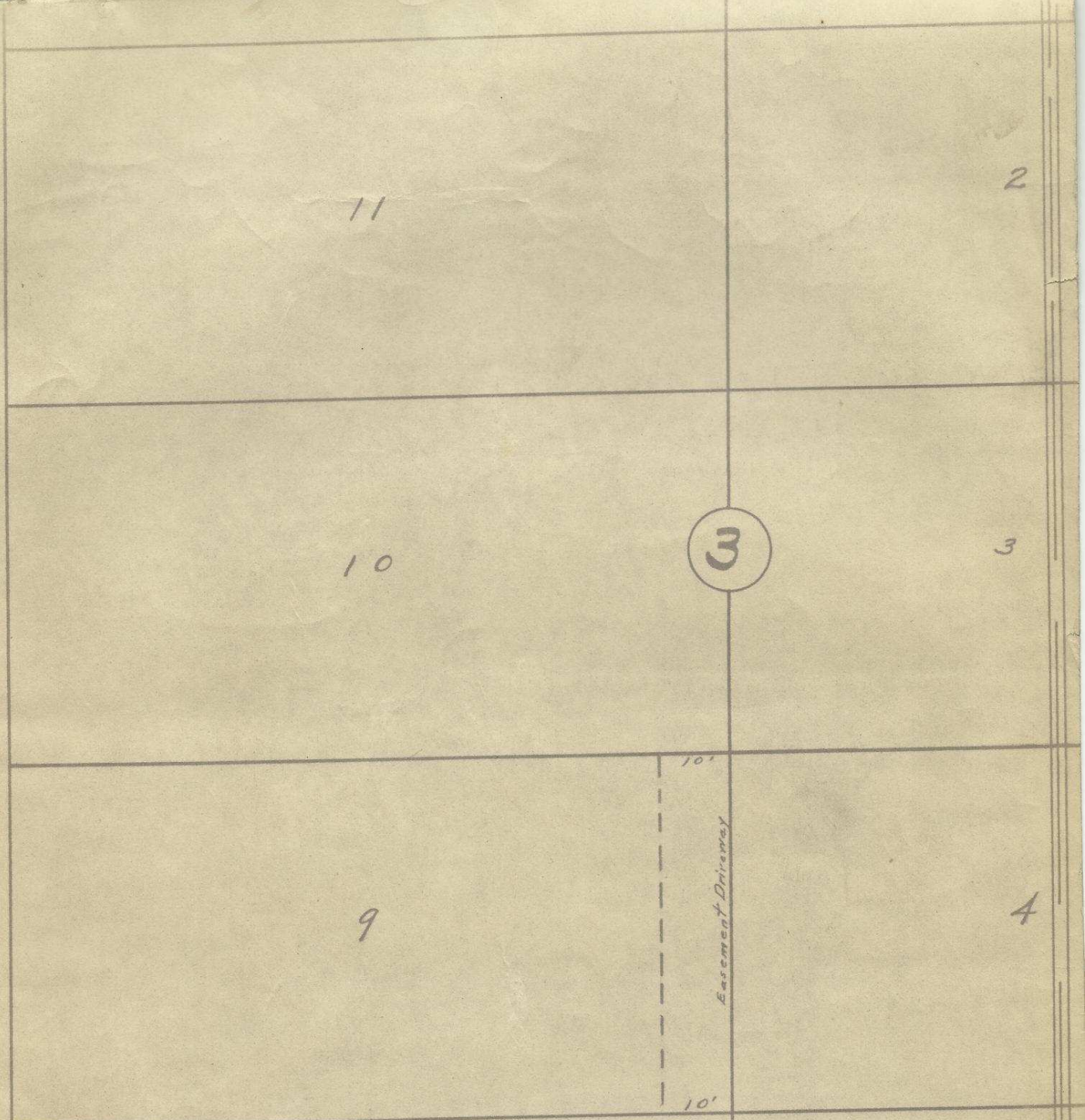


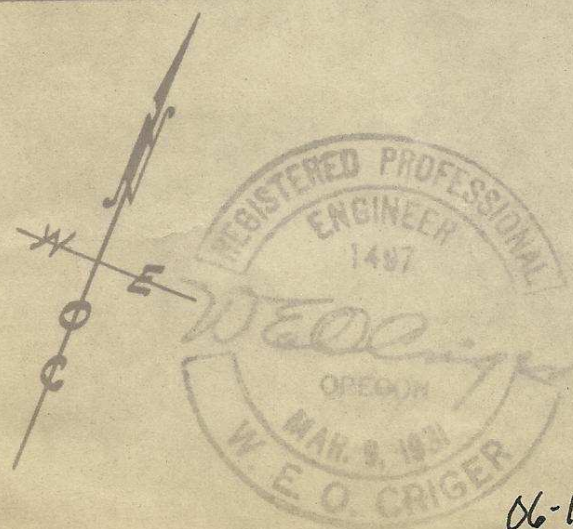
S. W. 1 st. St.



2N32 10AA

Plat showing
 lots 9 and 10 of Block 3, of
 Original town of Pendleton, Oregon,
 Surveyed, staked and platted, Jan. 1949.
 By W. E. O. Criger.
 scale: 1 inch = 50 feet.

(water and sewer easement over lot 4,
 to serve 1/2 of lot 4, B1k3.)



06-176A8 B P O E. —