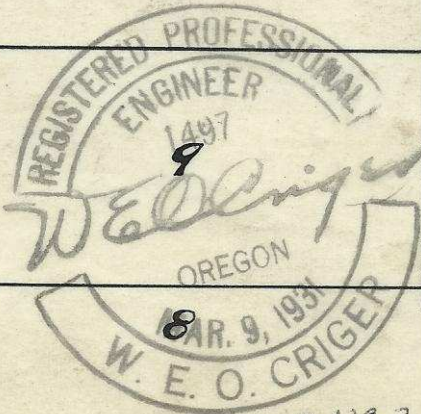
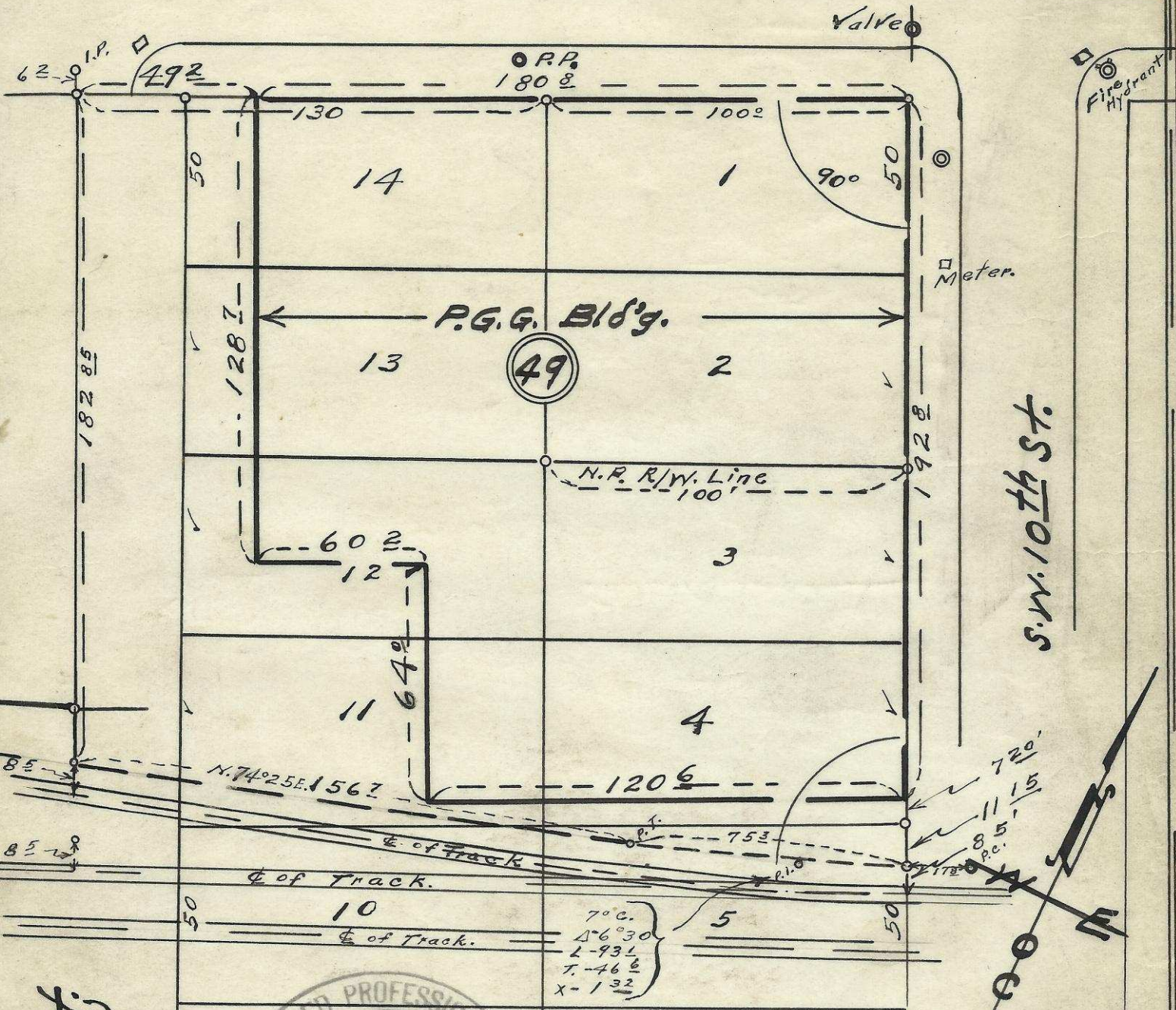


S.W. Dorian Ave.

M.H. 8' deep



Plat showing  
 6 Portion of Block 49 of  
 Reservation Addition  
 to the town, now City of  
 Pendleton, Oregon.

Surveyed, staked & platted  
 7 Sept. - 1955 -  
 By W. E. O. Criger.

2N32-10 AC

06-99-Ax

Scale: 1" = 40'

6