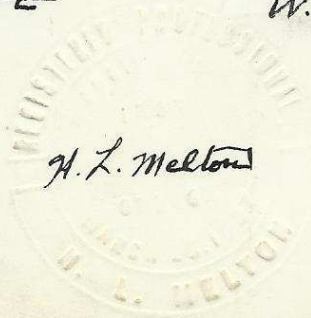
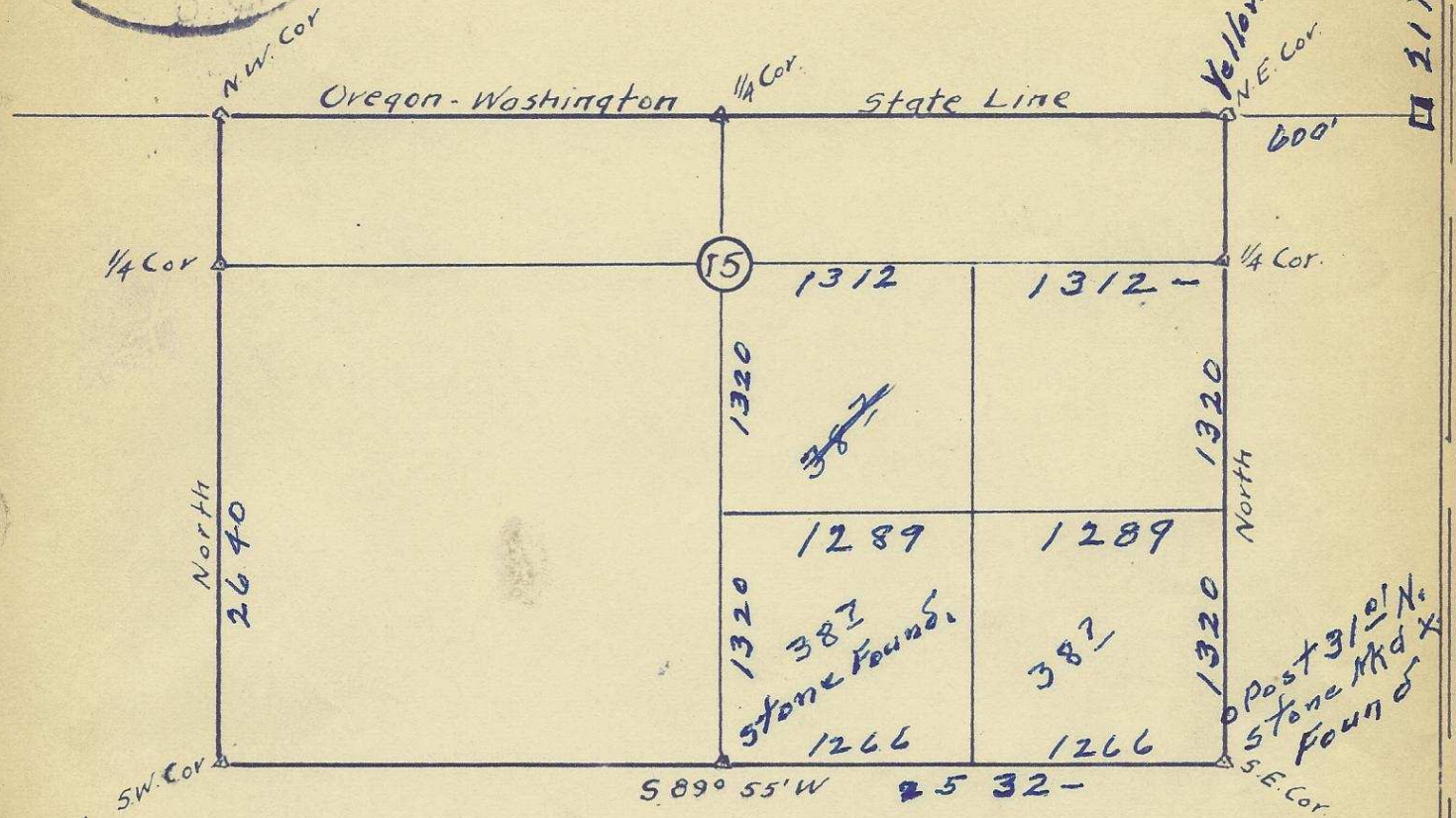
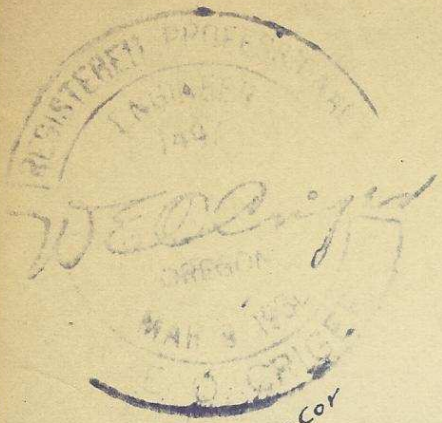


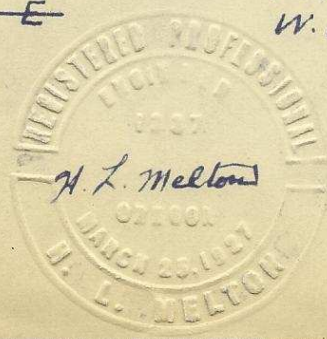
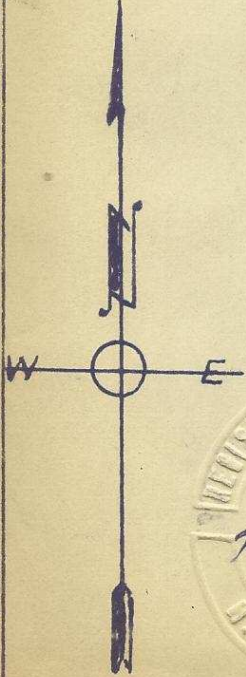
PLAT
OF
SECTION 15 T. 6 N. R. 34 E. W. M. OREGON
In Umatilla County. Surveyed and
Platted June 1951 By H.L. Melton and
W. E. O. Criger. Scale 1" = 1000 Ft.



06-66-Ax



PLAT
OF
SECTION 15 T.6N R.34 E.W.M. OREGON
In Umatilla County. Surveyed and
Platted June 1951 By H.L. Melton and
W.E.O. Criger. Scale 1" = 1000 Ft.



06-66-Ax