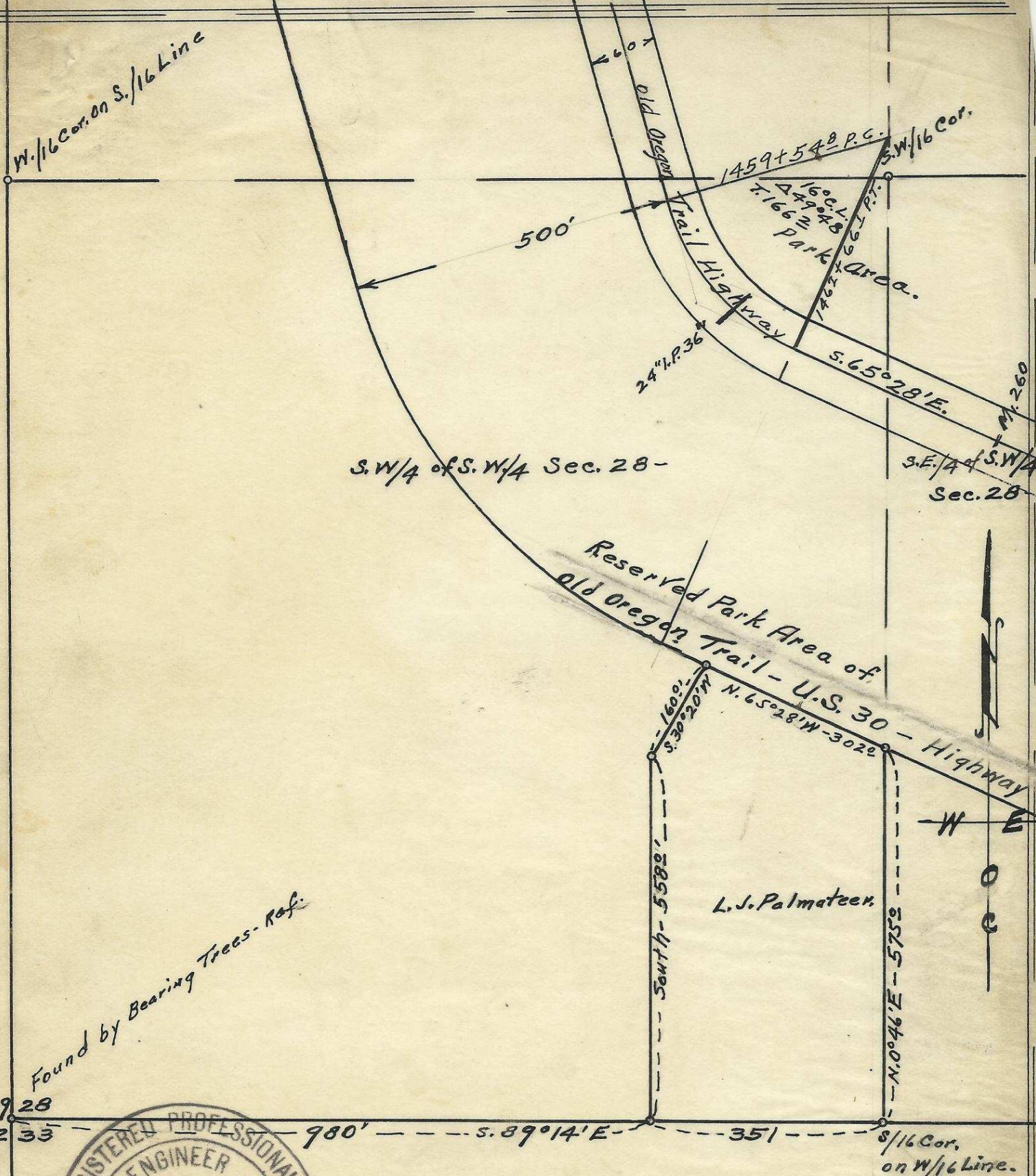


W. 1/16 Cor. on S. 1/16 Line



S.W. 1/4 of S.W. 1/4 Sec. 28 -

S.E. 1/4 S.W. 1/4 Sec. 28

Reserved Park Area of
 old Oregon Trail - U.S. 30 - Highway

L.J. Palmateer.

Found by Bearing Trees - Ref.

29 28
32 33



Map of S.W. 1/4 of S.W. 1/4 of Sec. 28
 T. 1 N., R. 35 E., W.M.
 surveyed, Staked & Platted, June, 1950
 By: W.E.O. Criger and F.B. Hayes.
 Scale: 1" = 200'

See - B-146-P-585
 B-130-P-104
 B-129-P-229

06-62-Ax