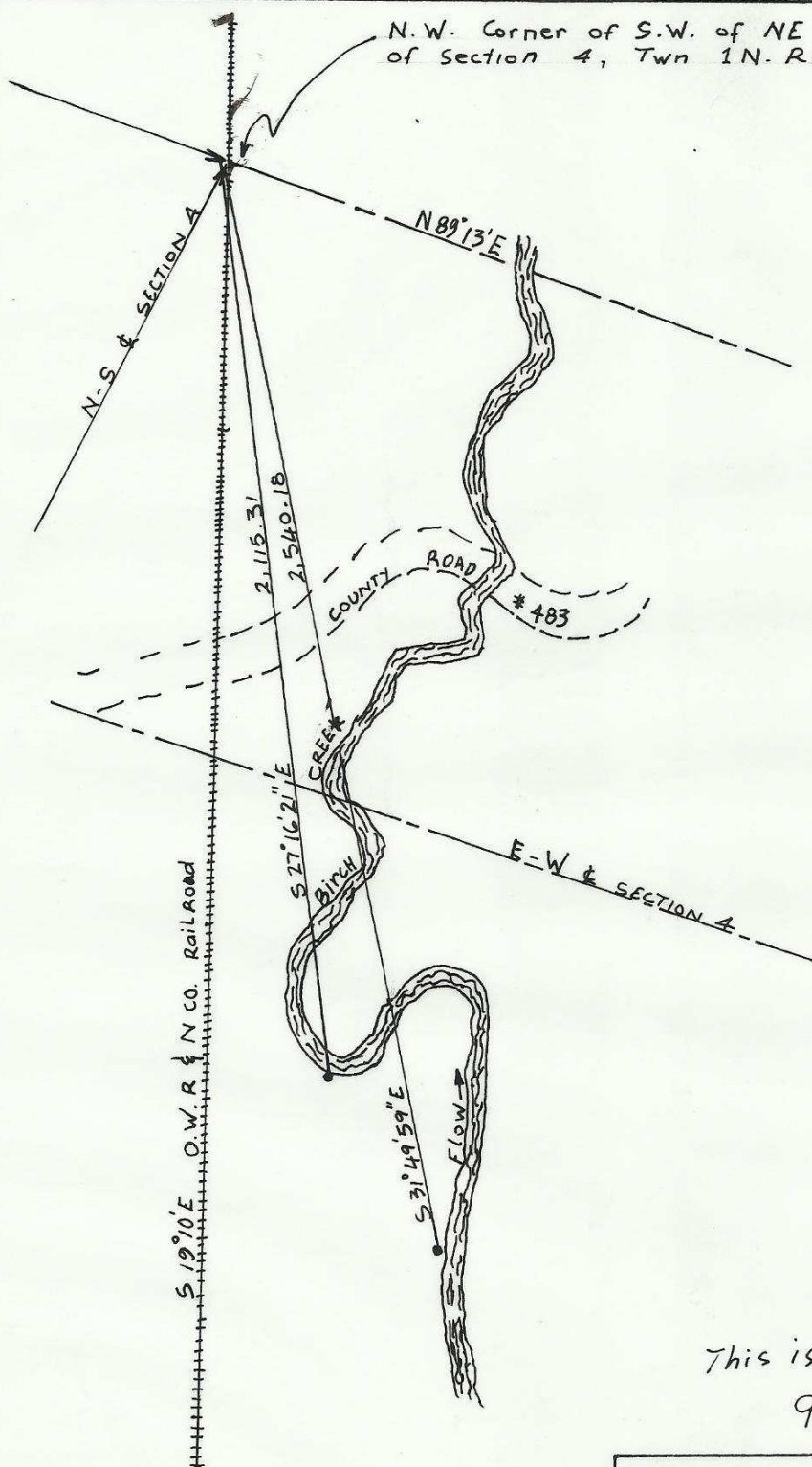


N.W. Corner of S.W. of NE 1/4  
of Section 4, Twn 1N. R32E.W.M.



ENGINEERS CERTIFICATE:

I, STANLEY G. WALZUS OF PENDLETON, OREGON DO HEREBY CERTIFY THAT THIS MAP WAS MADE FROM NOTES TAKEN DURING AN ACTUAL SURVEY MADE BY ME IN AUGUST, 1956, THAT THE MONUMENTS SHOW ON THIS MAP CONSIST OF ONE INCH DIAMETER PIPES 36" LONG AND DRIVEN 30" IN THE GROUND ARE LOCATED S 27° 16' 21" E; 2,115.31'; AND S 31° 49' 59" E; 2,540.18' RESPECTIVELY FROM THE NW CORNER OF THE S.W. 1/4 OF THE NE 1/4 OF SECTION 4; TWN 1 N; R 32 E.W.M.

This is a copy traced (TT) 11-99.

99-240-Ax

SURVEY FOR	
NELLIE SPARKS ESTATE	
SCALE: 1" = 400'	DATE: 9-7-56
VERNON B. TENNESON & ASSOC. CONSULTING ENGRS.	
PENDLETON	OREGON