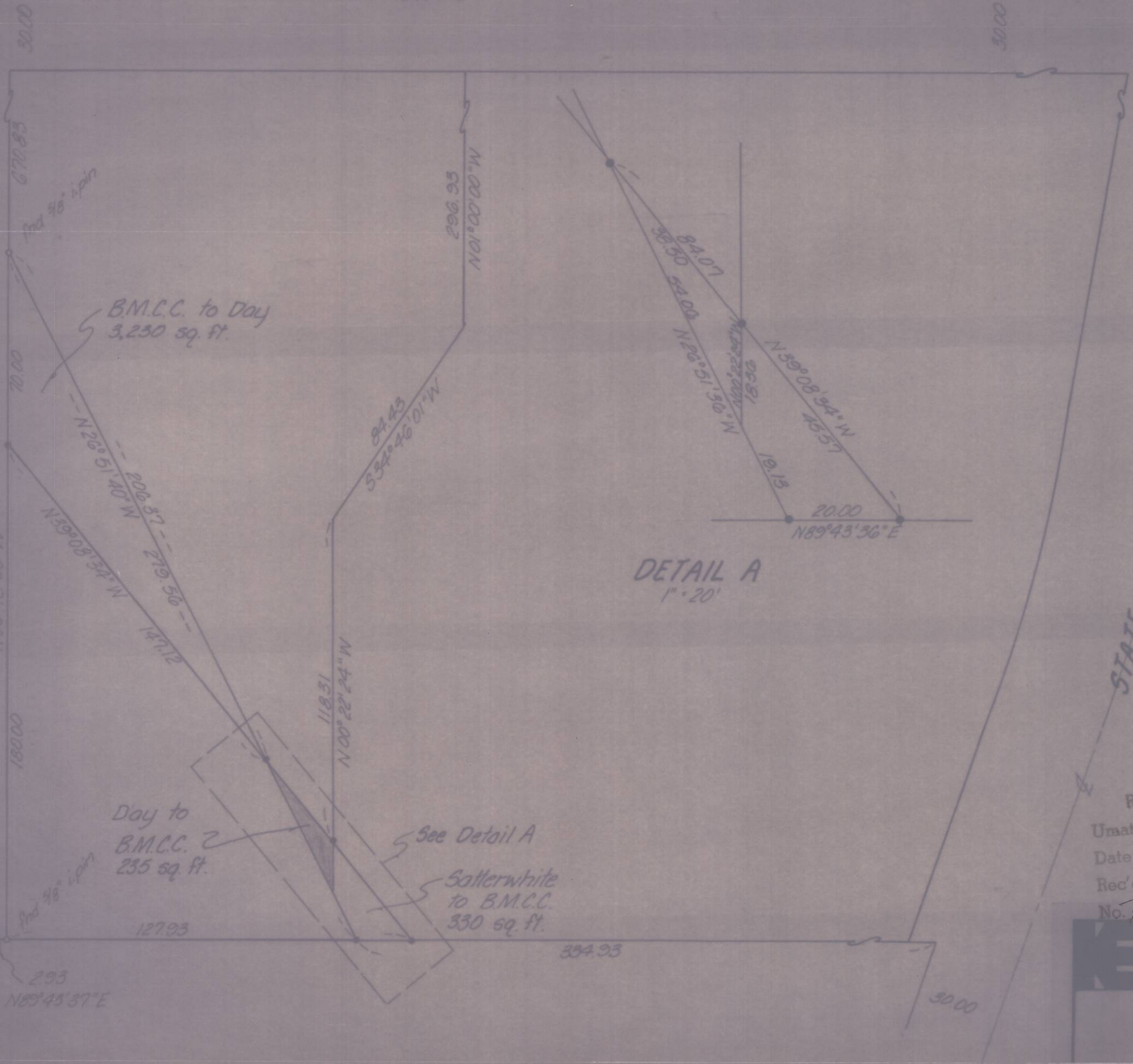


PUBLIC ROAD



BM.C.C. to Day
3,230 sq. ft.

Day to
B.M.C.C.
235 sq. ft.

See Detail A

Satterwhite
to B.M.C.C.
330 sq. ft.

DETAIL A
1" = 20'



- denotes 3/8" i. pin set
- denotes monument find as noted

Bearings and distance are based on Stan Wallulis survey of 1960.

RECEIVED BY
Umatilla County Surveyor
Date 8-19-80
Rec'd By BLS
No. R-145-A

REGISTERED
PROFESSIONAL
LAND SURVEYOR

OREGON
DAVID H. KRUMBEIN
933

KRUMBEIN ENGINEERING CO
ENGINEERS - SURVEYORS - PLANNERS
221 S. Main, Pendleton, Oregon

Survey for
B.M.C.C.
SE 1/4, SE 1/4, Sec. 4, T2N, R32E

SCALE	1" = 20'
DATE	8-12-80
DRN. BY	M.L.J.
CKD BY	D.H.M.
DRNG. NO.	80-145-A

R-145-A