

5N, R 35, S 60 120
Q-1671

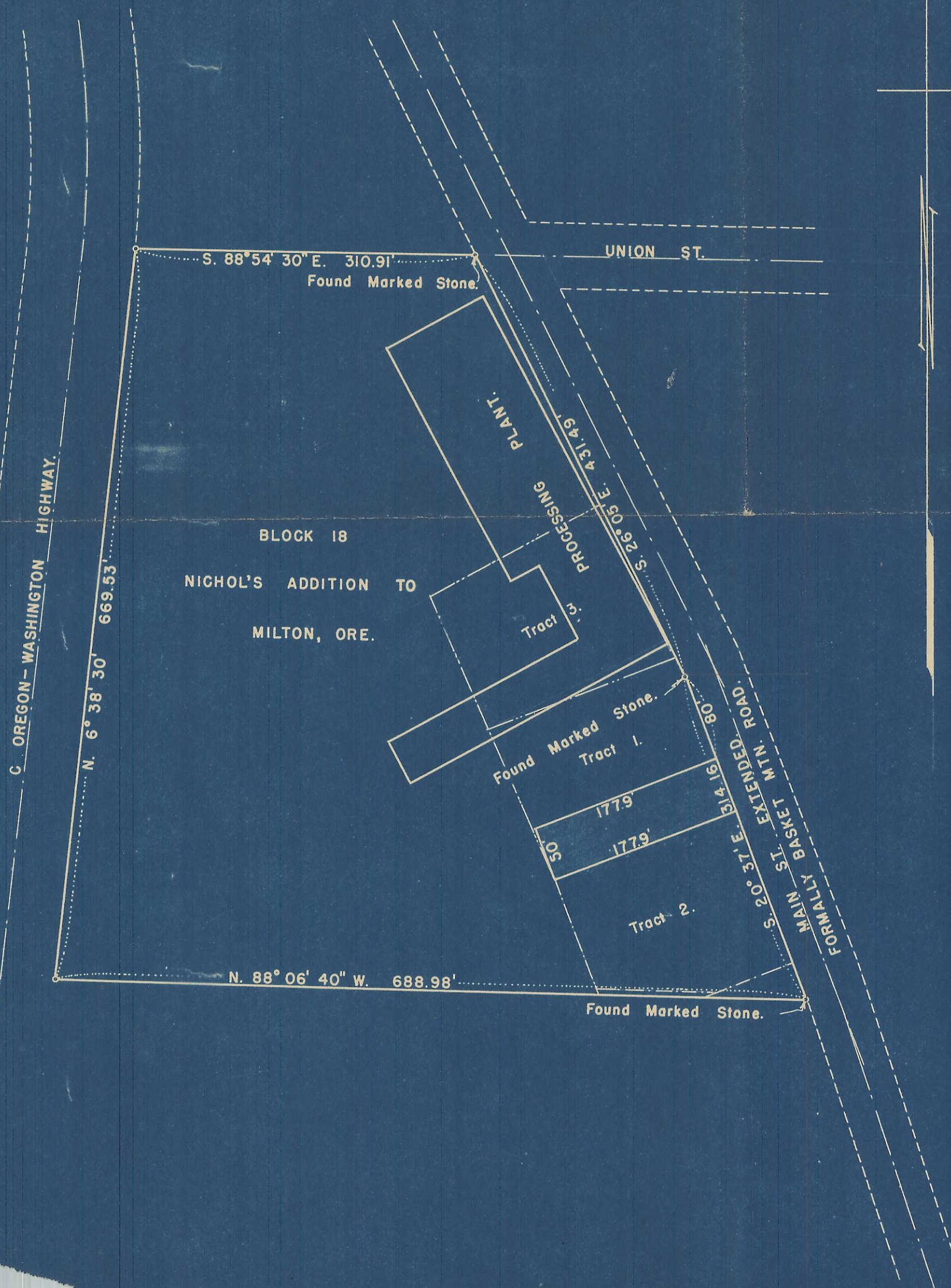
PLAT OF
BLOCK 18 NICHOLS ADDITION TO
THE CITY OF MILTON, OREGON.

Scale 1" = 100'



Note.

Tract No. 1, 2 and 3 are plotted from description and it is probable that they will not fit the plot as shown hereon. The location as plotted might change by a very small amount if located by survey. Except Tract 3.



Q-1629-A

Q-1671