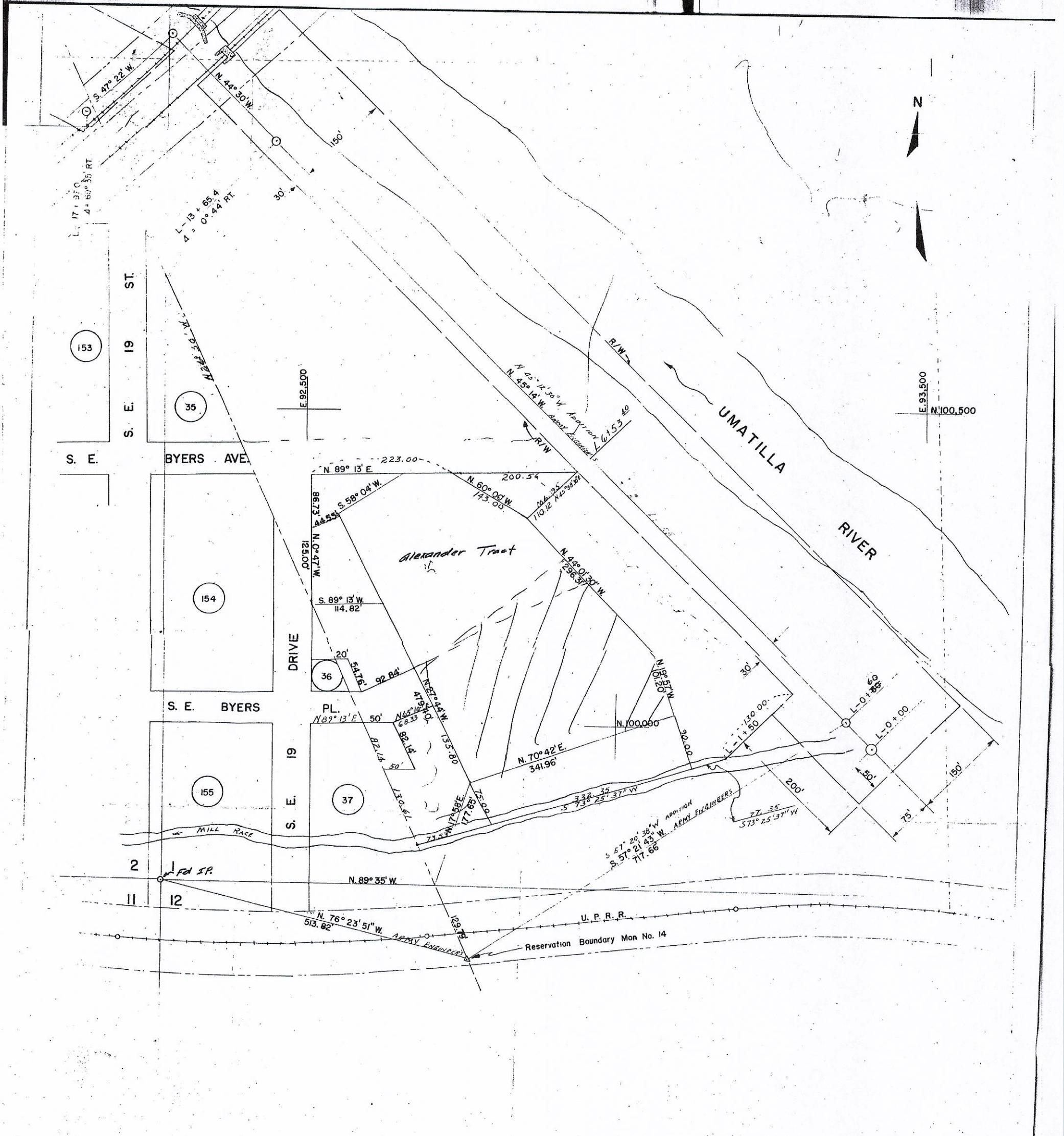


N



10282

<b>THE CITY OF PENDLETON</b>		
OFFICE OF THE CITY ENGINEER		
<b>LITTLE LEAGUE PARK &amp; ADJACENT AREA</b>		
<b>THE SW<sup>+</sup> SW<sup>+</sup> SEC. 1, T2N, R.32E, W.M.</b>		
DR BY: K/hgel	IMPROVEMENT DIST. NO.	
CK. BY:		
SCALE: 1" = 100'	DATE: 3-6-58	DRG. NO.: