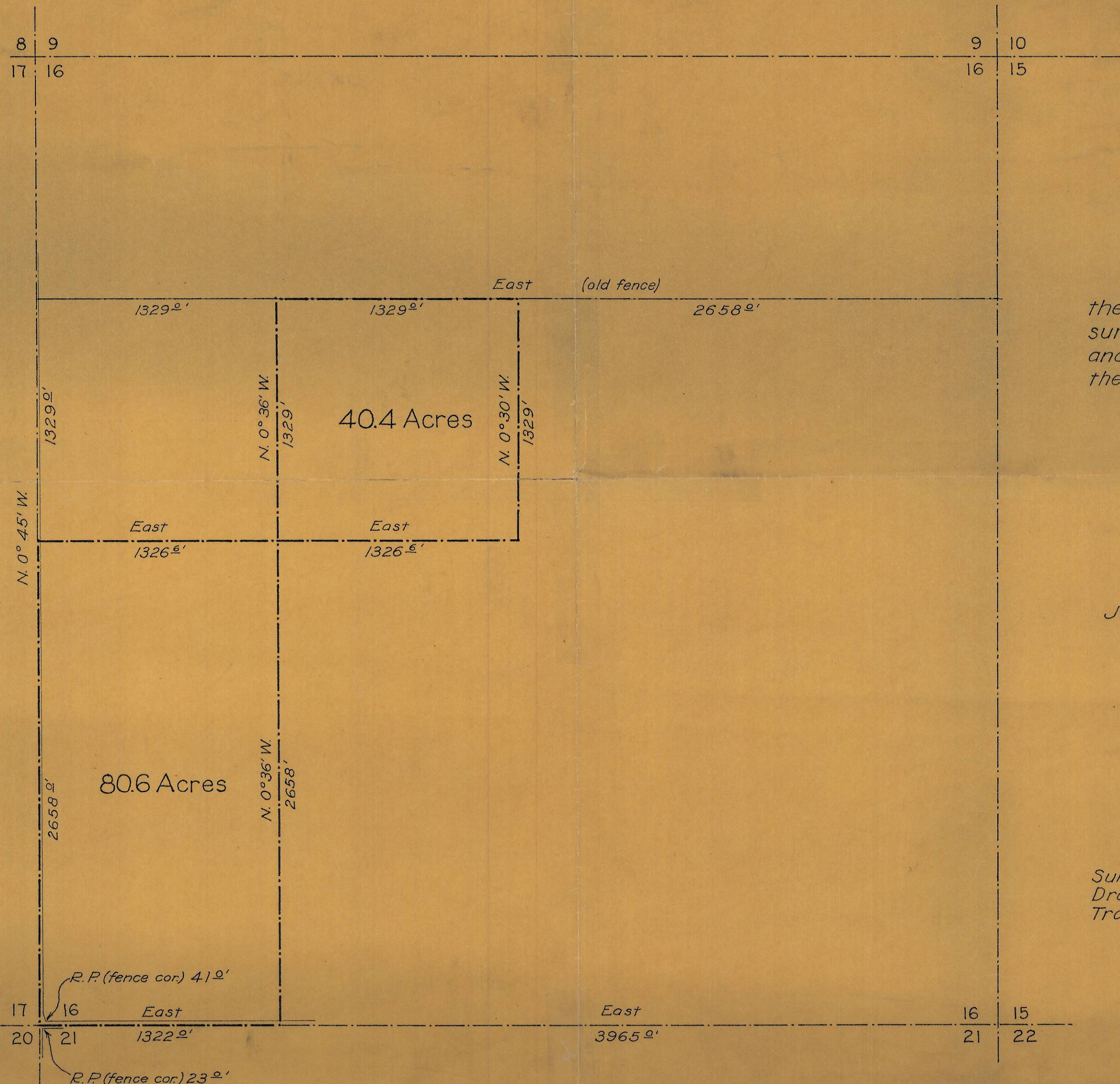


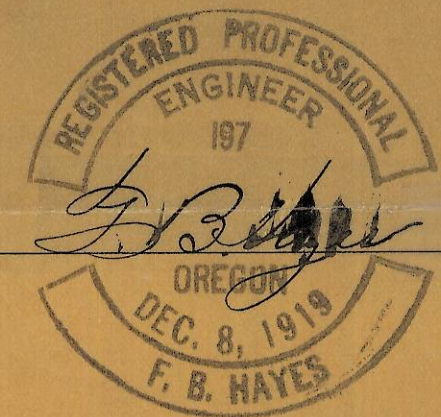
— PARTIAL SURVEY —

SECTION 16 TOWNSHIP 3 N. RANGE 34 EAST WILL. MER.



I hereby certify that, to the best of my knowledge, this survey was correctly executed and this plat was correctly drawn therefrom.

Approved

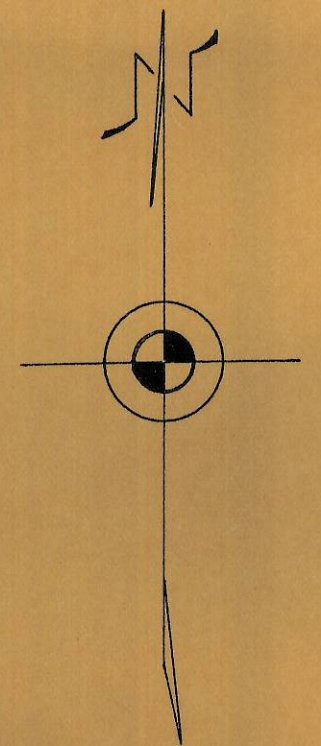


July 8, 1937

F. B. Hayes
Umatilla Co. Surveyor

Scale 1" = 500 ft.

Surveyed by T.B.H.
Drawn by T.B.H.
Traced by T.B.H.



Q-531-A

Q-531-A 77A

Q-531