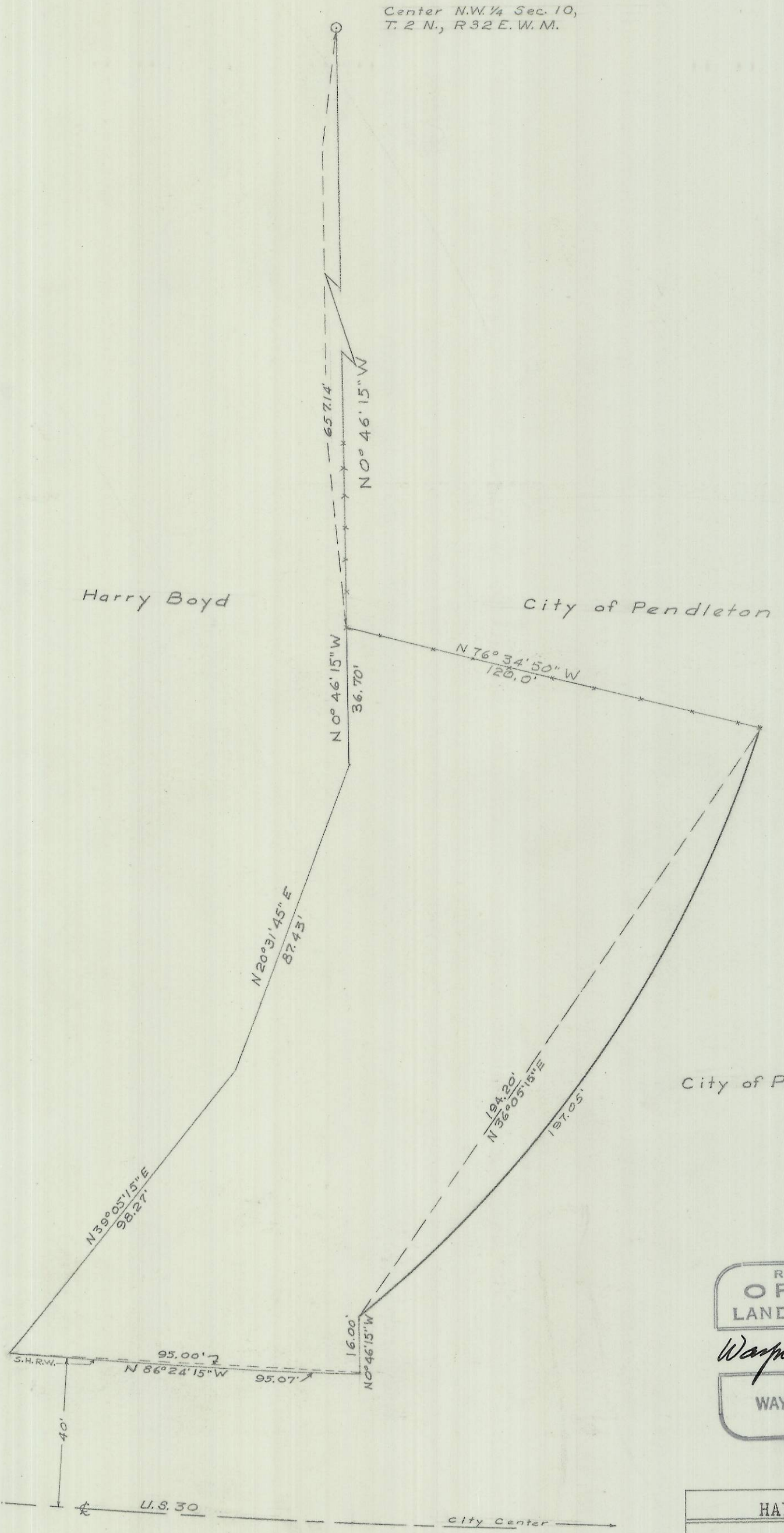


Center N.W. ¼ Sec. 10,
T. 2 N., R. 32 E. W. M.



Harry Boyd

City of Pendleton

City of Pendleton



REGISTERED
OREGON
LAND SURVEYOR

Wayne O. Harris

MAY 6, 1955
WAYNE O. HARRIS
346

Q-298-A

HAYES & HARRIS ENGINEERING

Survey For

HARRY BOYD

Parcel in NW ¼ Sec. 10,

T. 2 N., R. 32 E. W. M.

Scale	Date	Drg. By	Drg. No.
1" - 32'	9-17-56	A.B.Y.	43A-35

Q-298-A