

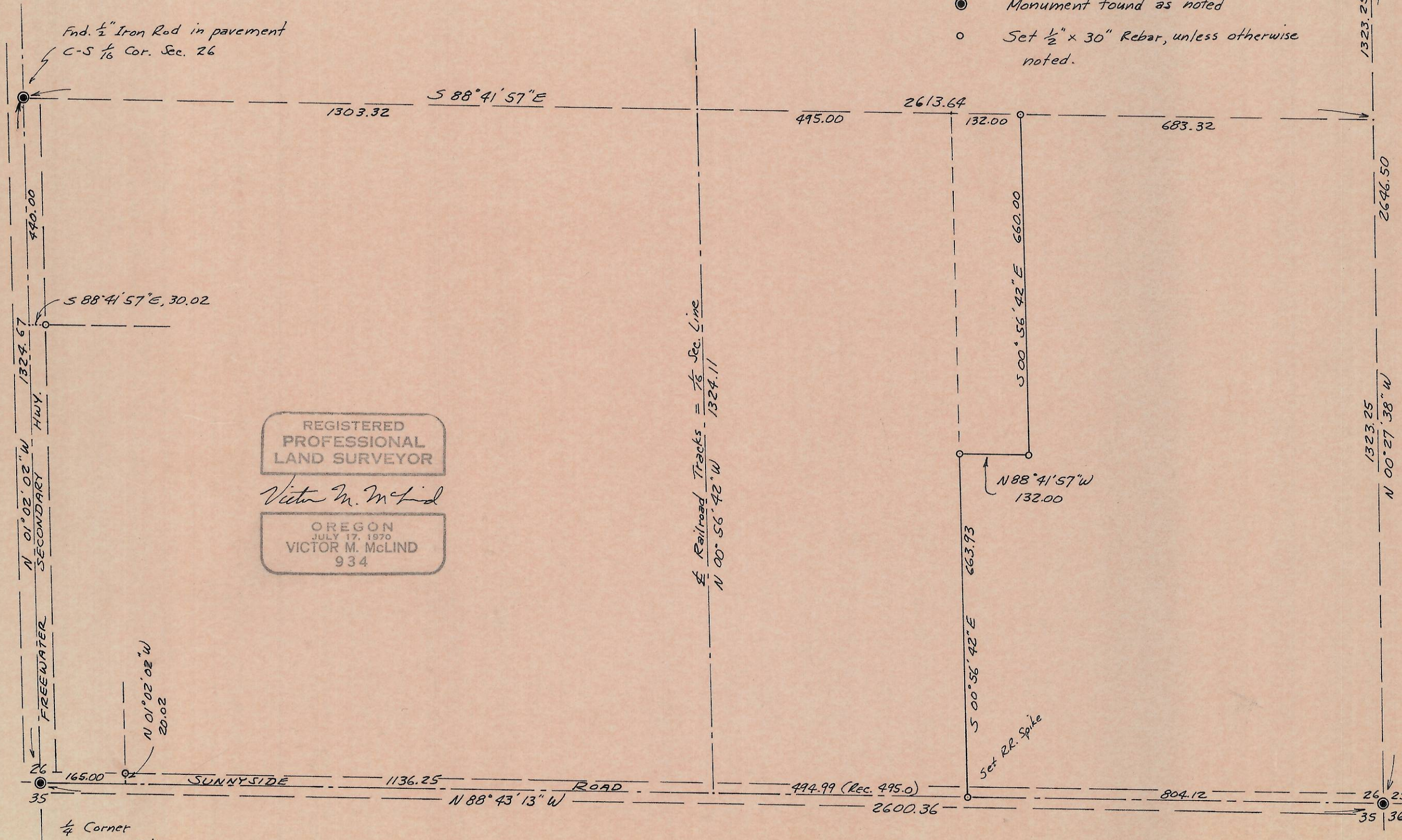
SURVEY TO SET DEED CORNERS
 IN S.E. 1/4 SEC. 26, T.6 N., R.35 E. W.M., UMATILLA CO., ORE.
 Surveyed for Aaron Weis by Victor M. McLind

JUNE, 1978
 SCALE: 1" = 200'

LEGEND

- Monument found as noted
- Set 1/2" x 30" Rebar, unless otherwise noted.

1/4 Corner
 Fnd. Stone
 6" x 7" x 20" high
 1/4" Chisled on S. face
 18" below pavement.
 Set 3/4" Rod over stone
 flush with pavement.



REGISTERED
 PROFESSIONAL
 LAND SURVEYOR
 Victor M. McLind
 OREGON
 JULY 17, 1970
 VICTOR M. McLIND
 934

Note: Bearings are based on the \pm of State Hwy. No. 11,
 $N 00^{\circ} 23' 00'' W$, as per State Hwy Map.

A P-28 P-28-A