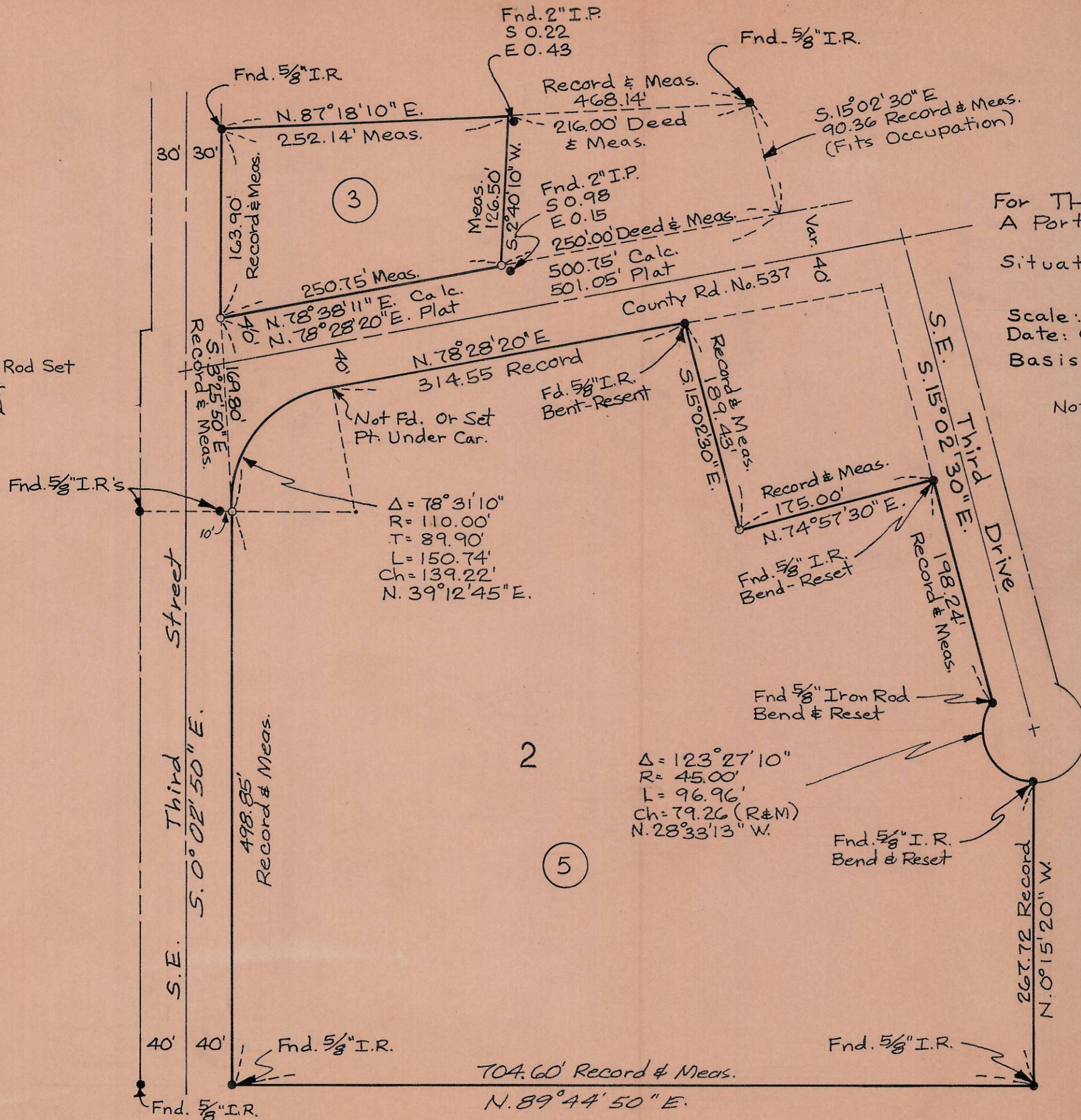




Legend:
 ○ - Denotes 5/8" x 30" Iron Rod Set
 ● - Denotes Monument Found as Indicated



Record of Survey
 For THUNDERBIRD RED LION MOTOR INNS
 A Portion of Block 3, & Lot 2 Block 5
 "REES ADDITION"
 Situated in the S 1/2, Section 11, T.2N., R.32E., W.M.
 UMATILLA COUNTY, ORE.

Scale: 1" = 100'
 Date: 6-22-77

Dwn By: JFC
 Job No. 703-344

Basis of Bearings: Plat of "Rees Addition"

Notes:

All Distances and Bearings Shown are Record. Monuments Were Found and Verified as Indicated. Missing Monuments Were Reset by Holding Distances.

Block 3 Closure, N 1.46, E 0.00
 Lot 2, Block 5 Closure, N 0.17, E 0.19



REGISTERED
 PROFESSIONAL
 LAND SURVEYOR

John W. Hawthorne

OREGON
 JOHN W. HAWTHORNE
 JULY 22, 1974
 1009

N-9-A