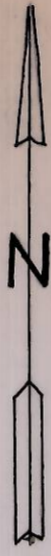


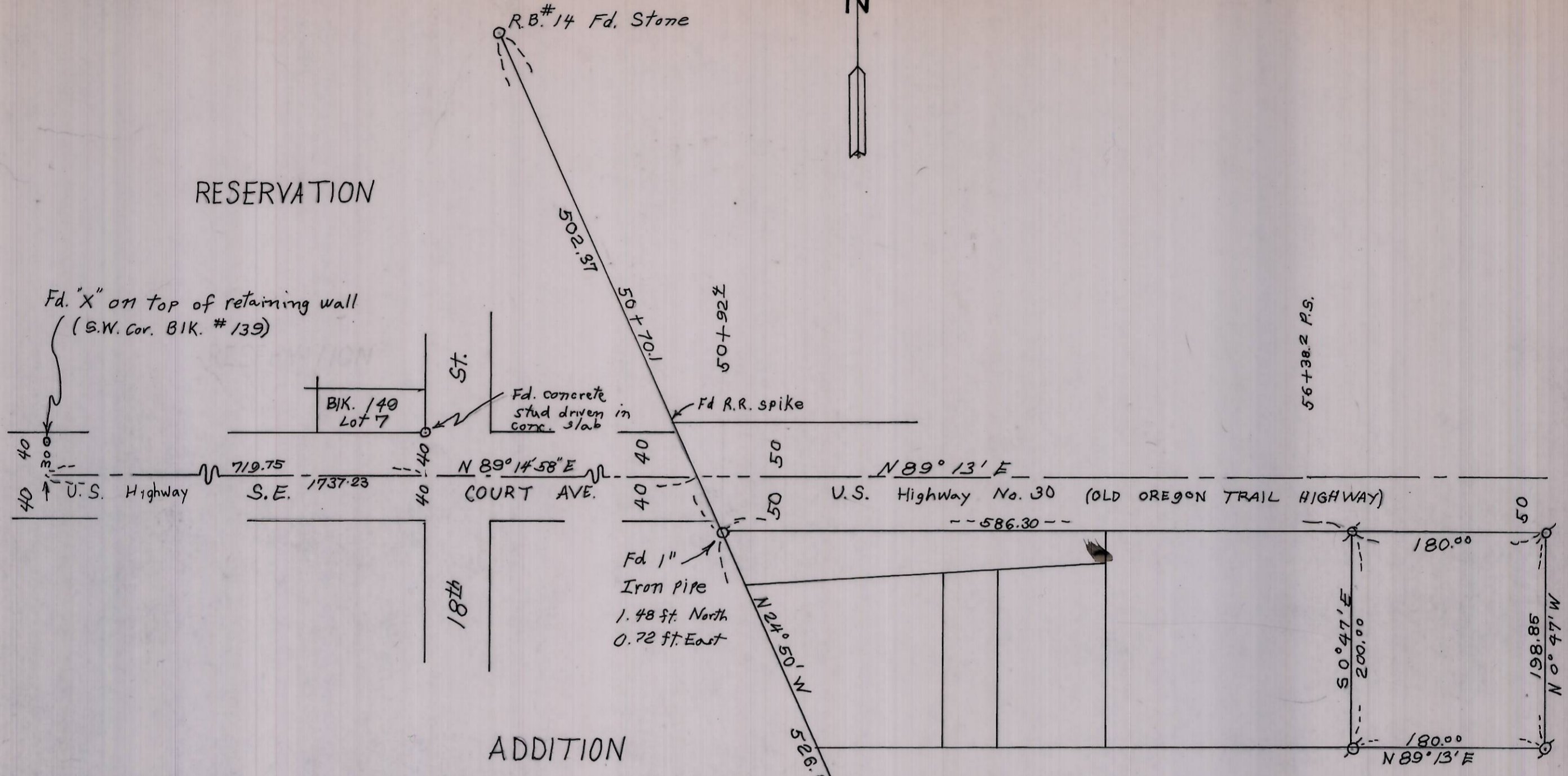
AM-65



RESERVATION

R.B.#14 Fd. Stone

Fd. "X" on top of retaining wall
(S.W. Cor. BIK. #139)



ADDITION

NOTE: BEARINGS ARE BASED ON THE ORIGINAL BEARING OF THE LINE FROM R.B.#13 TO R.B.#14.
 INTERSECTING POINT OF CENTER LINE OF OLD OREGON TRAIL HIGHWAY WITH EAST BOUNDARY OF RESERVATION ADDITION IS BASED ON CENTER LINE ALIGNMENT FROM "X" ON TOP OF RETAINING WALL SET BY WAYNE HARRIS (S.W. COR. BIK. 139) AND CONCRETE STUD DRIVEN IN CONCRETE SLAB 10 FEET NORTHERLY S.E. COR. LOT 7, BIK. 149 OF RESERVATION ADDITION.
 THIS SYMBOL DENOTES 1/2" IRON ROD SET

REGISTERED
 PROFESSIONAL
 LANDSURVEYOR
 W. O. Harris
 OREGON
 MAY 4, 1955
 WAYNE O. HARRIS
 346

SURVEY FOR: ARBON J. BOOKER		WAYNE HARRIS CO. INC.	
Location: NW 1/4, NW 1/4, Sec. 12, T2N, R32E, W.M. Umatilla County, Oregon		ENGINEERS-SURVEYORS PENDLETON, ORE.	
SCALE	DATE	DWN.	CHK.
1"=100'	7-13-77	T.W.R.S.	wch
DWG. NO.		77-403A	

AM-65

M-65-A