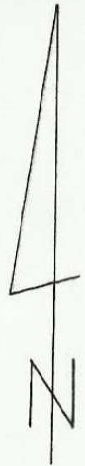
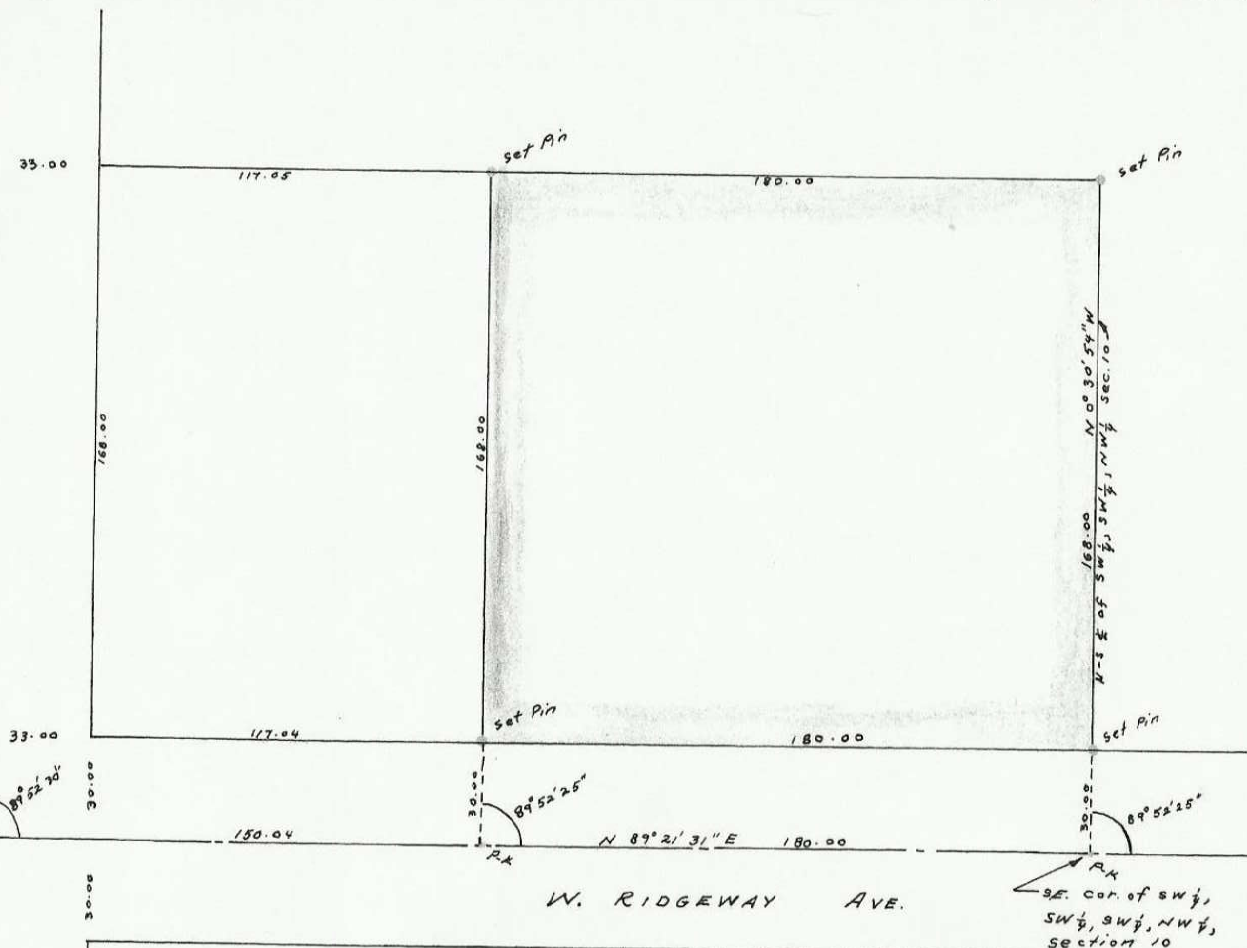


W. 11th ST. (BUTTERCREEKY HWY)

1/2" Pin N 1/4 Cor.
Sec. 10, T4N, R28E

Sec. Line Z
N 0° 30' 59" W

SECTION 10, T4N, R28E, W.M.



SCALE: 1" = 40'
DATE: OCT. 22, 1976

W. RIDGEWAY AVE.

5/8" Pin
center of Sec. 10
T4N, R28E.

SE. cor. of SW 1/4,
SW 1/4, SW 1/4, NW 1/4,
Section 10

GRID BEARINGS & TRUE DISTANCES
(HERM. BUTTE - HERM AIRS)
S 5° 58' 39" E GRID



NORPA DEVELOPMENT INC.
P.O. Box 126 HERMISTON, OREGON. 97838
LAND SURVEY FOR CLARENCE A. GRAHAM
OF HERMISTON, OREGON
IN THE SW 1/4, SW 1/4, SW 1/4, NW 1/4, Sec. 10, T4N, R28E

--	--	--	--	--

JO-76-000

1-81-A