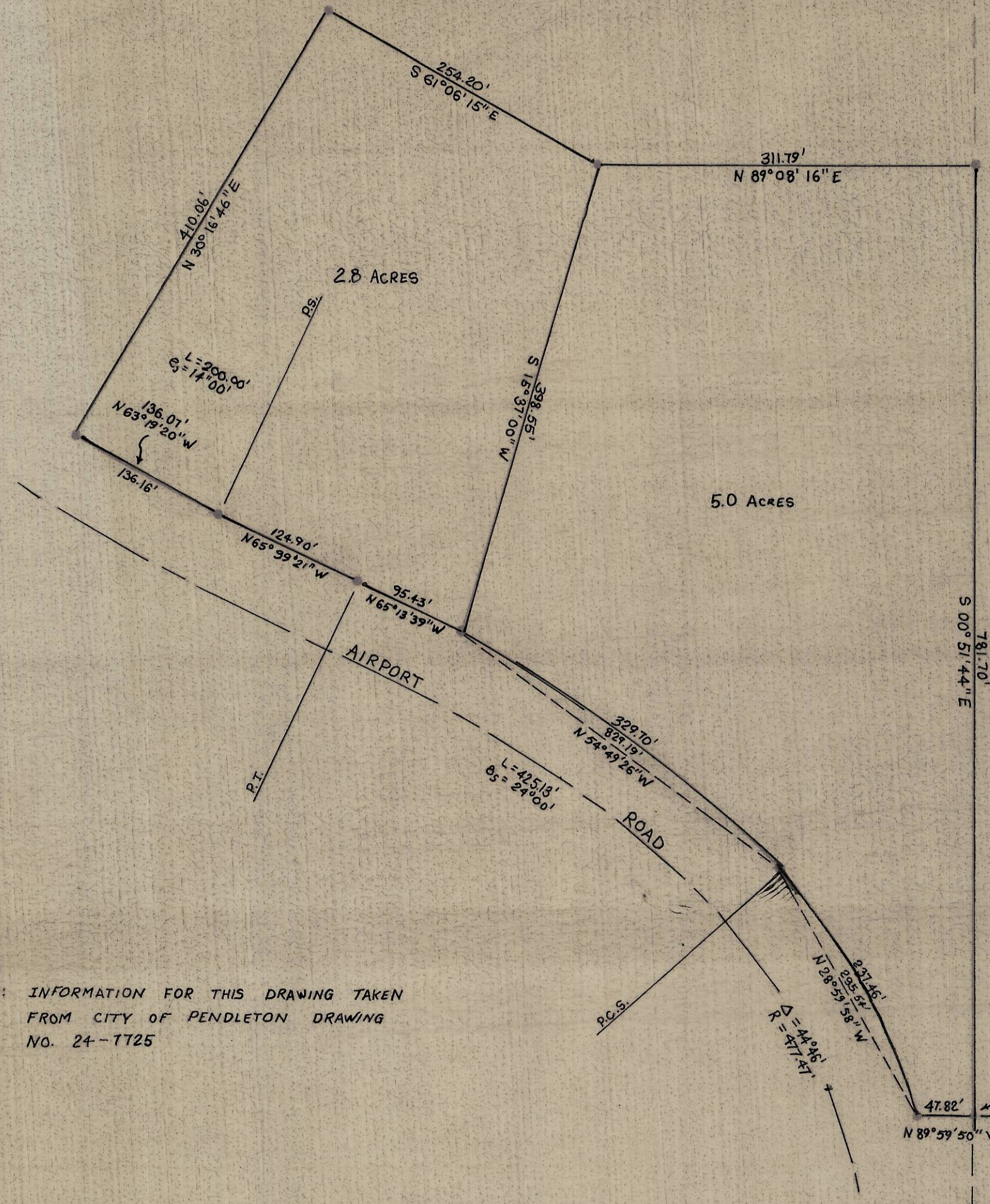


L-43-A



NOTE: INFORMATION FOR THIS DRAWING TAKEN FROM CITY OF PENDLETON DRAWING NO. 24-7725

CTR SEC 5, T2N, R32E, W.M.

L-43-A

REGISTERED PROFESSIONAL LAND SURVEYOR
David H. Krumbein
 OREGON
 JULY 17, 1970
 DAVID H. KRUMBEIN
 333

KRUMBEIN ENGINEERING CO. ENGINEERS - SURVEYORS - PLANNERS 216 S.E. 1st, Pendleton, Oregon	SCALE 1" = 100'
	DATE 6-9-76
	DRN. BY RJP
	CKD. BY
RODEN Airport Property	
	DRNG. NO. 76-278

Sec. 5, 20 R-32 EWM.