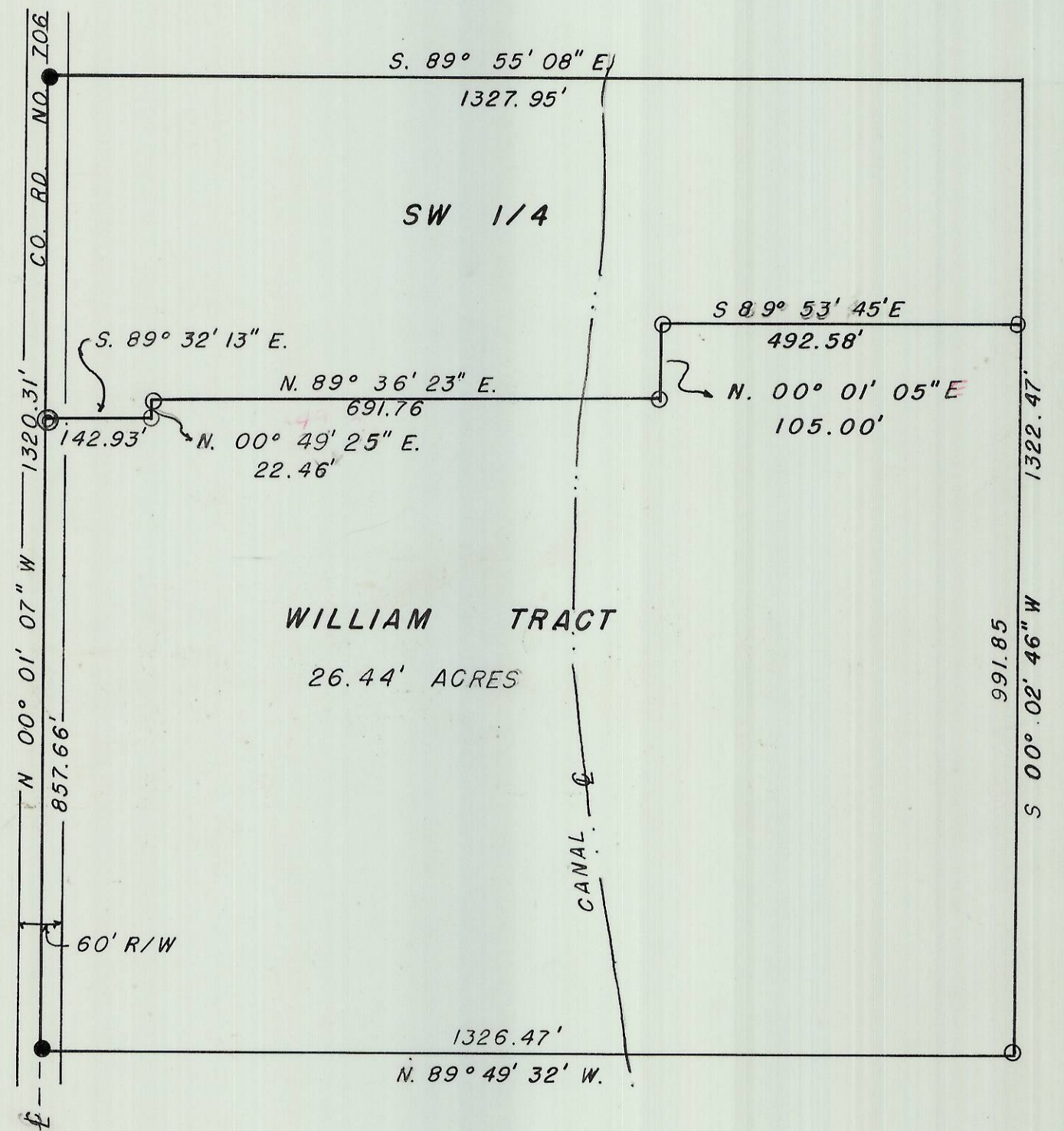


NOTE

Bearing based on tie to U.S.G.S. STATION "UMATILLA". ALL Bearing and Distance shown are true. For computed corner see BENSEL drawing NO. 72-311-C done by this firm.

REGISTERED
PROFESSIONAL
LAND SURVEYOR

David H. Krumbein
OREGON
JULY 17, 1970
DAVID H. KRUMBEIN
933



LEGEND

- FND 1" PIPE
- SET 5/8 I. PIN
- ⊙ SET R.R. SPIKE

J-100-A

SURVEY FOR
WILLIAMS
PARCEL IN SW 1/4 of NE 1/4
SEC. 28 T 5 N., R. 28 E. W. M.

WAYNE HARRIS CO. INC.
ENGINEERS-SURVEYORS PENDLETON OREGON

SCALE	1"=200'	DRN BY	Z/A	DRNG NO
DATE	3-24-75	CKD BY	OKK	75-315 A