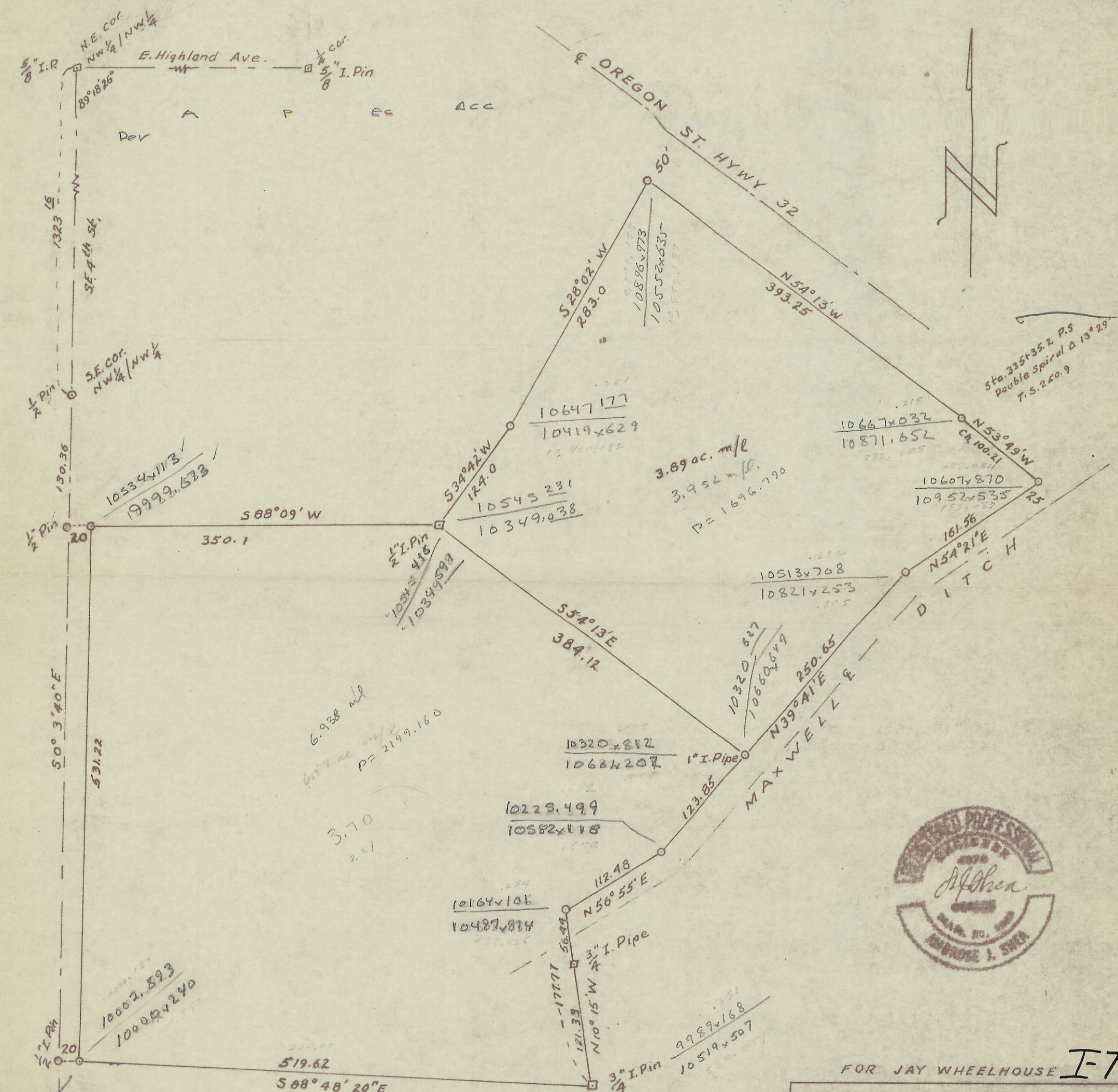


I-79-A



LEGEND
 □ POINTS FOUND AS NOTED
 ○ 1/2" x 24" IRON PINS SET
 BEARINGS BASED ON ASSESSORS
 MAP OF THIS AREA 4N 28 14

FOR JAY WHEELHOUSE I-79
 PLAT OF SURVEY
 IN N.W. 1/4 SEC. 14, T4N, R28E, WM.
 UMATILLA CO. ORE.
 SCALE 1" = 100' 2/5/74

Original 4N2814BB