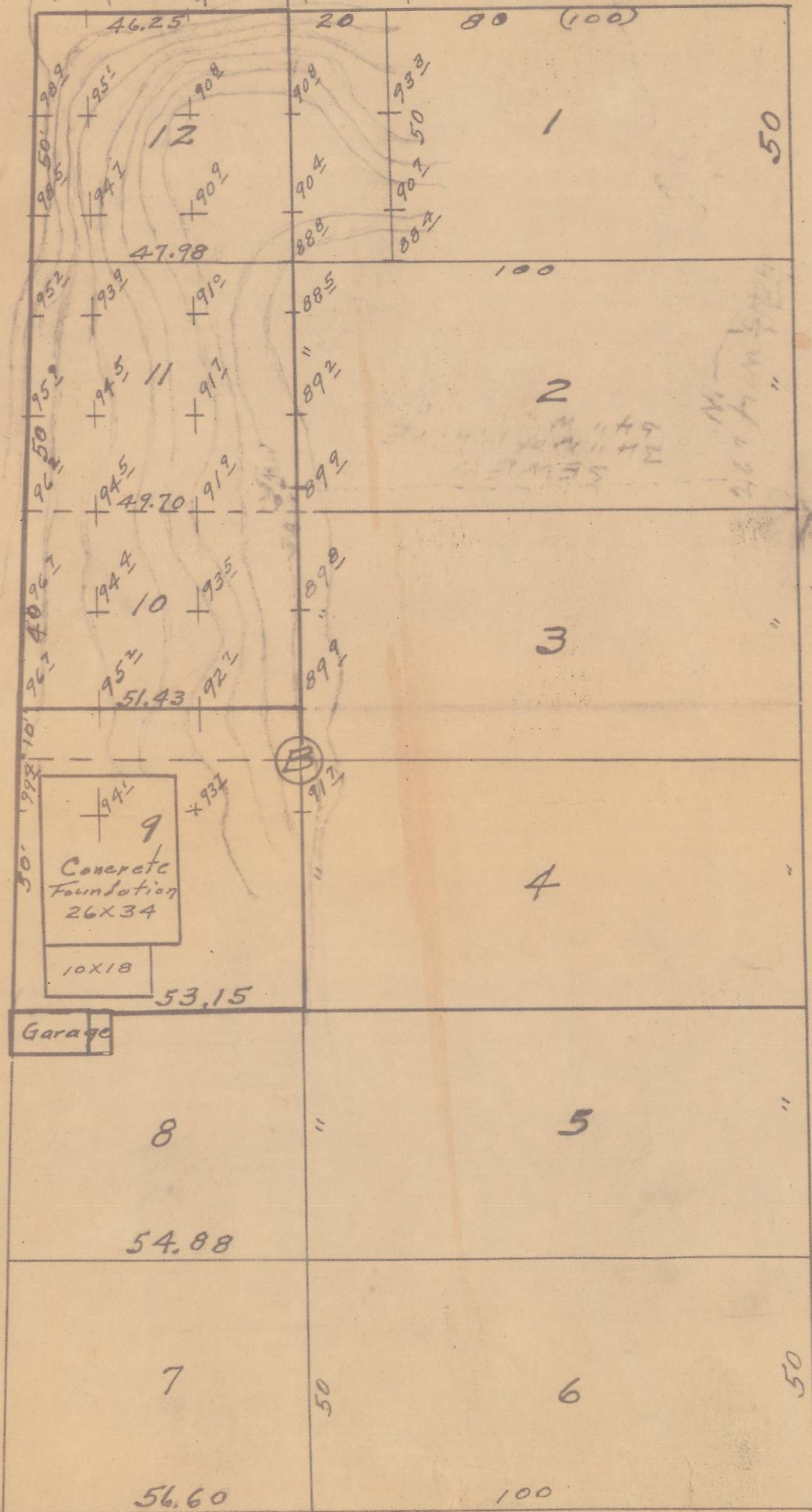


Furnish Ave.  
curb

N.W. 10th

N.W. 9th St.

Fellis Ave.



RECEIVED BY

Umatilla County Surveyor

Date: 2/21/13

Rec'd By: *D. J. J...*

No.: 13-096-A

Plat of  
Block "B" of Livermore's  
Addition to City of Pendleton  
Showing J.I. Howard, Ownership  
Scale 1 inch = 30 Feet.  
Surveyed and platted Apr. 1947  
By W.E.O. Criger.

2N 32 03C S 1/2