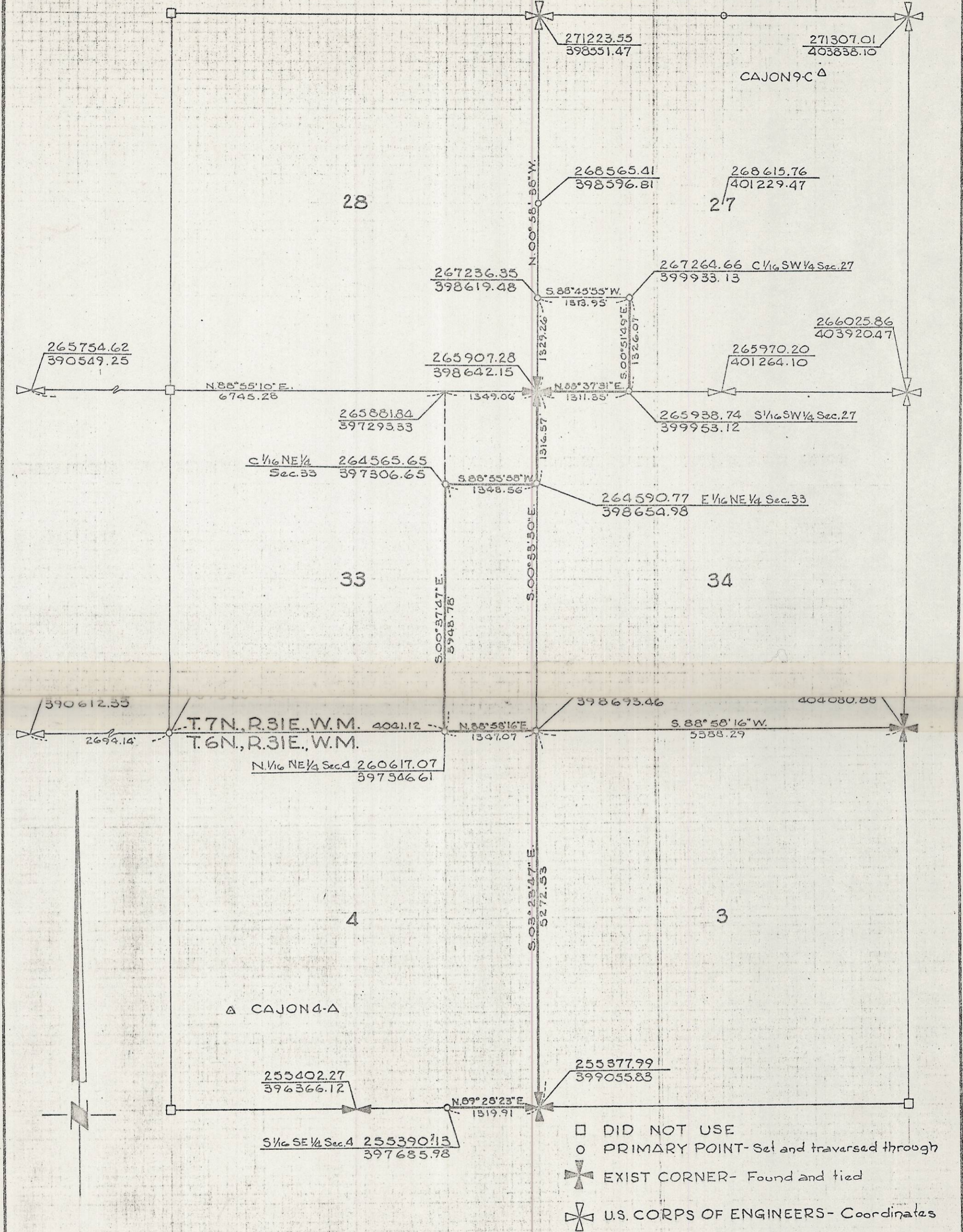


PARTIAL BOUNDARY SEGMENT DD



- DID NOT USE
- PRIMARY POINT- Set and traversed through
- ✚ EXIST CORNER- Found and tied
- ✚ U.S. CORPS OF ENGINEERS- Coordinates

RECEIVED BY
 Date 2/6/2013
 Rec'd S. Rex
 No. 13-030-A

ROGERS SURVEYING INC. P.S.
 PROFESSIONAL LAND SURVEYORS
 P.O. Box 507
 Richland, Washington
 Phone (509) 943-3151

CLIENT U.S. CORPS OF ENGINEERS
 PROJECT HORIZONTAL CONTROL
 DRN. BY DLM/GCW
 SCALE NTS
 DATE Aug. 29, 1973
 SHEET 1 of 1