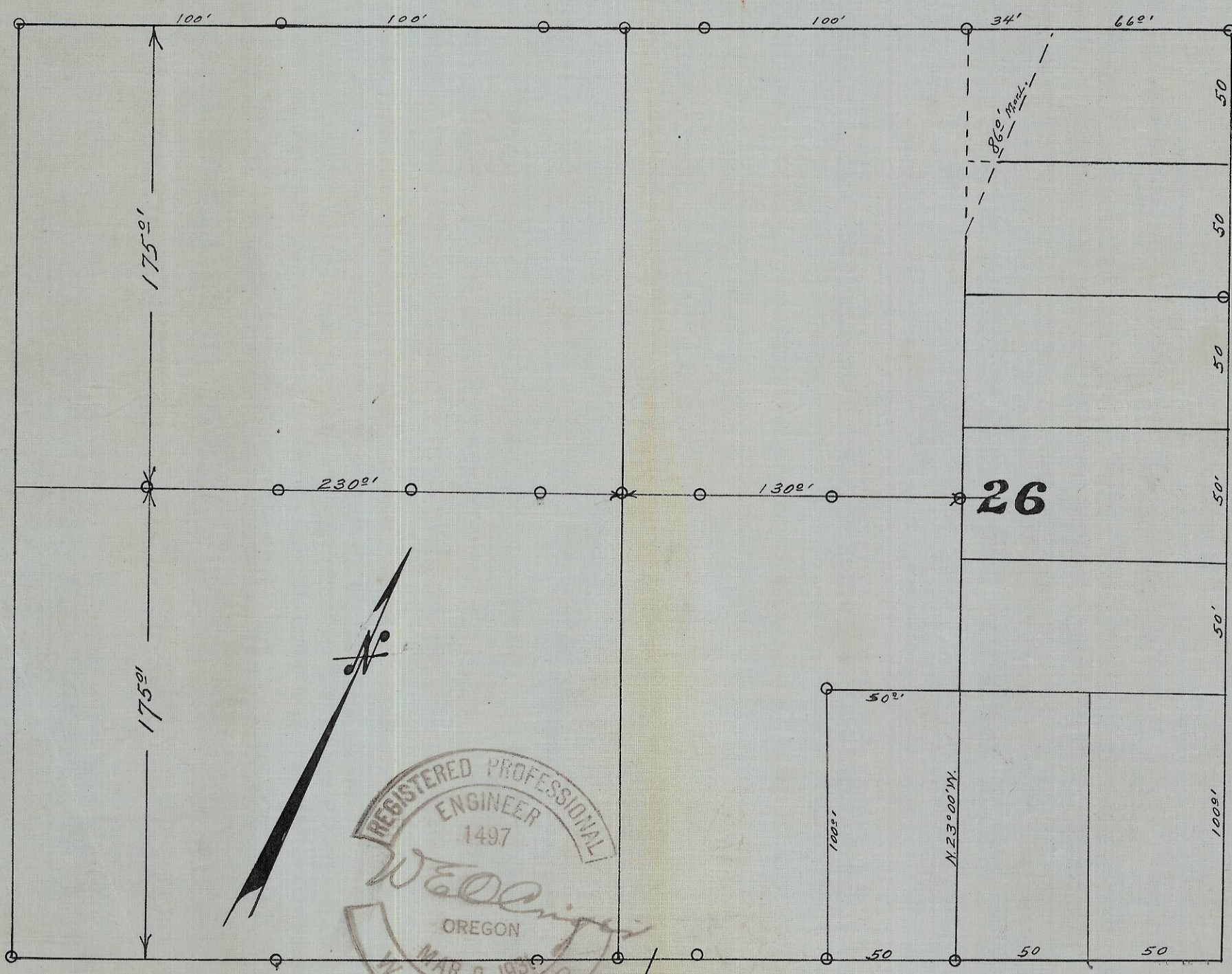


Plat Showing Lots 1 & 2 in
 Block 26 of Arnold & Railey's
 Addition, City of Pendleton, Ore. Dec. 10-1934.
 Also Fraction Lying Just West of
 and Joining Same.
 Scale 50 Ft. to 1 inch. West Court Street.



Matlock Street.



West Alta Street.

06-159-A

A-48-617-T
 2N32 10 BD