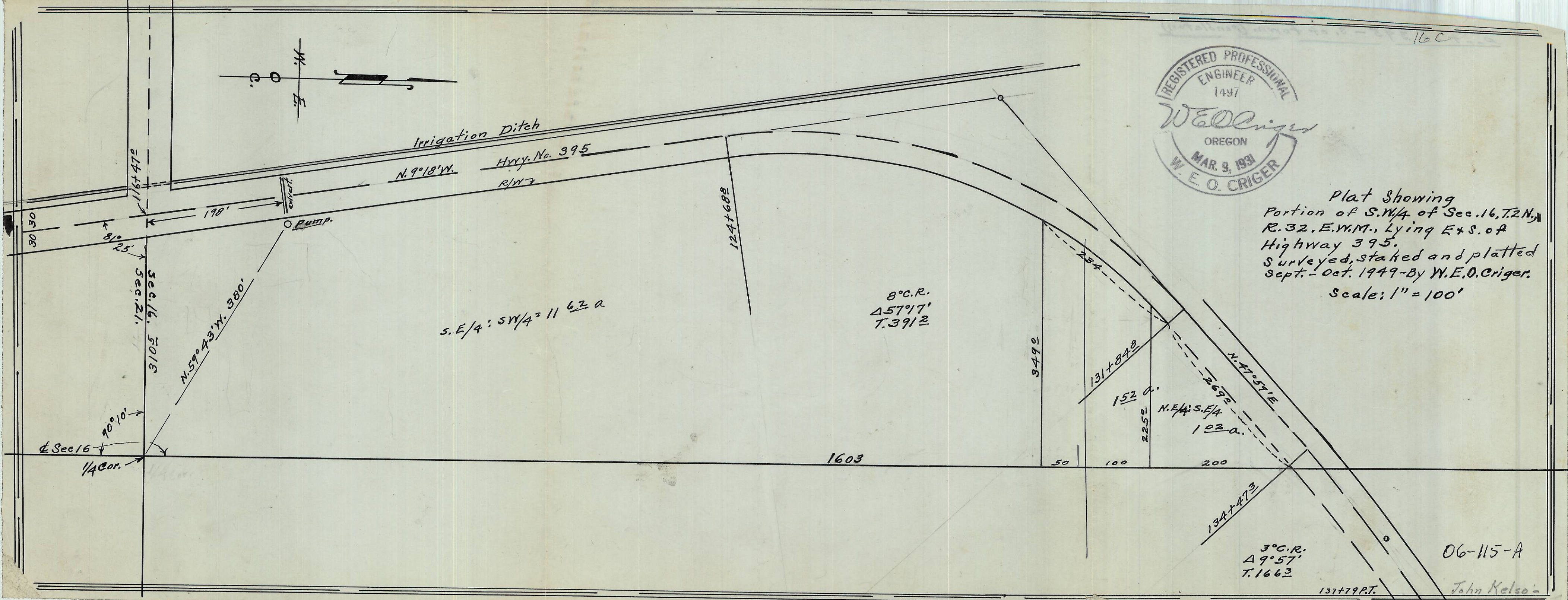


Plat Showing  
Portion of S.W. 1/4 of Sec. 16, T. 2 N.,  
R. 32, E. W. M., Lying E + S. of  
Highway 395.  
Surveyed, staked and platted  
Sept. - Oct. 1949 - By W. E. O. Criger.  
Scale: 1" = 100'



30 30  
81° 25'  
166+472  
116+111  
198'  
Culvert  
Pump  
N. 59° 43' W. 380'  
90° 10'  
Sec 16  
1/4 Cor.

Sec. 16, T. 2 N.,  
R. 32, E. W. M.  
3105

S. E. 1/4 : SW/4 = 11 62 a

8° C. R.  
Δ 57° 17'  
T. 3912

1603

3490

131+848

152 a.

N. E. 1/4 S. E. 1/4

102 a.

2252

N. 47° 57' E  
2692

134+473

3° C. R.  
Δ 9° 57'  
T. 1663

137+79 P.T.

06-115-A

John Kelso