

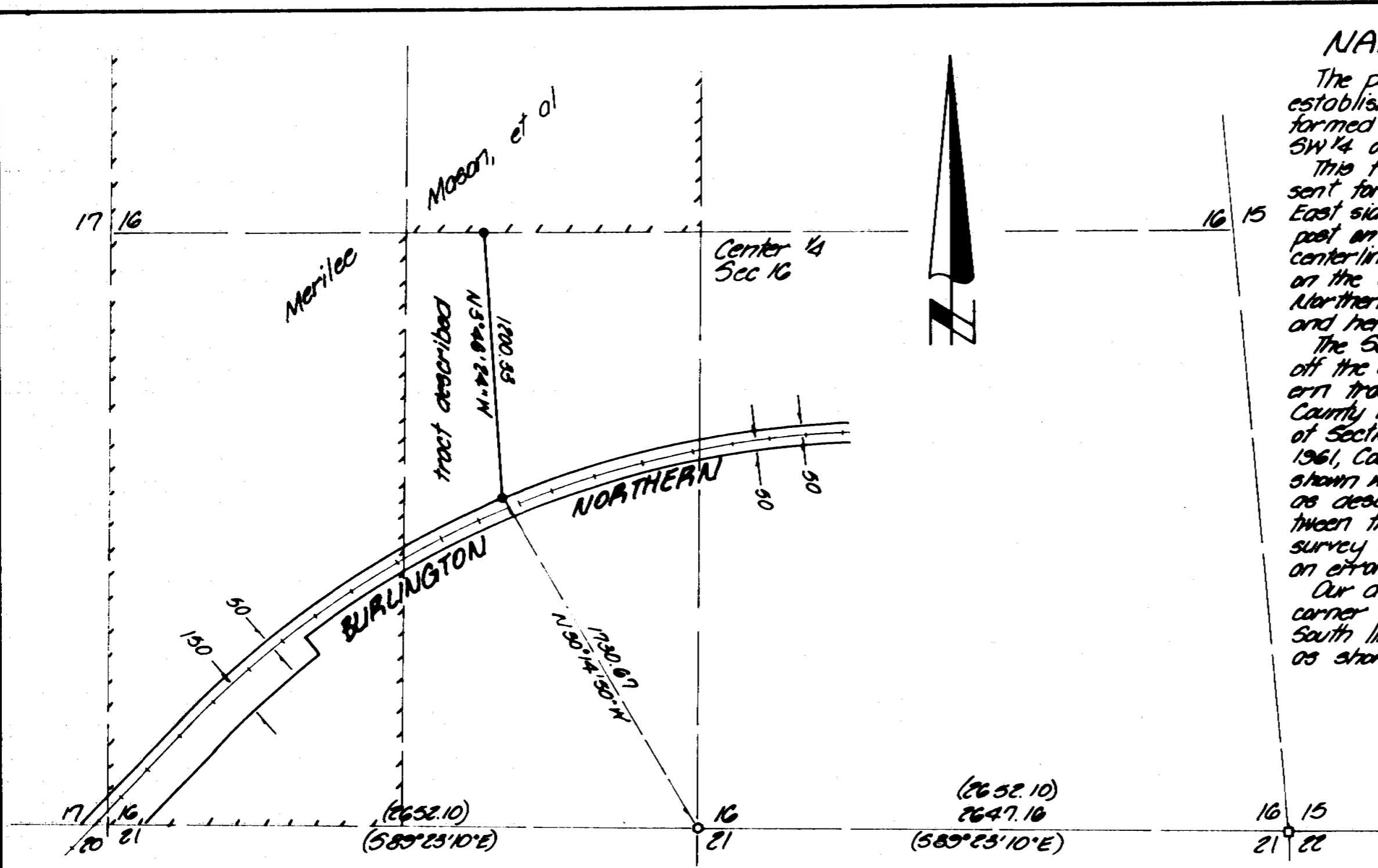
**NARRATIVE:**

The purpose of this survey was to establish the East line of the field being formed by Merilee Mason et al, in the SW 1/4 of Section 16, T5N, R34E, W.M.

This field has been farmed in its present form for a number of years and the East side of the field is marked by a post on the North end, near the East-West centerline of the section and by a post on the South end near the Burlington Northern tracks. These posts were tied and held for the East line of the field.

The South edge of the field is 50 feet off the centerline of the Burlington Northern tracks as shown on the map in the County Assessor's office. The South line of Section 16 had been surveyed in 1961, County Surveyor No. G-783-C. As shown we found the S 1/4 and SE 1/4 as described, however the distance between the corners do not match the 1961 survey by 4.94 feet. This appears to be an error in the 1961 survey of 5.00 feet.

Our description ties to the found S 1/4 corner and bearings are based on the South line of the section being S89°25'10"E as shown on the 1961 survey.



MASON, MERILEE

- denotes find RR iron, Co No. G-783-C
- denotes find axle w/gear, Co No. G-783-C
- ( ) denotes bearing and distance, Co No. G-783-C
- denotes find post, set 3/8" x 30" iron pin with aluminum cap stamped PLS 933 on line, nearby post

<b>KRUMBEIN ENGINEERING LTD.</b> ENGINEERS - SURVEYORS - PLANNERS 361 S.E. Johnson Boulevard, Oregon	Scale 1" = 500'	Drawn By MLD	Orig. No. 86-028	Revision 1
	Date 1-7-86	Check By DHM	Job No. 85-162	Revision 2

Survey for  
**MERILEE MASON**

SW 1/4, Sec. 16, T5N, R34E, W.M.

REGISTERED  
PROFESSIONAL  
LAND SURVEYOR

OREGON  
JULY 17, 1957  
DAVID H. KRUMBEIN

RECEIVED BY  
Umatilla County Surveyor

Date 9-87

Rec'd By KA

No. 87-51-A

87-51-A