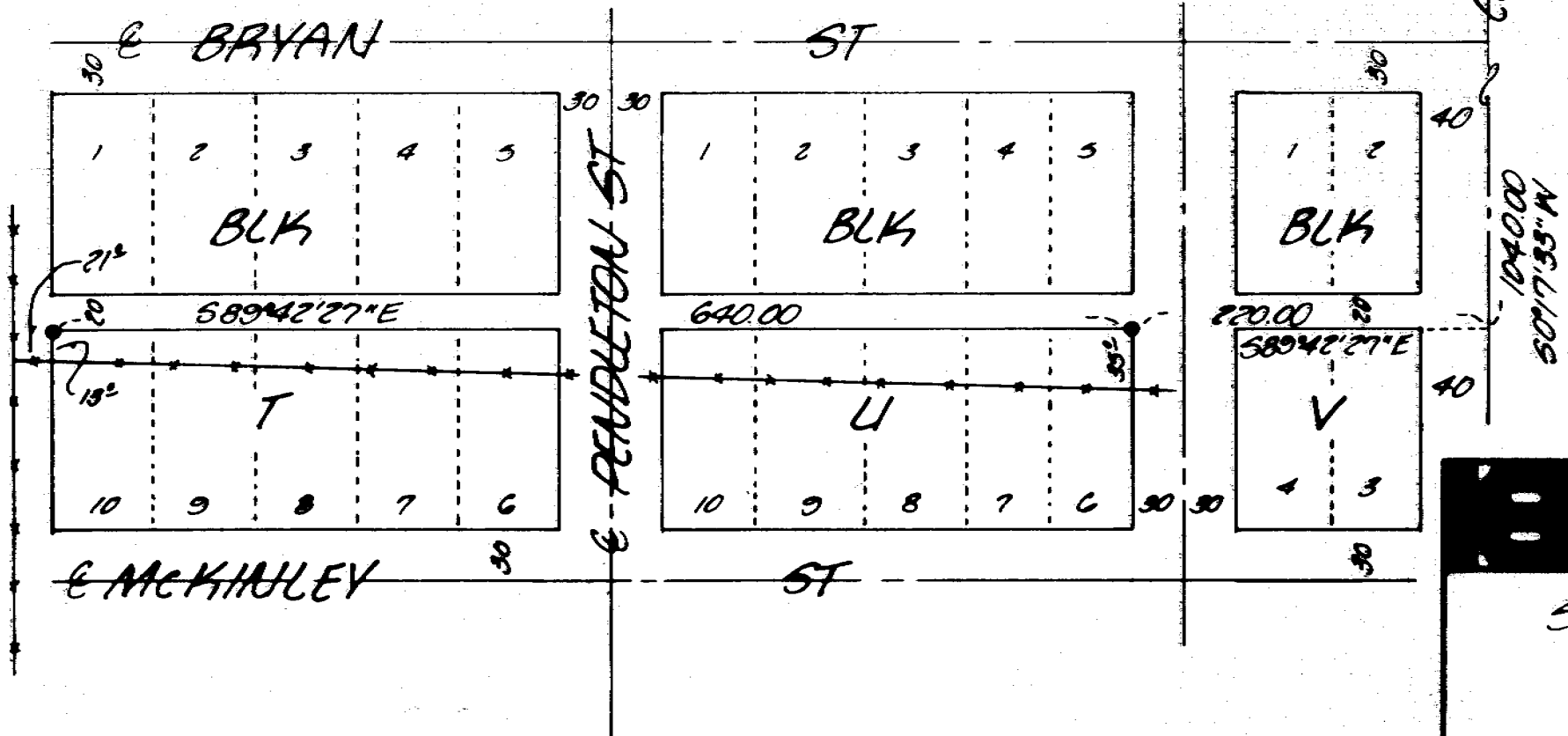


### NARRATIVE

The purpose of this survey was to establish the Northeast corner of Lot 6, Block U and the Northwest corner of Lot 10, Block T of the First Addition to the City of Ukiah. Control from monuments shown as found were set by Anderson-Perry, County Surveyor Dwg. No. O-2-C. Plot distances and bearings are from No. O-2-C.

- denotes set  $\frac{3}{8}$ " x 30" iron pin with aluminum cap stamped PLS 953
- denotes find  $\frac{3}{8}$ " iron pin in concrete, Co Surveyor No. O-2-C, with plastic cap
- ⊙ denotes find 2" pipe with Brass Cap in concrete, Co Surveyor No. O-2-C



<b>KRUMBEIN ENGINEERING LTD.</b> ENGINEERS - SURVEYORS - PLANNERS 391 S.E. Second Pendleton, Oregon	Scale 1"=100'	Des. By MLD	Dwg. No. 86-128	Revision 1
	Date 5-9-86	Chk. By DHK	Job No. 86-42	Revision 2

Survey for <b>PALMER</b>  Lot 10, Blk T and Lot 6, Blk U First Addition, City of Ukiah		<b>RECEIVED BY</b> Umatilla County Surveyor Date <u>6-5-86</u> Rec'd By <u>LA</u> No. <u>86-48-A</u>
--	--	--