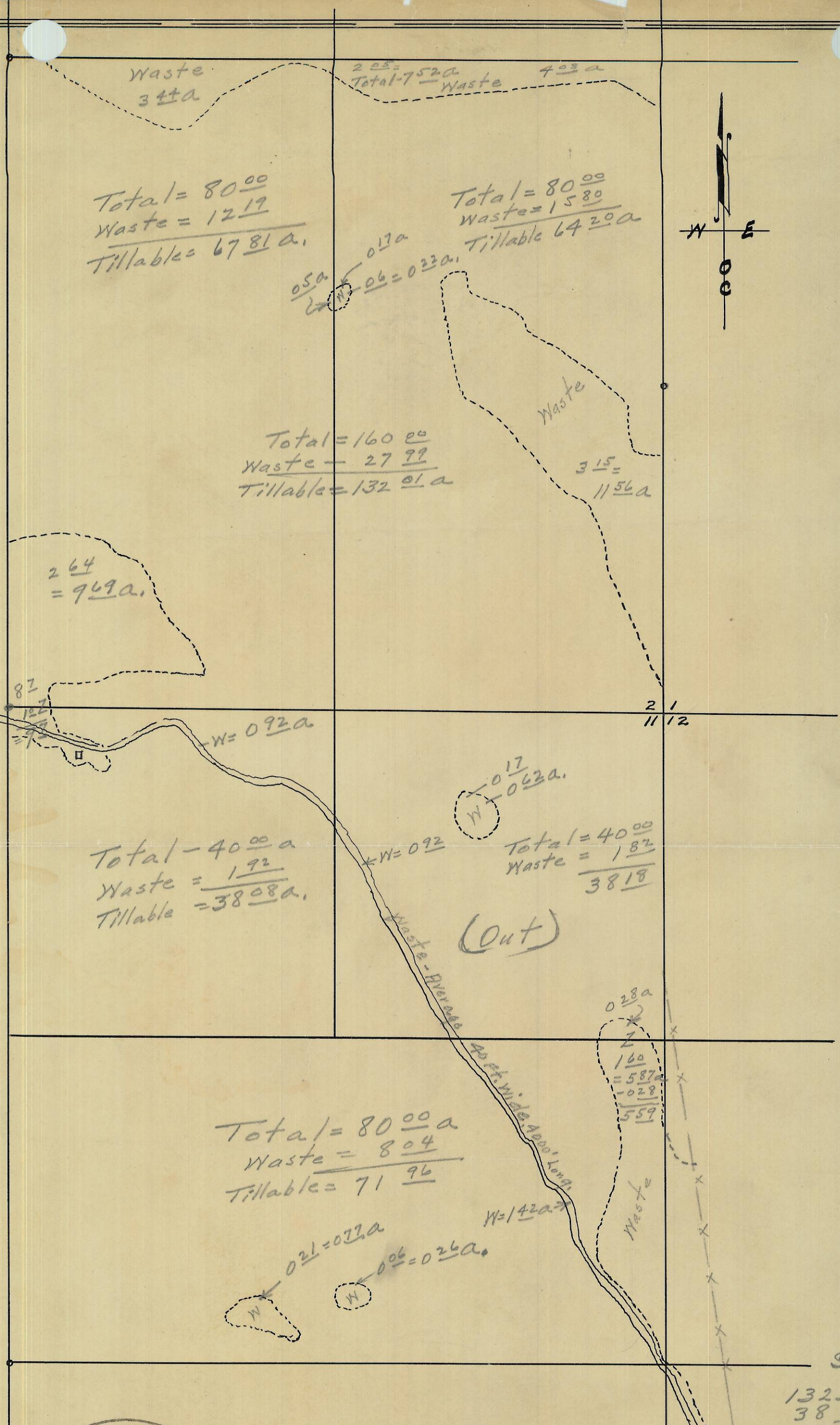


84-8-A

2011 County-Master-Plan

84-8-A



Waste 344a
 Total = 80.00
 Waste = 12.19
 Tillable = 67.81 a.

Total = 80.00
 Waste = 15.80
 Tillable = 64.20 a

Total = 160.00
 Waste = 27.99
 Tillable = 132.01 a

264
 = 969 a.

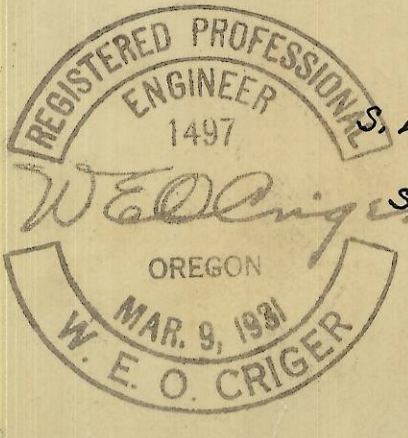
Total = 40.00 a
 Waste = 1.92
 Tillable = 38.08 a.

Total = 40.00
 Waste = 1.82
 38.18

Total = 80.00 a
 Waste = 8.04
 Tillable = 71.96

028a
 2
 160
 = 587a
 - 028
 559

Sum.
 132.01
 38.08
 71.96
 242.05



Plat showing tillable land in
 E/4 Sec. 2 and N.E. 1/4 Sec. 11, T. 2 N., R. 34 E. W.M.
 Umatilla Indian Reservation.
 Scale: 1 inch = 400 Ft.
 surveyed and platted June-1948
 By W. E. O. Criger.

RECEIVED BY
 Umatilla County Surveyor
 Date 6-48
 Rec'd By X.A
 No. 84-8-A



84-8-A
 constant 1" = 363a