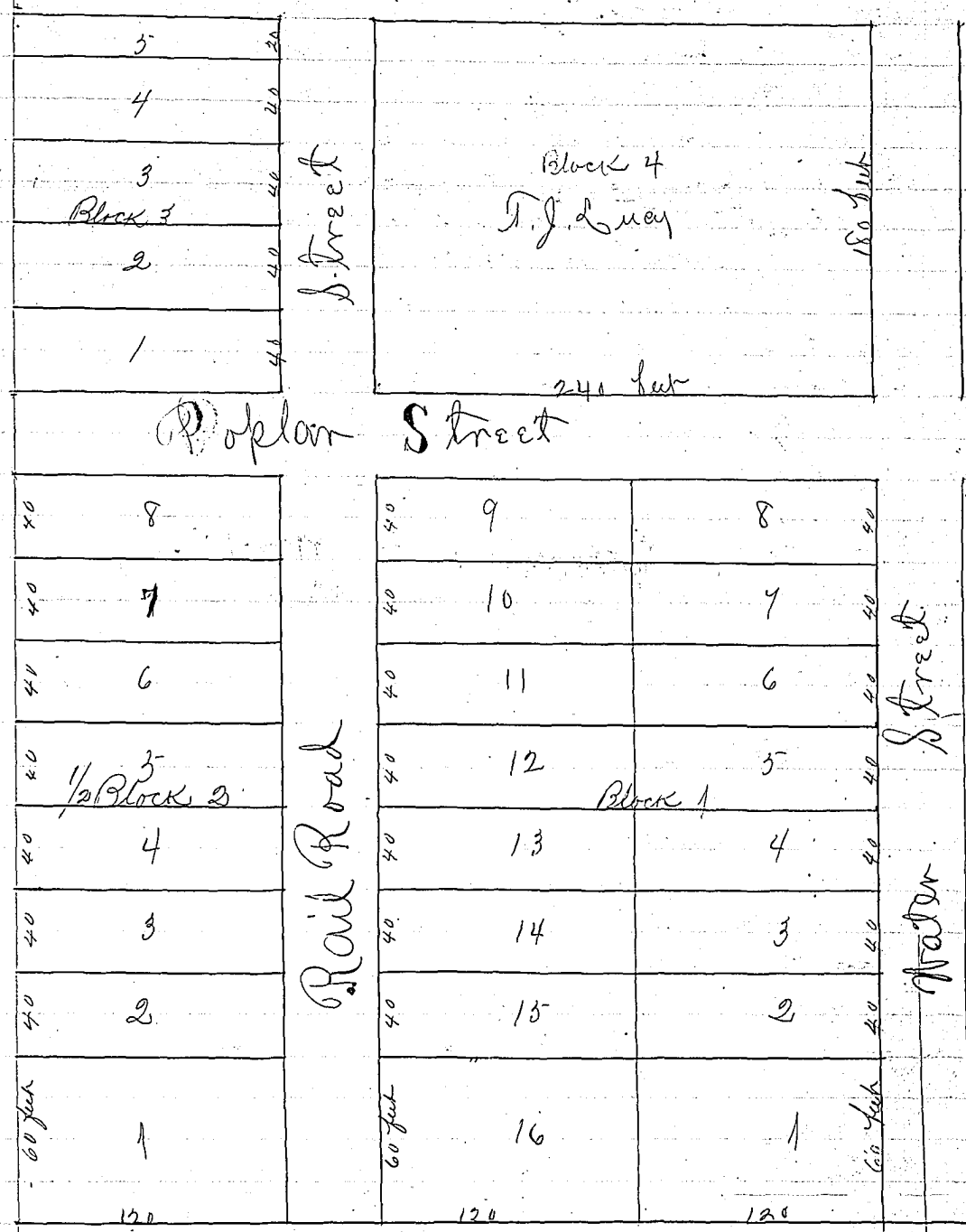


# Mays' Addition to Weston



Mays' Addition Weston is in the  
 NE Quarter of the NW Quarter of Section  
 22 Township Four North Range Thirty  
 Four East of the Willamette Meridian

Surveyed September 28<sup>th</sup> 1875  
 J. L. Moorhouse

Filed Oct 3<sup>rd</sup> 1875 -  
 J. H. Shaw Plat

County Surveyor